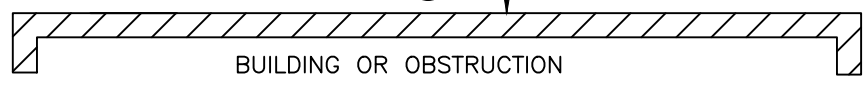
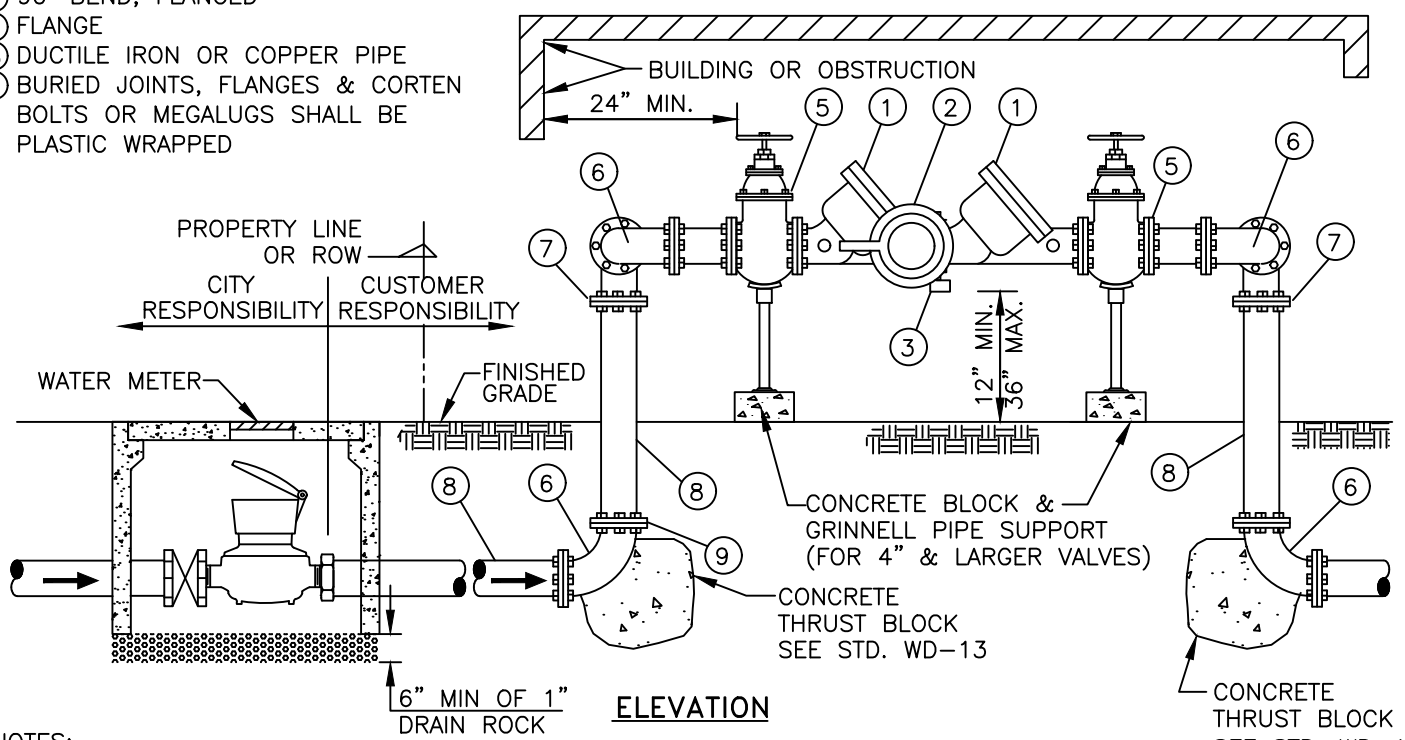


PLAN

- ① CHECK VALVE
- ② PRESSURE REGULATED RELIEF VALVE
- ③ DUMP OUTLET
- ④ TEST COCK WITH CAP, 4 REQUIRED
- ⑤ GATE VALVE OR BALL VALVE
- ⑥ 90° BEND, FLANGED
- ⑦ FLANGE
- ⑧ DUCTILE IRON OR COPPER PIPE
- ⑨ BURIED JOINTS, FLANGES & CORTEN BOLTS OR MEGALUGS SHALL BE PLASTIC WRAPPED



ELEVATION



NOTES:

- 1. PARALLEL RPPA ASSEMBLIES SHALL BE USED IN ALL LOCATIONS WHERE WATER SERVICE CAN NOT BE INTERRUPTED DURING NORMAL WORKING HOURS.
- 2. FOR INSTALLATION AND MATERIAL REQUIREMENTS, REFER TO STD. DETAIL STD. WD-11A.
- 3. ALL DEVICES SHALL BE APPROVED BY THE WATER-GAS-WASTEWATER UTILITIES DEPARTMENT.
- 4. THE DEVICE SHALL BE INSTALLED ON THE OWNER'S PROPERTY, DIRECTLY BEHIND THE CITY-OWNED WATER METER.
- 5. INSPECTION BY UTILITIES INSPECTOR IS REQUIRED FOR SUPPLY PIPE BETWEEN THE METER AND THE VALVES.

BY	DATE	PARALLEL REDUCED PRESSURE PRINCIPLE ASSEMBLY STANDARD DETAIL	APPROVED: MAY 5, 2021	SCALE: NONE
DRAWN	J.J. 02/19		<i>Silvia Santos</i> SILVIA LEE SANTOS ENGINEERING MANAGER	DWG. NO. STD. WD-11B
CHECKED	J.J. 02/20		50674 R.E. NO.	
REVIEWED	R.I. 02/20	CITY OF PALO ALTO, CALIFORNIA	REVISION: MAY 5, 2021	APPENDIX B