

A TEMPORARY RUBBER MEDIAN INSTALLATION DETAIL
SCALE: 1" = 20'

QUANTITY TABLE (STRIPING)

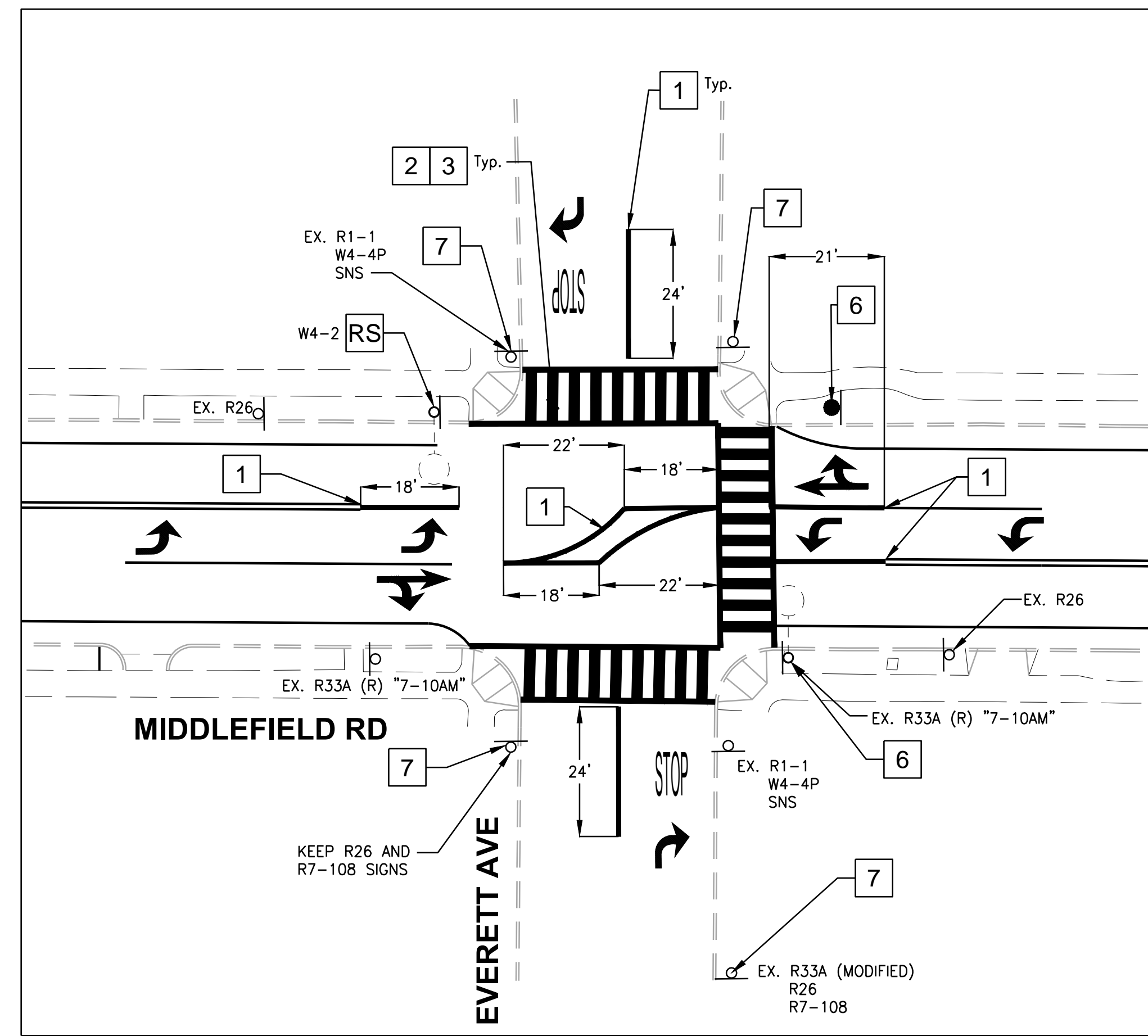
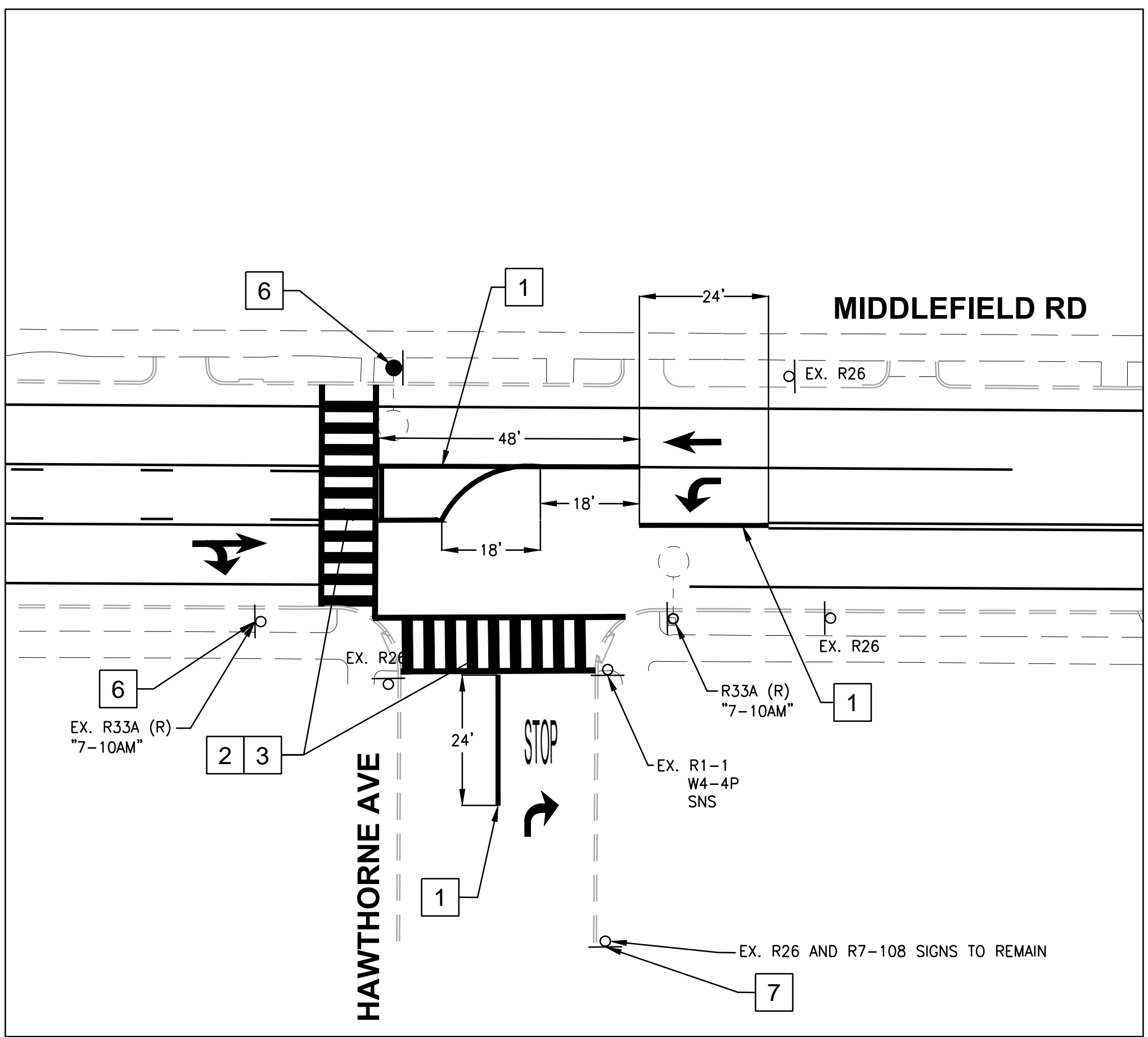
ITEM	INSTALL	INSTALL
DETAIL 10	-	885 ft
DETAIL 21	-	1135 ft
DETAIL 27B	-	2300 ft
DETAIL 28	-	245 ft
DETAIL 31	-	770 ft
DETAIL 37B	-	290 ft
DETAIL 38	-	310 ft
DETAIL 40	-	40 ft
DETAIL 41	-	40 ft
TYPE I 10'-0" ARROW	3	42 sq ft
TYPE IV ARROW (R)	3	45 sq ft
TYPE IV ARROW (L)	15	225 sq ft
TYPE VI ARROW	4	168 sq ft
TYPE VII ARROW (R)	6	162 sq ft
TYPE VII ARROW (L)	1	27 sq ft
WORD MARKING "STOP"	4	88 sq ft
24" WHITE STRIPE	-	850 ft
12" WHITE STRIPE	-	915 ft

B TEMPORARY RUBBER MEDIAN INSTALLATION DETAIL
SCALE: 1" = 20'

- GENERAL NOTE:**
- SIGNING AND STRIPING SHALL CONFORM TO THE CITY OF PALO ALTO REQUIREMENTS, APPLICABLE DETAILS OF THE CALIFORNIA DEPARTMENT OF TRANSPORTATION (CALTRANS) 2015 STANDARD PLANS, STANDARD SPECIFICATIONS, LATEST EDITION OF THE CALIFORNIA MUTCD, SIGN SPECIFICATIONS SHEETS, AND THE SPECIFICATIONS.
 - ALL TRAFFIC STRIPES SHALL BE 3M STAMARK PAVEMENT MARKING TAPE SERIES 380.
 - ALL CROSSWALK PAVEMENT MARKINGS AND STOP BAR STRIPES SHALL BE THERMOPLASTIC. ALL CROSSWALK PAVEMENT MARKINGS AND STOP BAR STRIPES SHALL BE 12" WHITE STRIPES UNLESS OTHERWISE NOTED ON THE PLANS. ALL CROSSWALKS SHALL BE 10' O.C. IN WIDTH.
 - REMOVE ALL EXISTING STRIPING CONFLICTING WITH PROPOSED STRIPING.
 - CONTRACTOR TO PROVIDE SIGN PROOFS FOR ALL PROPOSED SIGNS FOR CITY APPROVAL.

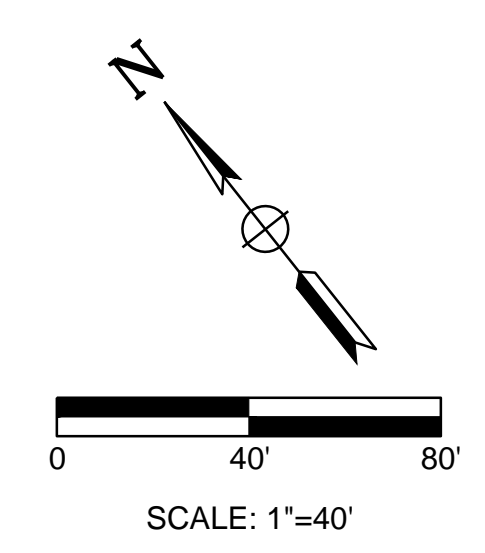
- PROJECT NOTES:**
- FURNISH AND INSTALL RAISED TEMPORARY RUBBER MEDIANS PER CITY OF PALO ALTO REQUIREMENTS.
 - INSTALL 12" WHITE STRIPE.
 - INSTALL 24" WHITE STRIPE AT 4' O.C.
 - EXISTING CROSS WALK STRIPES TO REMAIN.
 - INSTALL W11-2 SIGN AND W16-9P SIGN.
 - INSTALL W11-2 SIGN AND W16-7P SIGN.
 - EXISTING MODIFIED R33A TO REMAIN. COVER UP TIME OF DAY ON SIGN.
 - REMOVE EXISTING TYPE VII ARROW AND ADD NEW PROPOSED TYPE VII (R) ARROW.

- LEGEND:**
- XX'XX' (DETAIL NUMBER) LENGTH OF DETAIL
 - CONFORM/ END/ CHANGE DETAILS
 - INSTALL TYPE I 10'-0" ARROW PER CALTRANS STD PLANS A24A
 - INSTALL TYPE IV (L OR R) ARROW PER CALTRANS STD PLANS A24A
 - INSTALL TYPE VI ARROW PER CALTRANS STD PLANS A24A
 - INSTALL TYPE VII (L OR R) ARROW PER CALTRANS STD PLANS A24A
 - INSTALL NEW THERMOPLASTIC STRIPING PER DETAIL NUMBER
 - INSTALL NEW SIGN
 - EXISTING SIGN



QUANTITY TABLE (SIGNAGE)

ITEM	REMOVAL	INSTALL
R3-5 (L) (30X36)	-	1
R61-5 (CA) (36X36)	-	1
W4-2 (L) (36X36)	-	1
W4-2 (R)	1	-
W9-1 (36X36)	-	1
W11-2 (36X36)	-	8
W16-7P (24X12)	-	4
W16-9P (24X12)	-	4
W74-1 (CA) (30X30)	-	1



PROJECT NO.	042-053 Task 9.03
SCALE:	AS SHOWN
DRAWING NO.	SS-2
SHEET NO.	2 OF 2
DESIGNED BY:	M.Montero
CHECKED BY:	R.Patel
DATE:	MARCH 20, 2017

MIDDLEFIELD NORTH DESIGN PROJECT

SIGNAGE AND STRIPING PLAN
CITY LIMITS TO UNIVERSITY AVENUE

4305 Hacienda Drive, Suite 550
Pleasanton, CA 94568
tjkm@tjkm.com

TJKM

REGISTERED PROFESSIONAL ENGINEER
CIVIL ENGINEER
No. 65938
EXPIRES 12/31/2018

DATE SIGNED: _____

NO.	REVISIONS	DESCRIPTION	DATE	

City of Palo Alto
Planning & Community Development Dept.
Transportation Division
250 Hamilton Avenue
Palo Alto, CA 94301
O: (650) 329-2441
F: (650) 329-2154