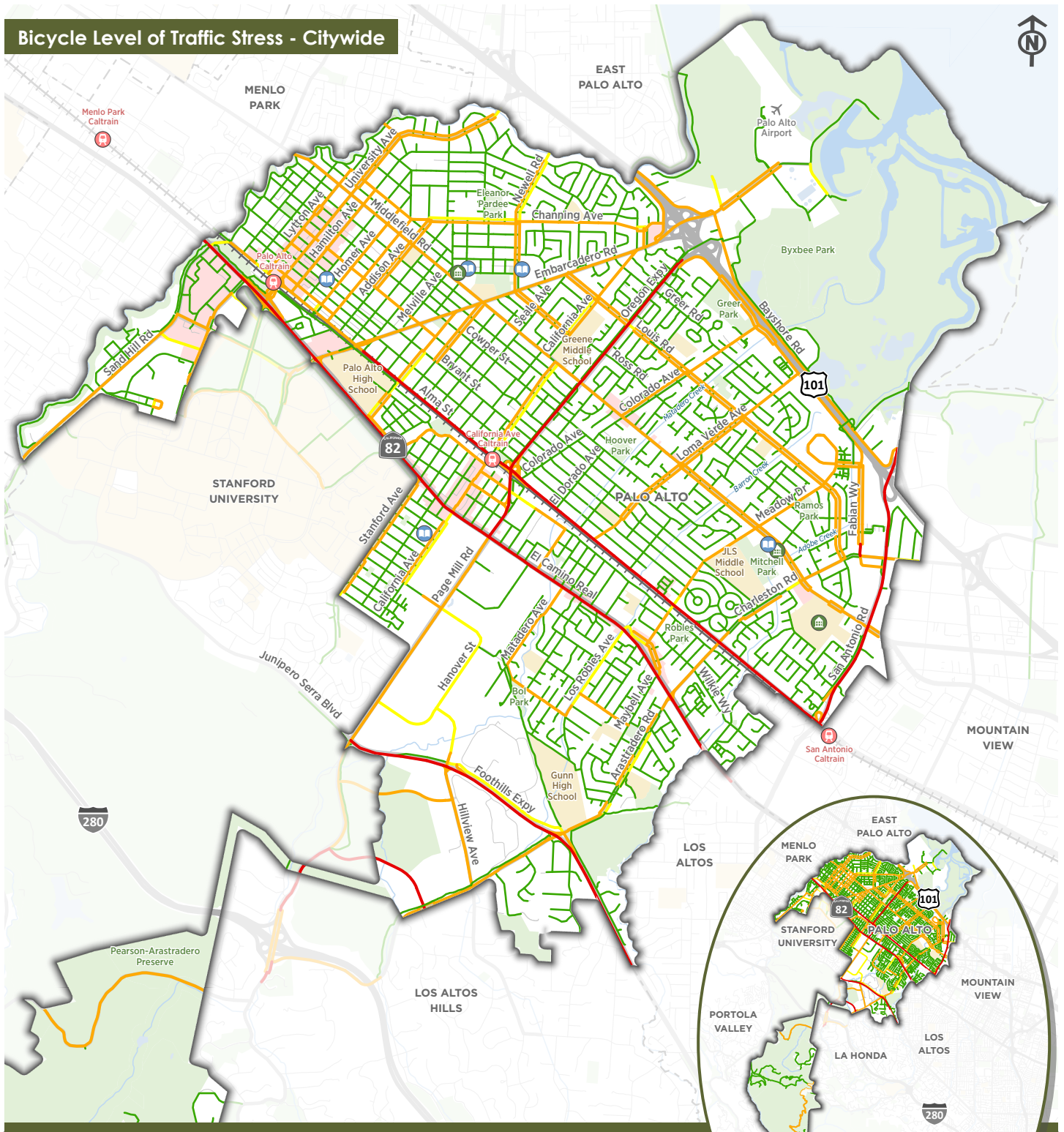
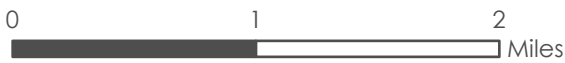
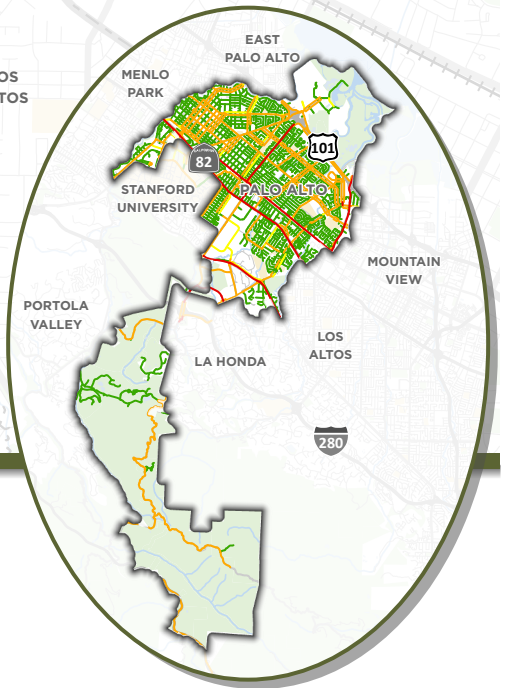


# Bicycle Level of Traffic Stress - Citywide



- |  |       |  |                   |  |                  |
|--|-------|--|-------------------|--|------------------|
|  | LTS 1 |  | City of Palo Alto |  | Community Center |
|  | LTS 2 |  | Park/Open Space   |  | Library          |
|  | LTS 3 |  | School/University |  | Caltrain Stop    |
|  | LTS 4 |  | Commercial Center |  | Railroad         |

**Note:** Split lines are only used for roadways with different conditions per direction (for example: bike lane in only one direction or parking only on one side), otherwise all roads are shown with only a centerline.



Data Sources: City of Palo Alto, MTC

