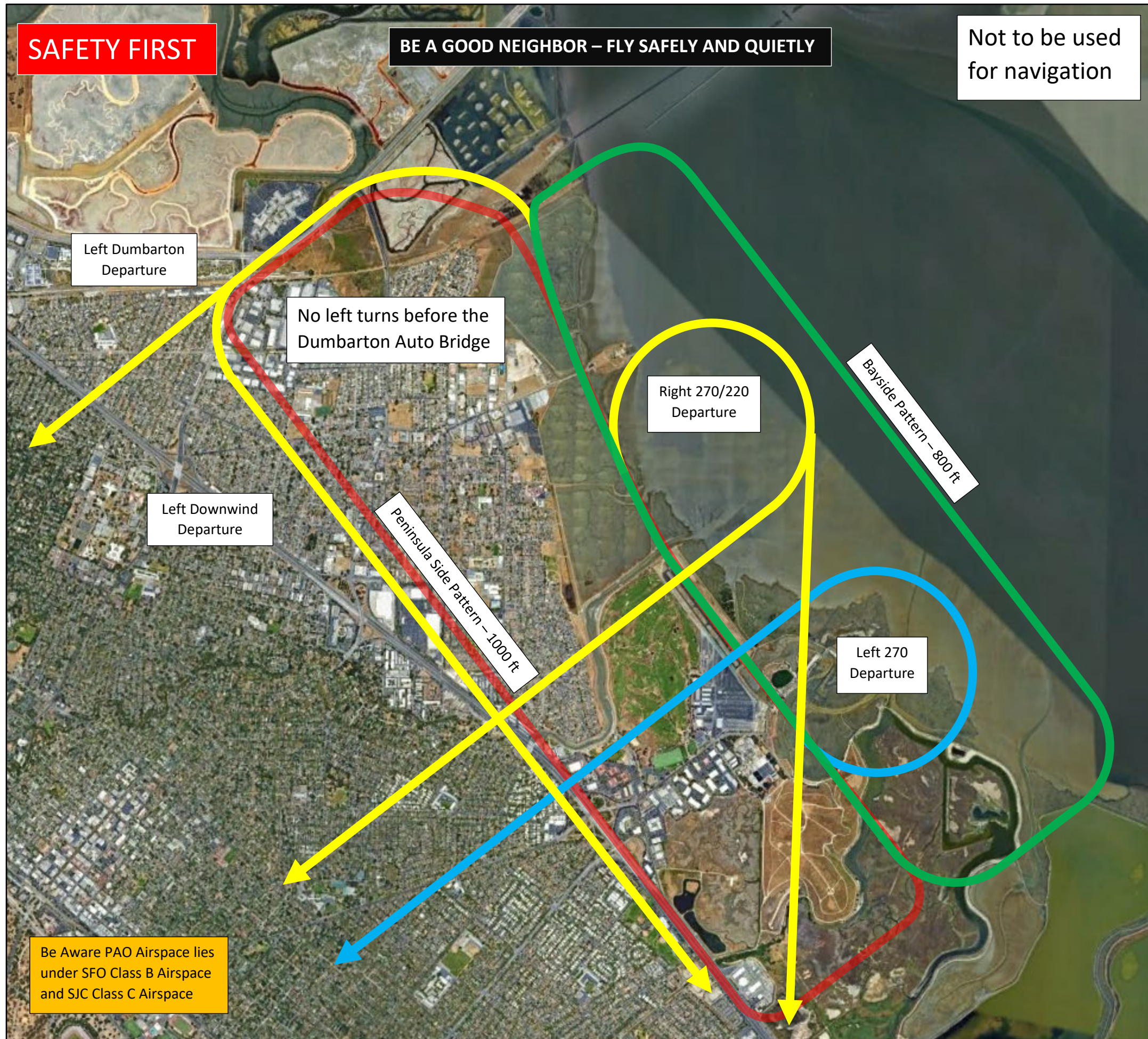


**SAFETY FIRST**

**BE A GOOD NEIGHBOR – FLY SAFELY AND QUIETLY**

Not to be used  
for navigation



**PAO Noise Abatement Procedures**  
Please fly neighborly and be aware of the surrounding communities. There are noise sensitive areas to the West and South of the Airport. **Aircraft are asked to climb to and maintain at least 1500 feet before crossing Hwy 101.**  
  
Fly over the bay whenever possible.  
  
Please use reduced power settings whenever safely possible to reduce noise impacts. Even a reduction in 200 RPM can significantly reduce noise.

**Preferred Noise Abatement Procedures**  
**Runway 31**  
**Left Dumbarton Departure**  
When departing RWY 31 turn right 10° on takeoff and climb over the bay. Fly to the Dumbarton Auto Bridge before making a left turn to fly over the peninsula or to the South. Cross Highway 101 at or above 1500 feet.  
  
**Right 270°/220° Departure**  
After takeoff climb over the bay while making a 220° turn to the South or 270° turn to the West. Cross Hwy 101 at or above 1500 feet.  

- Clearly make request to PAO ATCT the desire to make a 220° or 270 turn. ATCT will deny all right downwind departures.

**Runway 13**  
**Left 270° Departure**  
After takeoff turn left and climb over the bay while making a 270° turn to the West. Cross over Highway 101 at or above 1500 feet.

**PAO General Information**  
Bayside Pattern Altitude – 800 feet  
Peninsula Side Pattern Altitude – 1000 feet  
ATCT Hours of Operation – 0700 – 2100 hrs  
ACT / CTA Frequency – 118.600  
ATC Ground Frequency – 125.000  
ATIS Frequency – 135.275  
Fuel Frequencies – 122.85 or 122.95  
Airport Operations Phone Number – (650) 690-5992

**Caution**  
The Palo Alto Baylands preserve is located immediately to the north-east of the airport. Watch for birds on or near the airport.

**ATCT DIRECTION SUPERSEDES NOISE ABATEMENT**

Be Aware PAO Airspace lies under SFO Class B Airspace and SJC Class C Airspace