

Wilkie Bridge Pilot Test - Community Survey - Wet Deck Surface Conditions

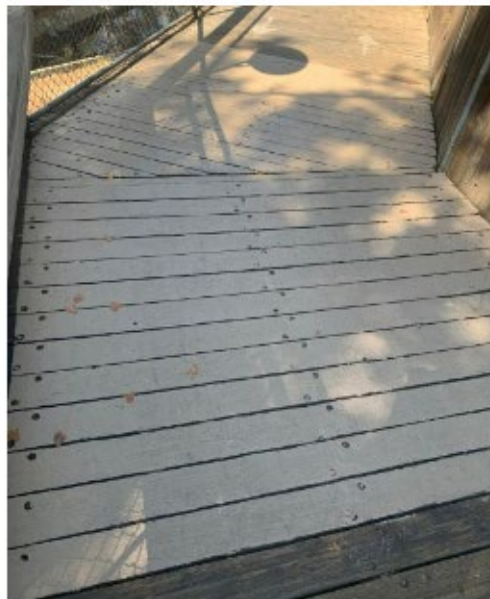
The City of Palo Alto is conducting a pilot test at Wilkie Bridge to explore options to address the issue raised by members of the community regarding slipperiness of the wood decking surface when wet. Two anti-slip surfacing products have been installed on the existing wood deck in two separate sections of the bridge with input received from the Palo Alto Pedestrian and Bicycle Advisory Committee (PABAC). We would like to obtain your feedback about how the anti-slip products perform during the wet season.

Option 1 is the Anti-Slip Fiberglass Deck Strips and Option 2 is the Non-Skid Rubberized Coating. Images of each option are shown below for reference. Please respond to the following survey questions.

Option 1: Anti-Slip Fiberglass Deck Strips



Option 2: Non-Skid Rubberized Coating



1. Are you a Palo Alto resident?

Yes

No

2. What type of bridge user are you?

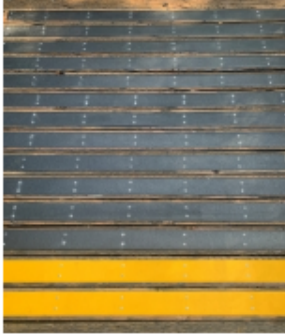
Bicyclist

Pedestrian

Other (please specify)

3. Which product seems better for preventing slipping?

Option 1: Anti-Slip Fiberglass Deck Strips



Option 2: Non-Skid Rubberized Coating



Both are OK. I have no preference.

Neither

4. Provide any feedback or concerns you have with Option 1: Anti-Slip Fiberglass Deck Strips when using the bridge in wet conditions.

5. Provide any feedback or concerns you have with Option 2: Non-Skid Rubberized Coating when using the bridge in wet conditions.

Wilkie Bridge Pilot Test - Community Survey - Dry Deck Surface Conditions

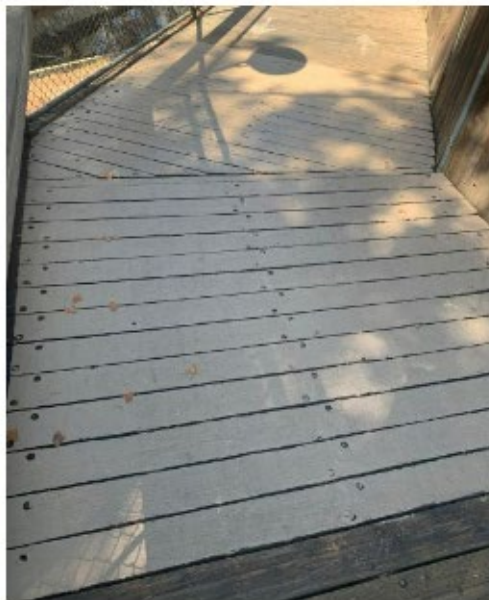
The City of Palo Alto is conducting a pilot test at Wilkie Bridge to explore options to address the issue raised by members of the community regarding slipperiness of the wood decking surface when wet. Two anti-slip surfacing products have been installed on the existing wood deck in two separate sections of the bridge with input received from the Palo Alto Pedestrian and Bicycle Advisory Committee (PABAC). We would like to obtain your feedback about how the anti-slip products perform during the dry season.

Option 1 is the Anti-Slip Fiberglass Deck Strips and Option 2 is the Non-Skid Rubberized Coating. Images of each option are shown below for reference. Please respond to the following survey questions.

Option 1: Anti-Slip Fiberglass Deck Strips



Option 2: Non-Skid Rubberized Coating



1. Are you a Palo Alto resident?

- Yes
- No

2. What type of bridge user are you?

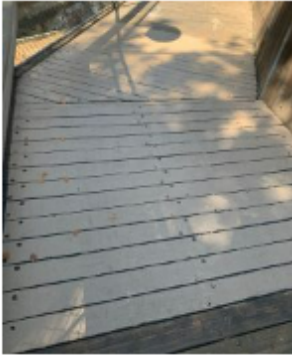
- Bicyclist
- Pedestrian
- Other (please specify)

3. Which product do you like better in dry deck surface conditions?

Option 1: Anti-Slip Fiberglass Deck Strips



Option 2: Non-Skid Rubberized Coating



Both are OK. I have no preference.

Neither

4. Provide any feedback or concerns you have with Option 1: Anti-Slip Fiberglass Deck Strips when using the bridge in dry conditions.

5. Provide any feedback or concerns you have with Option 2: Non-Skid Rubberized Coating when using the bridge in dry conditions.