



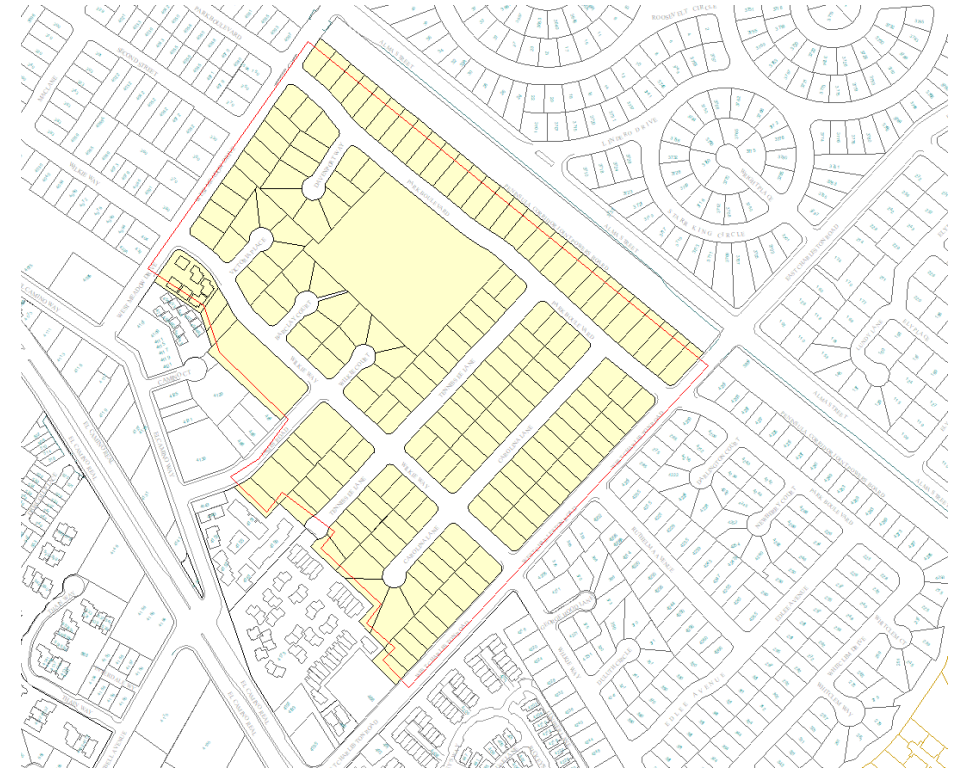
Robles Park Playground Renovation

4.25.24

Community Meeting #2

Outreach

- 256 Post Cards Mailed
- 2 Signs Posted in Park
- Charleston Meadows Community Email – No Current Neighborhood Representative



Topics of Review

- Review of Prior Equipment Options and Input
- Review New Playground Equipment Option
- Comments and Questions
- Project Schedule

Review Prior Meeting

Why Replace the Playground Equipment

- Playground equipment replaced every 15-20 years – Playgrounds installed in 1996
- Replacement parts difficult to get as equipment gets older
- New play activities and equipment available
- Capital Improvement project adopted by council with a budget of \$370,000 to replace equipment

Existing Tot Lot Equipment



Playground Equipment

- 2 – Tower Landings
- 1 – Double Slide
- 1 – Curved Slide
- 1 – Sway Bridge
- 1 – Rope Climber
- 1 – Tunnel Climber
- 1 – Sand Play Station
- 4 – Spring Riders
- 1 – 2 Bucket Tot Swing

Existing Playground Equipment



Playground Equipment

- 2 – Tower Landings
- 2 – Spiral Slide
- 1 - Tube Slide
- 1 – Bridge
- 1 – Tunnel Climber
- 1 – Tube Slide
- 1 – Monkey Bars
- 1 – Balance Beam
- 1- Run In Place
- 1 – 2 Strap Seat

Playground Equipment Options

Tot Lot Playground Options (Ages 2-5)

Tot Lot Equipment Option #1

Playground Equipment

- 2 - Bucket Tot Swings
- 2 - Single Rider Spring Toys
- 1 - Double Rider Spring Toy
- 1 - Seat Spinner
- 1 - Log Tunnel
- Climbing Structure
 - 1 Dual Slide
 - 1 Single Slide
 - Overhead Shade
 - Step Climber
 - Ramp Climber



Tot Lot Equipment Option #2



Playground Equipment

- 2 - Bucket Tot Swings
- 1 - Single Rider Spring Toys
- 1 - Double Rider Spring Toy
- Climbing Structure
 - 2 - Swing Rings
 - 1 - Bridge Climber
 - Overhead Shade
 - Step Climber
 - Step Pads
 - Multiple Rope Climbers
 - 1 - Single Slide

Playground Equipment Options

Playground Options (Ages 5-12)

Play Equipment Option #1



Playground Equipment

- 1 – Omni Spinner
- 1 – Roper Climber
- 1 – Balance Swing
- 1 – Seat Spinner
- 1 – Balance Beam
- Climbing Structure
 - 1 - Dual Slide
 - 1 - Single Slide
 - Horizontal Climber
 - Belt Climber
 - Ramp Climber
 - Net Climber

Play Equipment Option #2



Playground Equipment

- 1 – Curved Slide
- 1 – Ring Climber
- 1 – Ring Ladder
- 1 – Seat Spinner
- 1 – Chair Spinner
- 1 – Pull Up Bar
- 1 – Balance Beam
- 1 – Spring Bouncer
- 1 – Multi Climber
- 1 - Standing Spinner

Playground Surface Options

Playground Surface Options

Playground Surface Options



Play Mulch (Currently Used)



Synthetic Turf



Rubberized Safety Surface

Community Input from Prior Meeting

- Maintain Swings in Playground
- Improve fencing around larger playground to be more enclosed
- Option 1 was preferred over Option 2 in both playground designs
- Request to provide equipment option that was closer to the existing
- Rubber surfacing was the preferred surfacing – dependent on budget

Updated Playground Equipment Option

CO-OP Agreement

- Established with Ross Recreation the main supplier of playground equipment for the City
- Provides better pricing for equipment and installation work
- Ensures replacement parts are available if future repairs are needed

Playground Equipment Options

Tot Lot Playground Options (Ages 2-5)

Tot Lot Equipment Option #3



Playground Equipment

- 2 - Bucket Tot Swings
- 1 - Single Rider Spring Toy
- 1 - Double Rider Spring Toy

Climbing Structure

- Dual Slide
- Roller Slide
- Spiral Slide
- Tunnel Climber
- Arch Climber
- Step Climber
- Monkey Bars
- Tot Table
- Overhead Shade

Tot Lot Equipment Option #3



Playground Equipment

- 2 - Bucket Tot Swings
- 1 - Single Rider Spring Toy
- 1 - Double Rider Spring Toy

Climbing Structure

- Dual Slide
- Roller Slide
- Spiral Slide
- Tunnel Climber
- Arch Climber
- Step Climber
- Monkey Bars
- Tot Table
- Overhead Shade

Existing Tot Lot Equipment



Playground Equipment

- 2 – Tower Landings
- 1 – Double Slide
- 1 – Curved Slide
- 1 – Sway Bridge
- 1 – Rope Climber
- 1 – Tunnel Climber
- 1 – Sand Play Station
- 4 – Spring Riders
- 1 – 2 Bucket Tot Swing

Playground Equipment Options

Questions or Comments?

or

Provide Input in Chat for Tot Lot
Option

Playground Equipment Options

Playground Options (Ages 5-12)

Play Equipment Option #3



Playground Equipment

- Swing with 3 Belt Swings and 1 Accessible Swing
- Group Spinner
- Seat Spinner

Climbing Structure

- Curved Slide
- Double Slide
- Undulating Slide
- Climbing Wall
- Arched Climber
- Sway Bridge
- Step Climber
- Monkey Bars
- Arched Ladder

- Chain link fence added to railing

Play Equipment Option #3



Playground Equipment

- Swing with 3 Belt Swings and 1 Accessible Swing
- Group Spinner
- Seat Spinner

Climbing Structure

- Curved Slide
- Double Slide
- Undulating Slide
- Climbing Wall
- Arched Climber
- Sway Bridge
- Step Climber
- Monkey Bars
- Arched Ladder

- Chain link fence added to railing

Existing Playground Equipment



Playground Equipment

- 2 – Tower Landings
- 2 – Spiral Slide
- 1 - Tube Slide
- 1 – Bridge
- 1 – Tunnel Climber
- 1 – Tube Slide
- 1 – Monkey Bars
- 1 – Balance Beam
- 1- Run In Place
- 1 – 2 Strap Seat

Playground Equipment Options

Questions or Comments?
or
Provide Input in Chat for
Playground Options

Project Schedule

Project Next Steps

- Installation of New Playground – Fall/Winter of 2024 (4 month Construction Period)

Project Next Steps

- Contact me at peter.Jensen@cityofpaloalto.org
- Project web page www.cityofpaloalto.org/roblespark
- Please provide response in the chat if you would support a restroom in the park installed at a future date



CITY OF

PALO ALTO
