

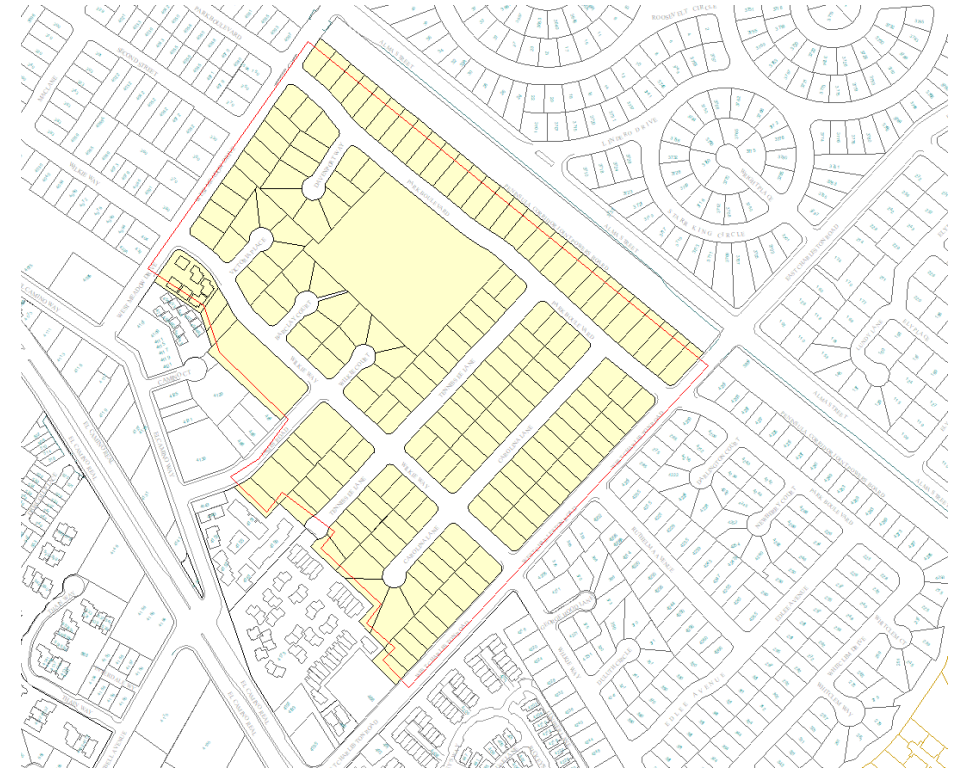


Robles Park Playground Renovation

7.19.23

Outreach

- 256 Post Cards Mailed
- 2 Signs Posted in Park
- Charleston Meadows Community Email – No Current Neighborhood Representative



Topics of Review

- Playground Equipment Options
- Types of Surfacing Options
- Comments and Questions
- Project Schedule

Playground Equipment Options

Why Replace the Playground Equipment

- Playground equipment replaced every 15-20 years – Playgrounds installed in 1996
- Replacement parts difficult to get as equipment gets older

Playground Equipment Options

Tot Lot Playground Options (Ages 2-5)

Tot Lot Equipment Option #1

Playground Equipment

- 2 - Bucket Tot Swings
- 2 - Single Rider Spring Toys
- 1 - Double Rider Spring Toy
- 1 - Seat Spinner
- 1 - Log Tunnel
- Climbing Structure
 - 1 Dual Slide
 - 1 Single Slide
 - Overhead Shade
 - Step Climber
 - Ramp Climber



Tot Lot Equipment Option #1



Playground Equipment

- 2 - Bucket Tot Swings
- 2 - Single Rider Spring Toys
- 1 - Double Rider Spring Toy
- 1 - Seat Spinner
- 1 - Log Tunnel
- Climbing Structure
 - 1 - Dual Slide
 - 1 - Single Slide
 - Overhead Shade
 - Step Climber
 - Ramp Climber

Tot Lot Equipment Option #2



Playground Equipment

- 2 - Bucket Tot Swings
- 1 - Single Rider Spring Toys
- 1 - Double Rider Spring Toy
- Climbing Structure
 - 2 - Swing Rings
 - 1 - Bridge Climber
 - Overhead Shade
 - Step Climber
 - Step Pads
 - Multiple Rope Climbers
 - 1 - Single Slide

Tot Lot Equipment Option #2



Playground Equipment

- 2 - Bucket Tot Swings
- 1 - Single Rider Spring Toys
- 1 - Double Rider Spring Toy
- Climbing Structure
 - 2 - Swing Rings
 - 1 - Bridge Climber
 - Overhead Shade
 - Step Climber
 - Step Pads
 - Multiple Rope Climbers
 - 1 - Single Slide

Playground Equipment Options

Provide Input in Chat for Tot Lot
Options 1 or 2

Playground Equipment Options

Playground Options (Ages 5-12)

Play Equipment Option #1



Playground Equipment

- 1 – Omni Spinner
- 1 – Roper Climber
- 1 – Balance Swing
- 1 – Seat Spinner
- 1 – Balance Beam
- Climbing Structure
 - 1 - Dual Slide
 - 1 - Single Slide
 - Horizontal Climber
 - Belt Climber
 - Ramp Climber
 - Net Climber

Play Equipment Option #1



Playground Equipment

- 1 – Omni Spinner
- 1 – Roper Climber
- 1 – Balance Swing
- 1 – Seat Spinner
- 1 – Balance Beam
- Climbing Structure
 - 1 - Dual Slide
 - 1 - Single Slide
 - Horizontal Climber
 - Belt Climber
 - Ramp Climber
 - Net Climber

Play Equipment Option #2



Playground Equipment

- 1 – Curved Slide
- 1 – Ring Climber
- 1 – Ring Ladder
- 1 – Seat Spinner
- 1 – Chair Spinner
- 1 – Pull Up Bar
- 1 – Balance Beam
- 1 – Spring Bouncer
- 1 – Multi Climber
- 1 - Standing Spinner

Play Equipment Option #2



Playground Equipment

- 1 – Curved Slide
- 1 – Ring Climber
- 1 – Ring Ladder
- 1 – Seat Spinner
- 1 – Chair Spinner
- 1 – Pull Up Bar
- 1 – Balance Beam
- 1 – Spring Bouncer
- 1 – Multi Climber
- 1 – Standing Spinner

Playground Equipment Options

Provide Input in Chat for
Equipment Options 1 or 2

Playground Surface Options

Playground Surface Options

Playground Surface Options



Play Mulch (Currently Used)



Synthetic Turf



Rubberized Safety Surface

Playground Equipment Options

Provide Input in Chat for
Surfacing Type

Location Selection Process – Initial Site Review

Comments and Questions

Project Next Steps

Project Next Steps

- Community Meeting To Select Equipment Type (Tonight)
- Installation of New Playground – Summer of 2024 (4 months)

Project Next Steps

- Contact me at peter.Jensen@cityofpaloalto.org
- Project web page www.cityofpaloalto.org/roblespark



CITY OF

PALO ALTO
