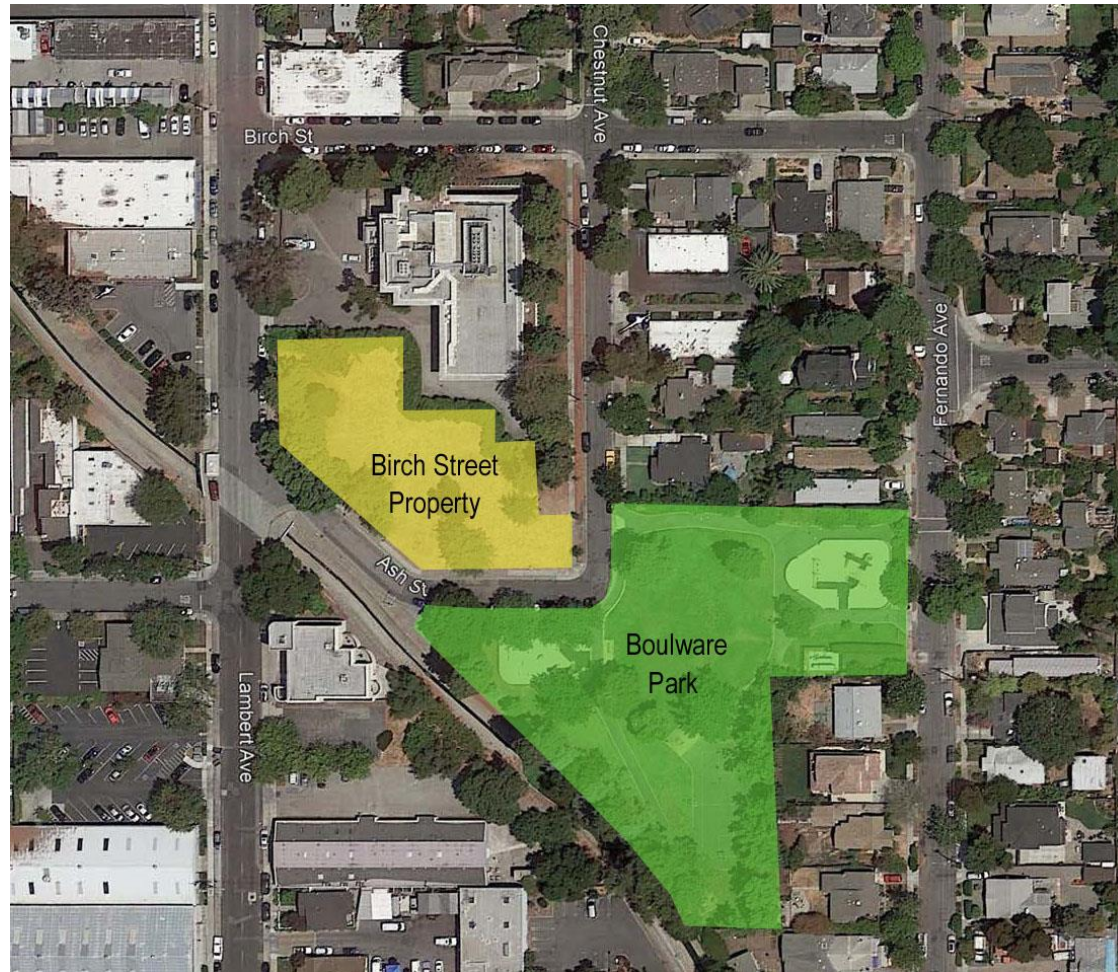


# **Boulevard Park Renovation & Expansion Project**

Park and Recreation Commission

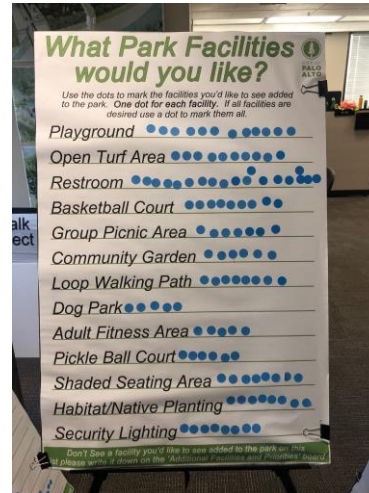
January 26, 2021

# Existing Boulware Park & Birch Street Property



# Community Engagement

# Community Meeting #1



# Community Input

Input provided at the first on site meeting and on-line survey by 80+ community members

## Facility Selection Question

Playground: 38 votes  
Security Lighting: 31 votes  
Shaded Seating Area: 30 votes  
Open Turf Area: 28 votes  
Restroom: 27 votes  
Loop Walking Path: 25 votes  
Group Picnic Areas: 22 votes  
Creek Lookout: 20 votes  
Habitat/Native Planting: 18 votes  
Basketball Court: 16 votes  
Community Garden: 12 votes  
Dog Park: 12 votes  
Adult Fitness Area: 8 votes  
Pickle Ball Court: 4 votes  
Bocce Ball: 4 votes  
Horse Shoes: 4 votes

## Facility Priority Question

### High Priority:

Playground, Open Turf Area, Restroom

### Medium Priority:

Shaded Seating Areas, Basketball Court, Group Picnic Area, Loop Walking Path, Security Lighting, Habitat/Native Planting

### Low Priority:

Community Garden, Dog Park, Adult Fitness, Creek Lookout, Bocce Ball, Pickle Ball & Horse Shoes

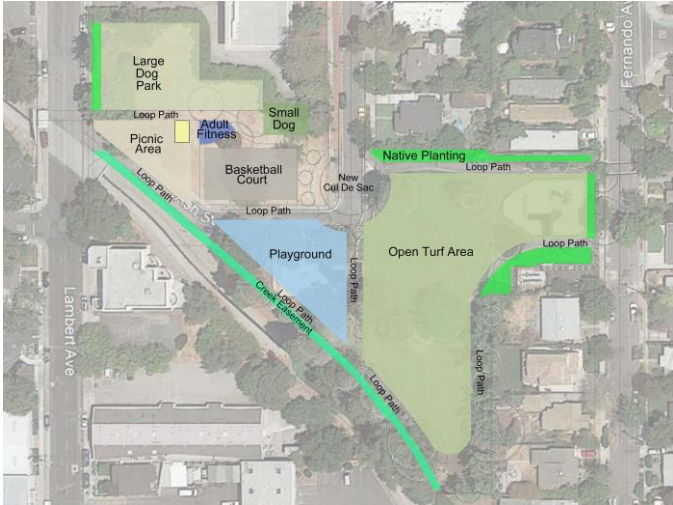
# Community Meeting #2



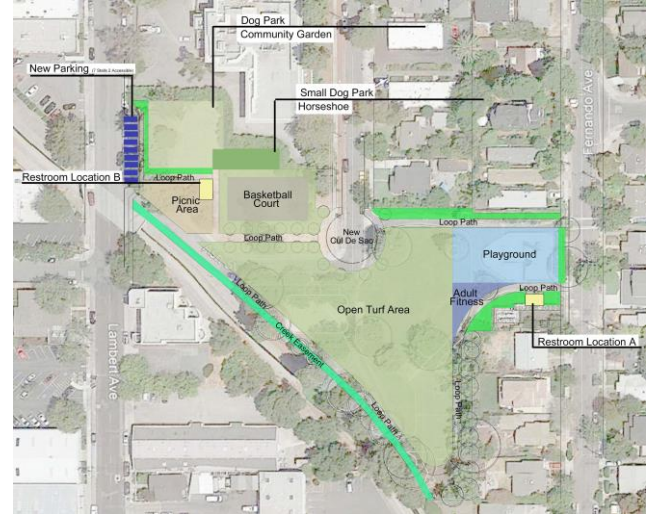
# Design Option Review

- **Joint meeting with the North Ventura Coordinated Area Plan MVCAP (February 2020)**
- **Three Design Options were presented for community input**
- **Each option had a different configuration as well as alternative options to consider**
- **Community requested to place sticker dots on the overall design they liked the most as well as options of different uses per each plan**
- **Options incorporate the different facilities from the community meeting and survey**
- **Options considered future creek improvements when locating facilities**

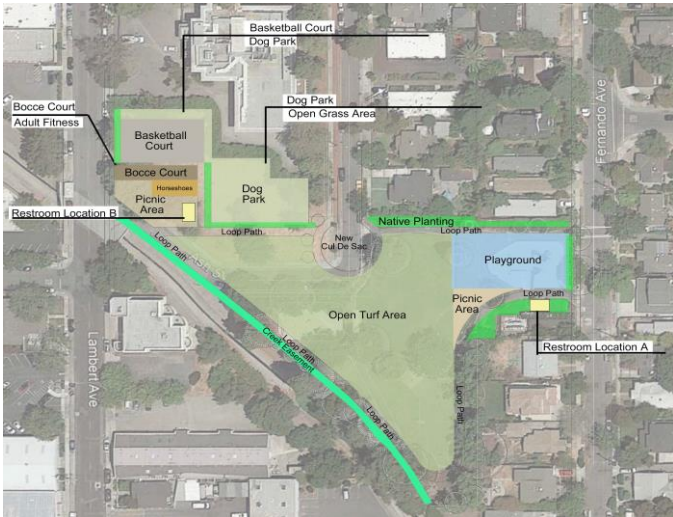
# Plan Option Review



Option 1



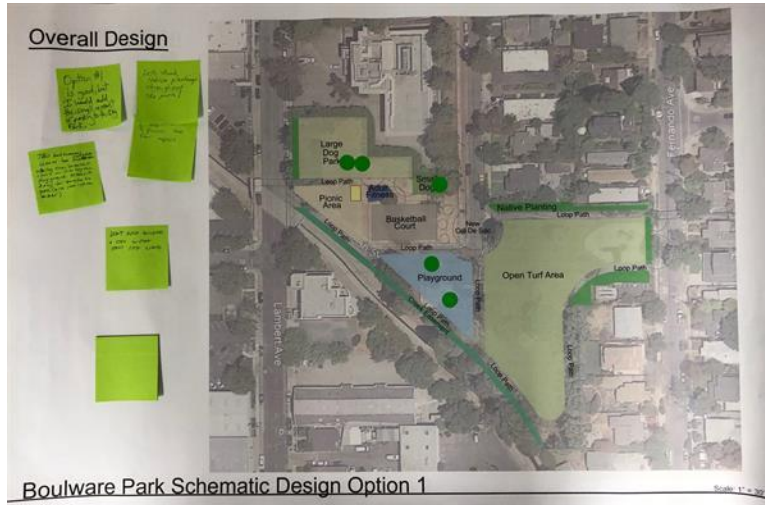
Option 2



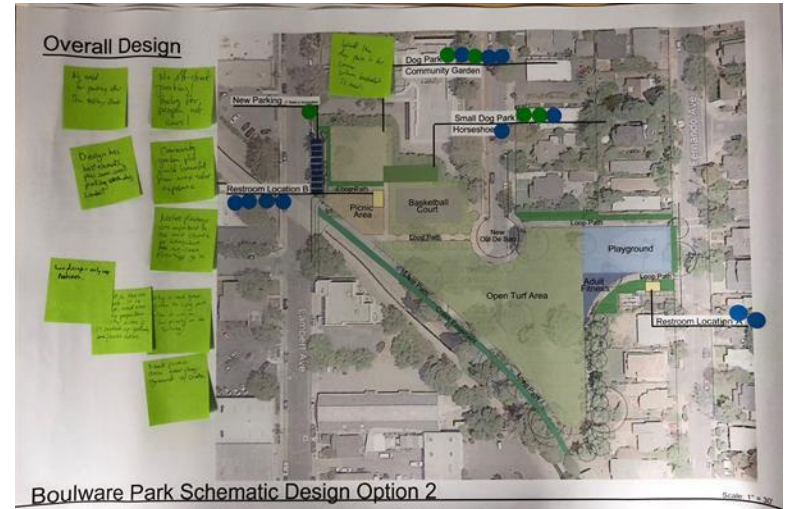
Option 3



# Community Comments



Option 1



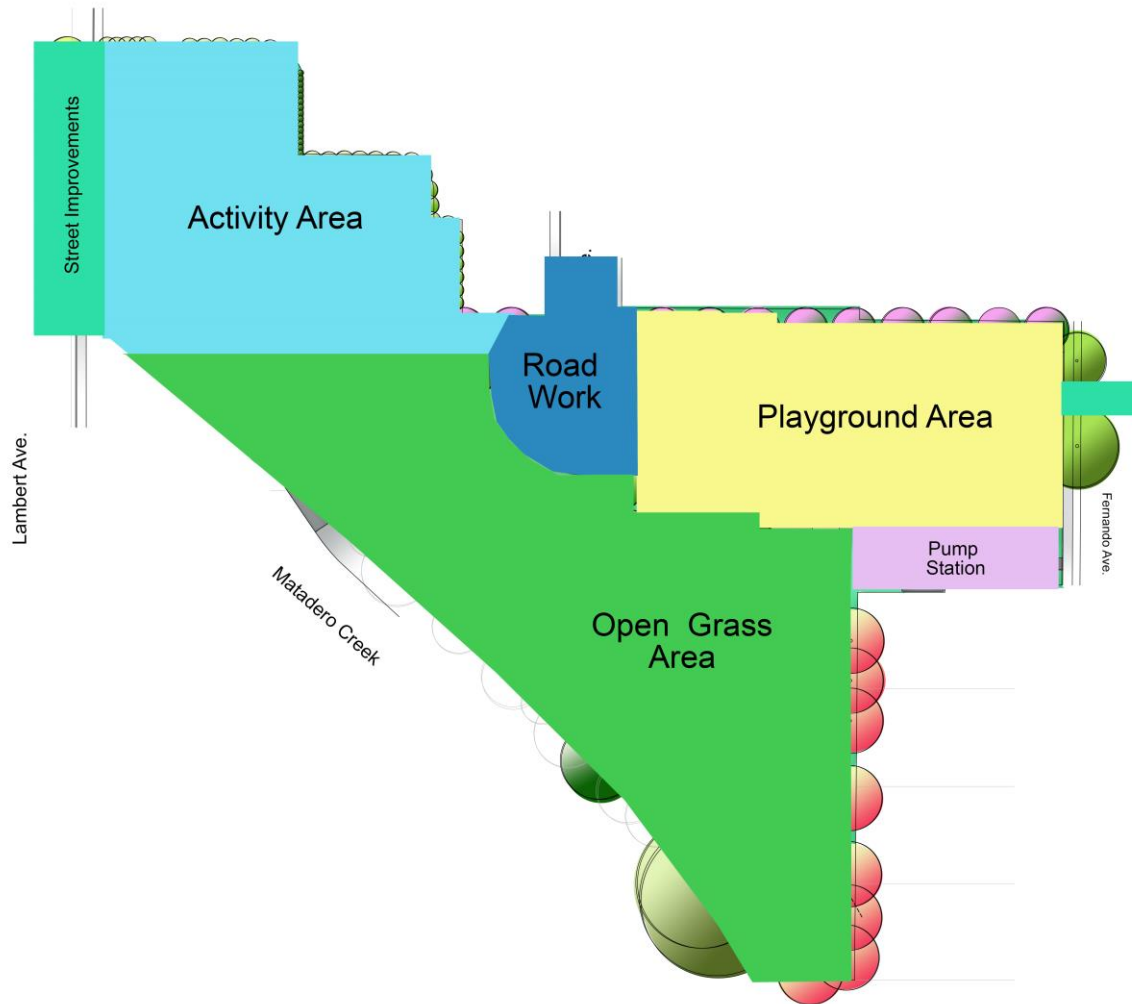
Option 2



Option 3

# Draft Park Plan Design Review

# Areas of Park Development

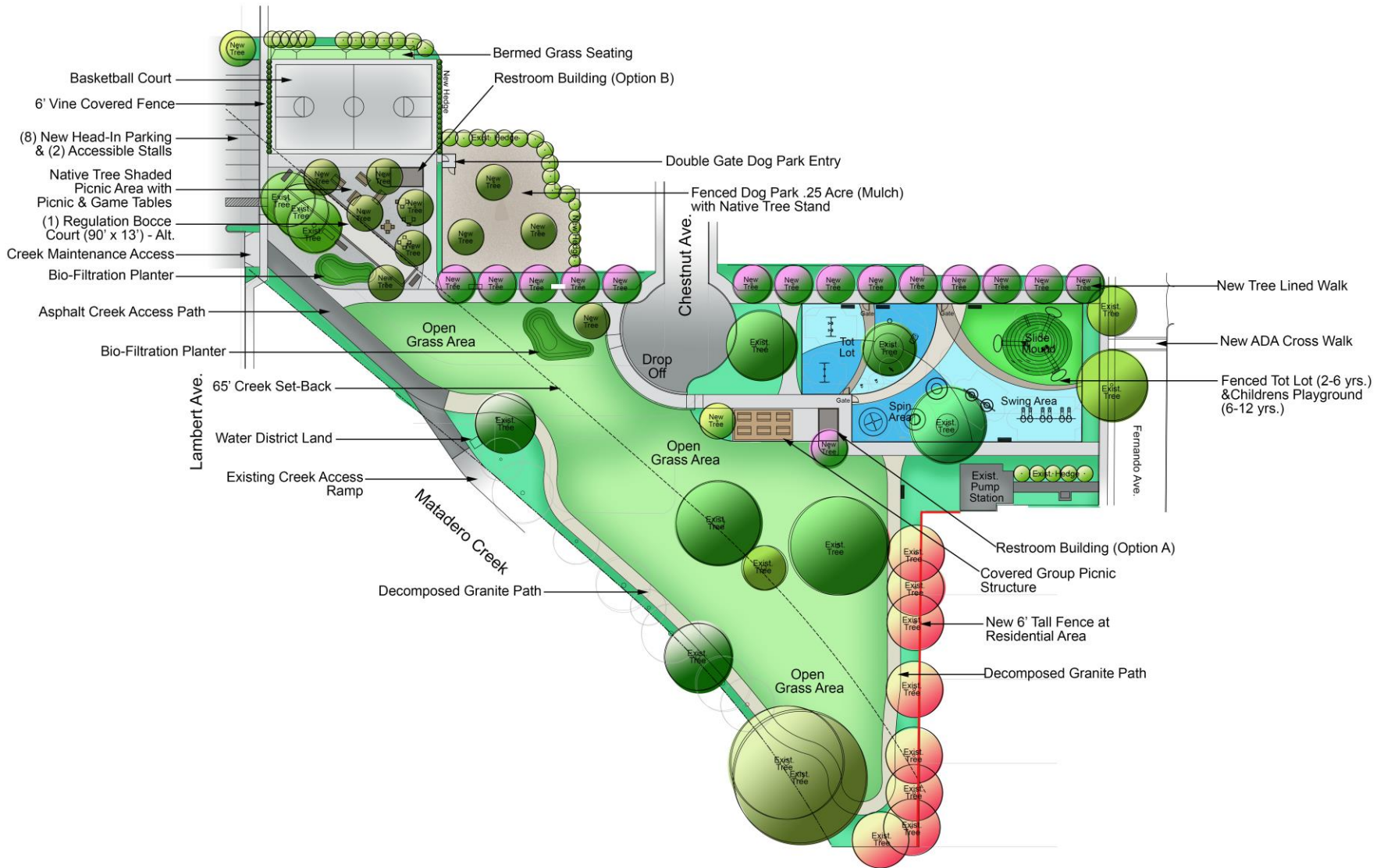


# Design Highlights

- **The playground is equal in size as the two existing playgrounds**
- **Installation of significant paving or structures were moved a min. of 65' from the edge of the creek**
- **Removal of a portion of Ash Street and the addition of a park drop off**
- **Plan retains existing park amenities:**
  - **Basketball**
  - **Open turf area**
  - **Children & tot playground**
  - **Picnic space**
  - **Walking Path**
- **New Park amenities include:**
  - **Restrooms**
  - **Dog park area**
  - **Covered picnic area**
  - **Bocce ball**
  - **Rain gardens**
  - **Expanded picnic & game tables**
  - **Expanded loop walkway**
- **Accessible & additional parking along Lambert**
- **Pump Station to Remain**



# Areas of Park Development



# Playground Design



# Community Input

- **The community was in support of the overall design & location of proposed park amenities**
- **Was in favor of removing a portion of Ash Street to connect the park**
- **The restroom location closest to the playground was preferred**
- **The community was in support of maintaining a 65' set-back of built structures along the creek**
- **Was in favor of adding head in parking along Lambert**

# Questions & Comments



# Project Schedule

- Parks & Recreation Commission Meeting #2 Review Final: January 26, 2021
- PRC Meeting #3 – Adoption of Park Improvement Ordinance (PIO): Spring 2021
- Bid Document Preparation: Spring/Summer 2021
- Council to Adopt (PIO) and Approve Contract: Summer 2021
- Project Bidding: Fall 2021 – **Per Approval of Funding**
- Construction Begins: Fall/Winter 2021

# Project Status

[www.cityofpaloalto.org/boulwarepark](http://www.cityofpaloalto.org/boulwarepark)