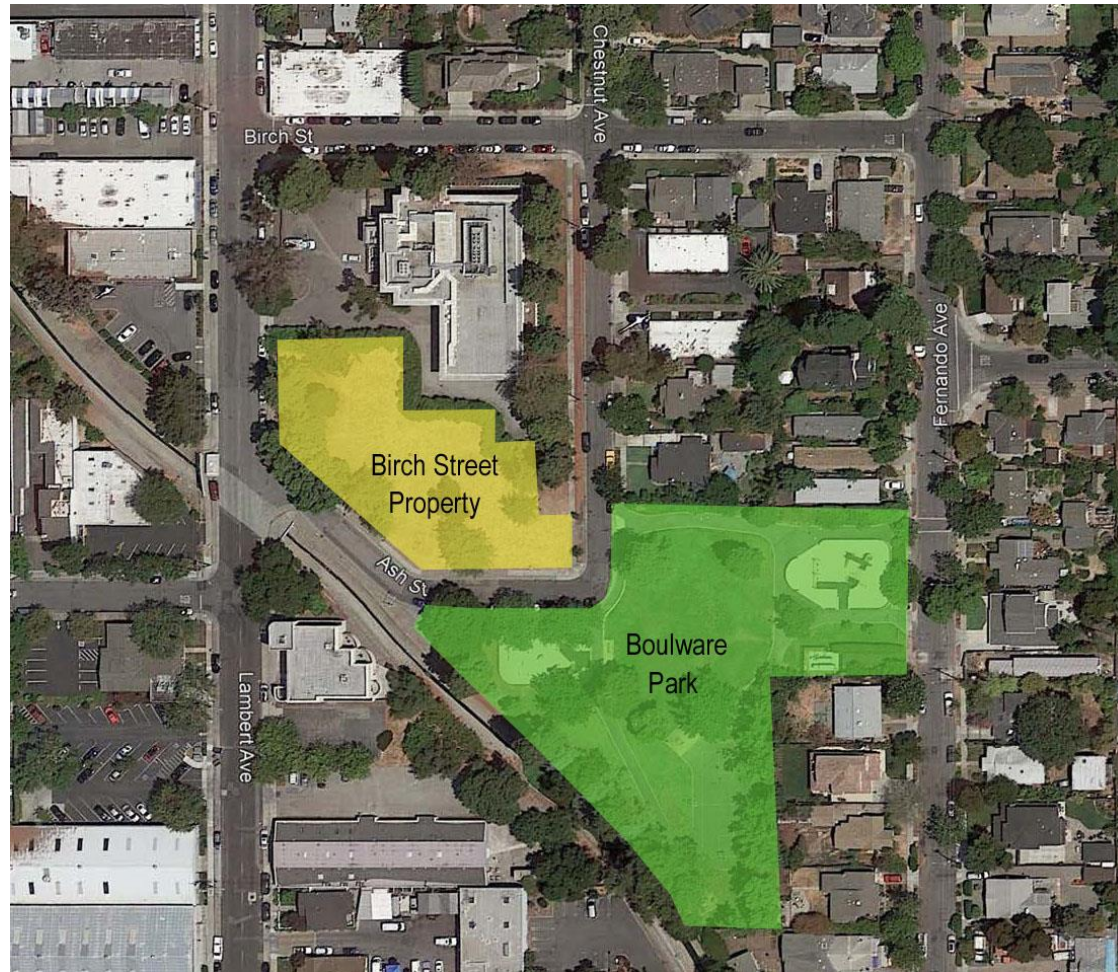


Boulevard Park Renovation & Expansion Project

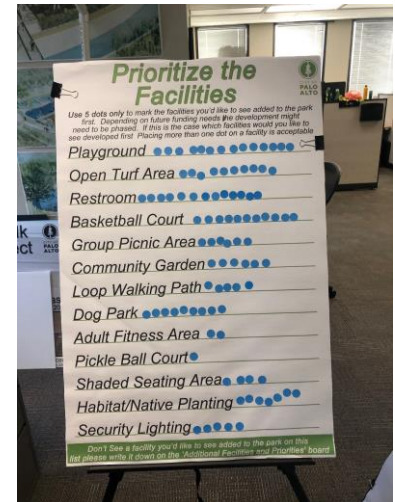
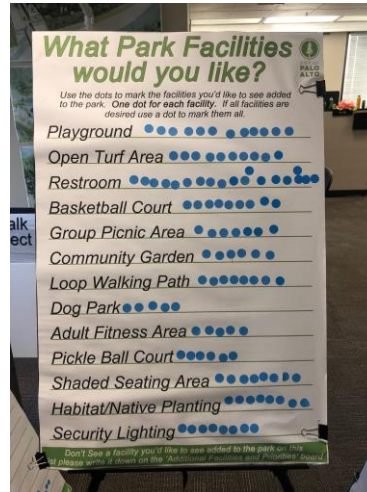
Community Meeting

December 7, 2020

Existing Boulware Park & Birch Street Property



Community Meeting #1



Community Input

Input provided at the first on site meeting and on-line survey by 80+ community members

Facility Selection Question

Playground: 38 votes
Security Lighting: 31 votes
Shaded Seating Area: 30 votes
Open Turf Area: 28 votes
Restroom: 27 votes
Loop Walking Path: 25 votes
Group Picnic Areas: 22 votes
Creek Lookout: 20 votes
Habitat/Native Planting: 18 votes
Basketball Court: 16 votes
Community Garden: 12 votes
Dog Park: 12 votes
Adult Fitness Area: 8 votes
Pickle Ball Court: 4 votes
Bocce Ball: 4 votes
Horse Shoes: 4 votes

Facility Priority Question

High Priority:

Playground, Open Turf Area, Restroom

Medium Priority:

Shaded Seating Areas, Basketball Court, Group Picnic Area, Loop Walking Path, Security Lighting, Habitat/Native Planting

Low Priority:

Community Garden, Dog Park, Adult Fitness, Creek Lookout, Bocce Ball, Pickle Ball & Horse Shoes

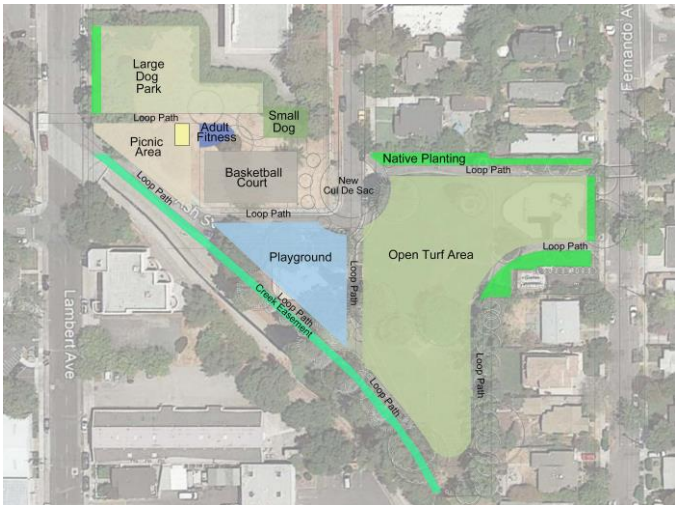
Community Meeting #2



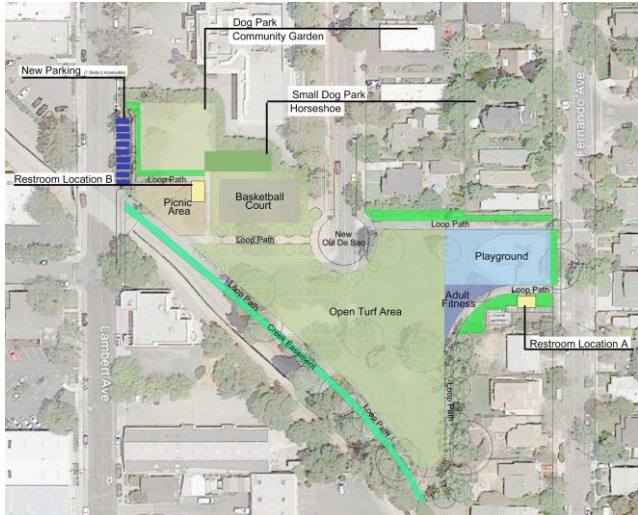
Design Option Review

- **Joint meeting with the North Ventura Coordinated Area Plan MVCAP (February 2020)**
- **Three Design Options were presented for community input**
- **Each option had a different configuration as well as alternative options to consider**
- **Community requested to place sticker dots on the overall design they liked the most as well as options of different uses per each plan**
- **Options incorporate the different facilities from the community meeting and survey**
- **Options considered future creek improvements when locating facilities**

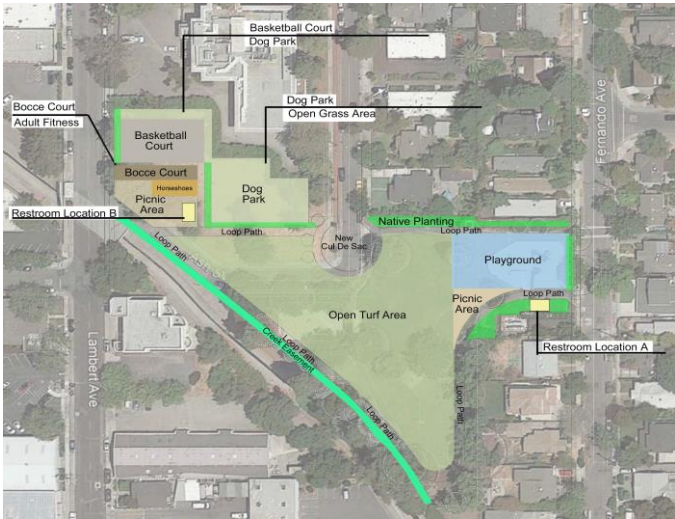
Plan Option Review



Option 1

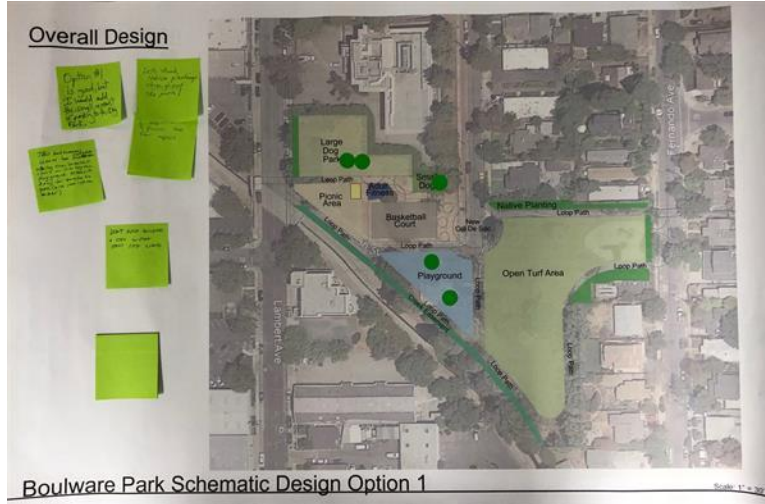


Option 2

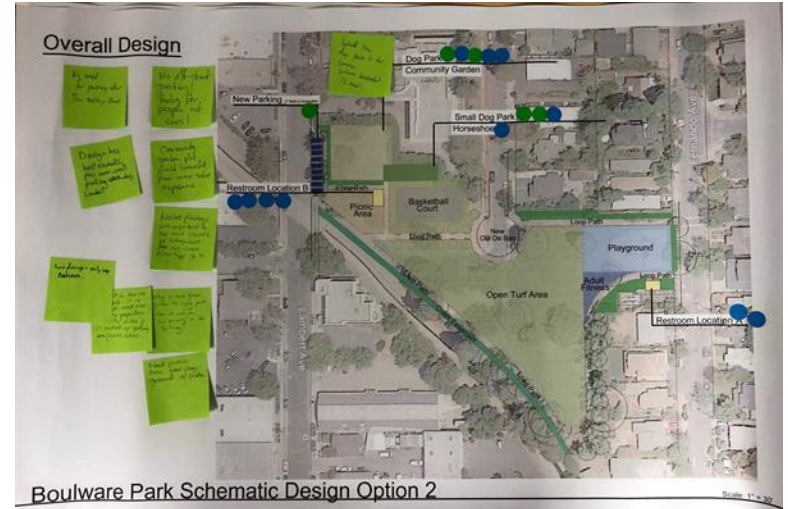


Option 3

Community Comments



Option 1



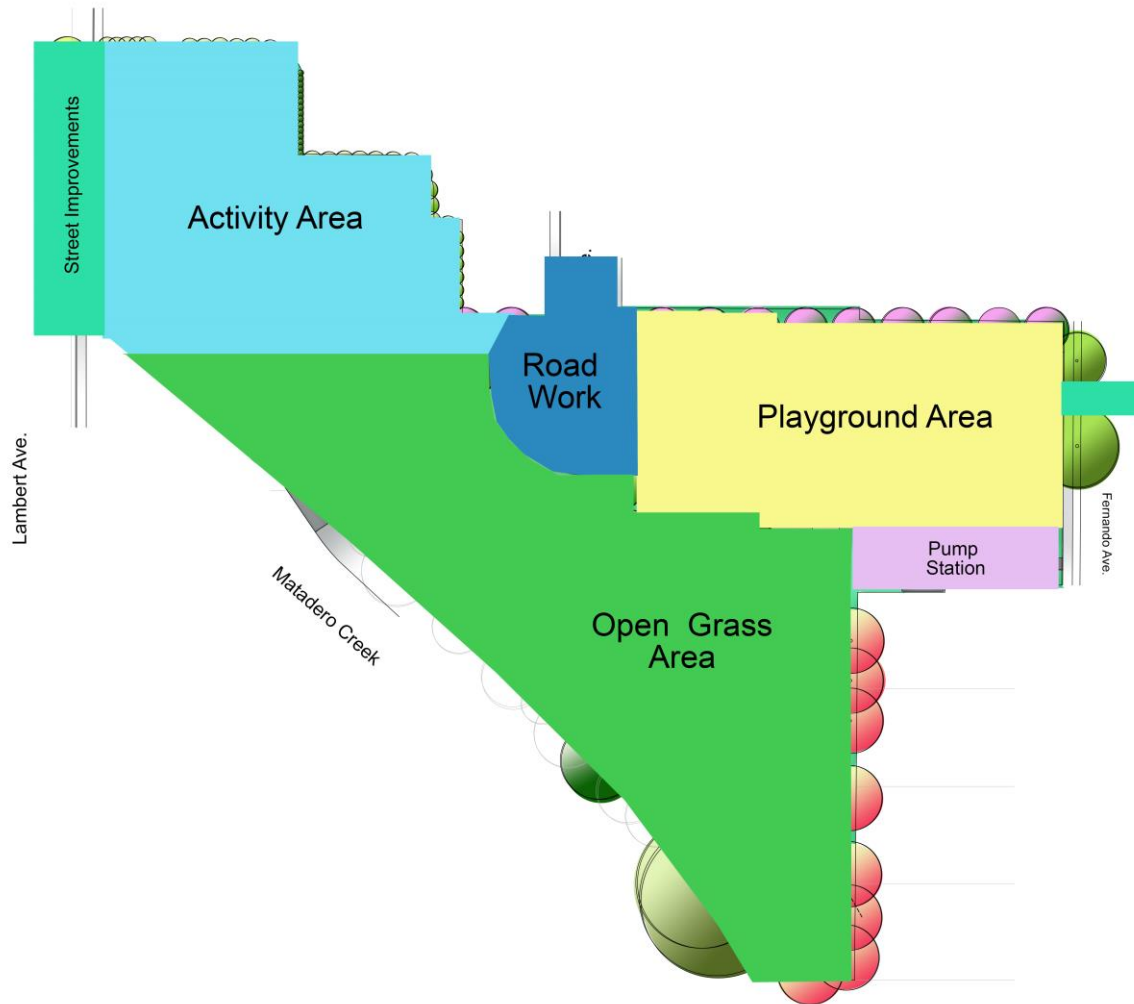
Option 2



Option 3

Draft Park Plan Design Review

Areas of Park Development

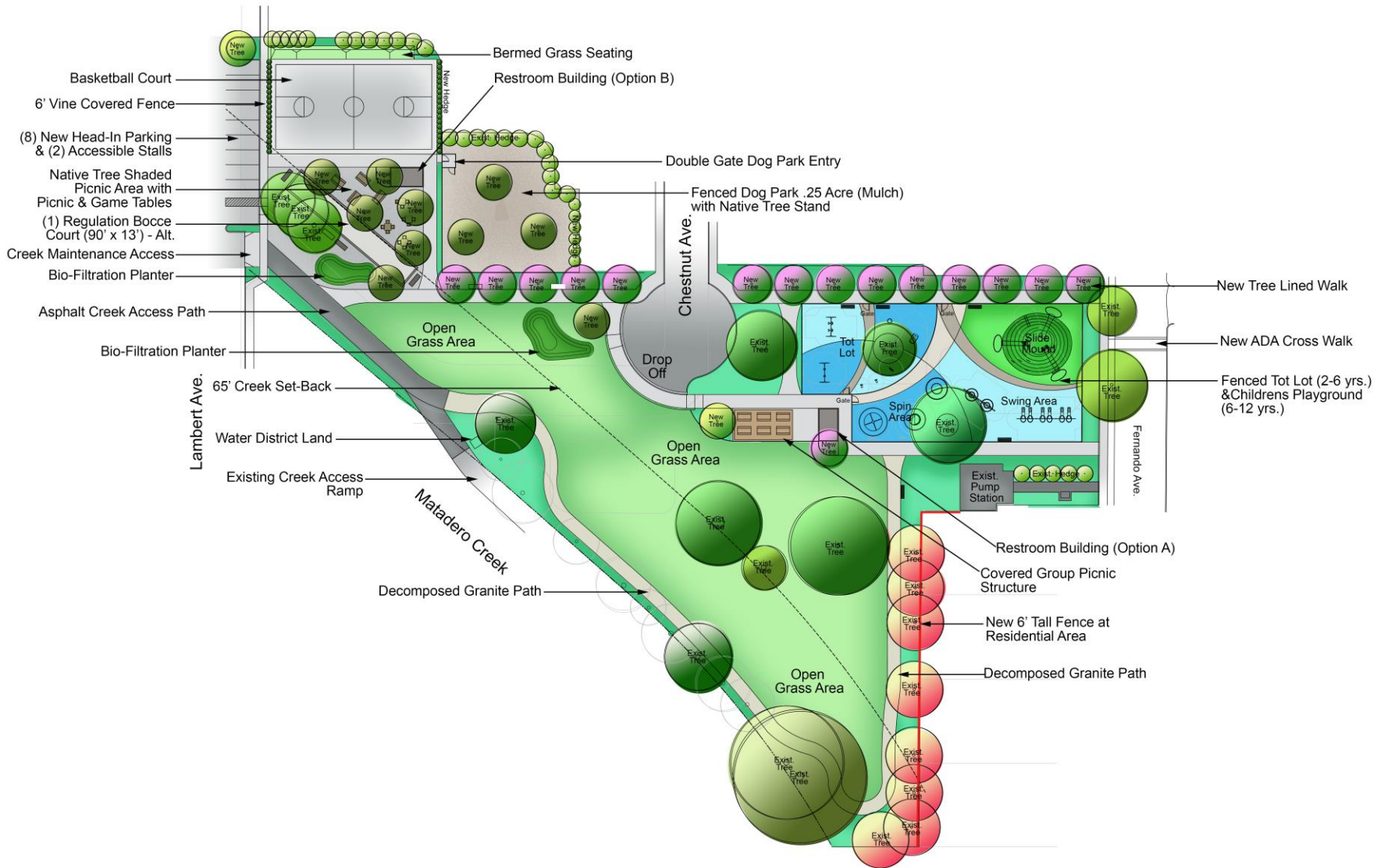


Design Highlights

- **The playground is equal in size as the two existing playgrounds**
- **Installation of significant paving or structures were moved a min. of 65' from the edge of the creek**
- **Removal of a portion of Ash Street and the addition of a park drop off**
- **Plan retains existing park amenities:**
 - **Basketball**
 - **Open turf area**
 - **Children & tot playground**
 - **Picnic space**
 - **Walking Path**
- **New Park amenities include:**
 - **Restrooms**
 - **Dog park area**
 - **Covered picnic area**
 - **Bocce ball**
 - **Rain gardens**
 - **Expanded picnic & game tables**
 - **Expanded loop walkway**
- **Accessible & additional parking along Lambert**
- **Pump Station to Remain**



Areas of Park Development



Playground Design



Questions & Comments

Project Schedule

- Community Meeting #3 Preliminary Plan Review: Now
- Community Meeting #4 Finalize Park Layout Plan Design: January 2021
- Parks & Recreation Commission Meeting #2 Review Final: Winter 2021
- PRC Meeting #3 – Adoption of Park Improvement Ordinance (PIO): Spring 2021
- Bid Document Preparation: Spring/Summer 2021
- Council to Adopt (PIO) and Approve Contract: Summer 2021
- Project Bidding: Fall 2021
- Construction Begins: Fall/Winter 2021

Project Status

www.cityofpaloalto.org/boulwarepark