



# FIRE STATION #3 PROJECT

## REPORT #9: SEPTEMBER 2018

### Contents

- 1. Project Summary
- 2. Project Activities
- 3. Photos



### MONTHLY PROGRESS REPORT

### Project Team

#### City of Palo Alto

Matt Raschke  
Young Tran  
Bridgette Medved-Perez

#### Shah Kawasaki Architects

Chenglong Tsai  
Olivia Asuncion

#### Nova Partners, Inc.

Hans de Roos  
Frank Arsenault

#### Strawn Construction

Randy Strawn  
Max Munoz  
Billie Harris  
Jake Strawn

# Fire Station #3 Replacement Project

## September 2018

### MONTHLY REPORT

#### **Project Summary**

Fire Station #3 was originally constructed in 1948 as a wood-framed structure located on the northwest corner of Newell Road and Embarcadero Road (799 Embarcadero Road) in Palo Alto, CA. The existing Fire Station will be demolished and replaced with a new, ground-up 6,663 SF two-story Fire Station meeting the requirements of the Essential Services Buildings Seismic Safety Act (ESBSSA; 1986). Shah Kawasaki Architects of Oakland provided the architectural and engineering design for the project which was approved by the City of Palo Alto Architectural Review Board on March 2, 2017.

The construction phase of the project began with bidding and subsequent City Council approval of the construction contract on November 13, 2017. The work will be performed by Strawn Construction via the contract signed and executed on December 21, 2017. Construction began on January 8, 2018. The project is scheduled to be completed in January 2019.

#### **September 2018 Activities**

Strawn Construction continued construction activities in September 2018 with the following activities completed this month:

- Continued protection of the new slab using mirafi and OSB.
- Structural wood framing and sheathing of the first and second story continued.
- Casework and Solar Panel blocking was installed.
- Finished the structural wood framing of the first and second story.
- M-E-P rough-in commenced.
- Sprinkler rough-in commenced.
- Preparation of the site for the CMU wall foundation install.
- Continued tree protection maintenance and watering of existing trees.

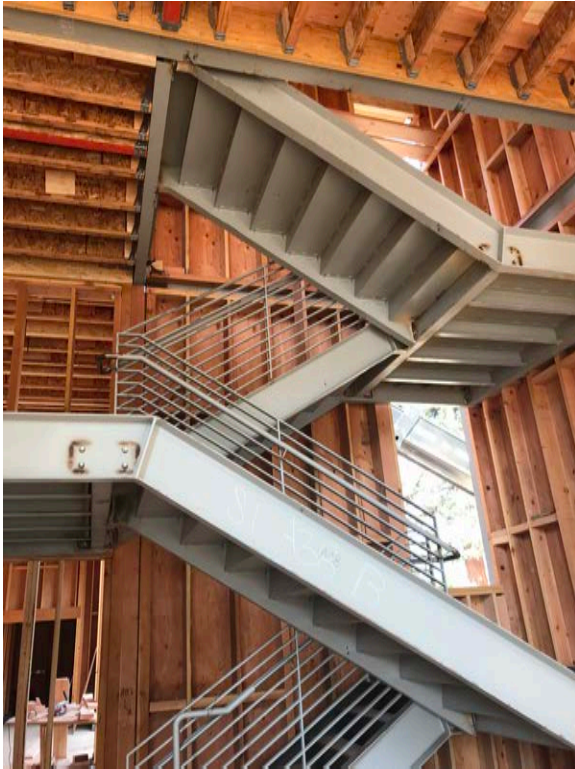
## **Upcoming Activities**

During October-November 2018, Strawn Construction expects to perform the following activities:

- M-E-P rough-in will finish.
- Fire Sprinkler rough-in will be completed.
- CMU wall foundation will be installed.
- Installation of the trash enclosure slab rebar reinforcement and footing forms.
- Placement of the concrete for the trash enclosure slab.
- Install of the Building Envelope waterproofing will commence.
- Roofing install will commence.
- Install of CMU Block wall.
- Install of Metal railing guardrails.
- Underground utilities will re-commence.
- Grading for the new retention basins.
- Managing tree protection and watering as needed.
- SWPPP management will continue during the fall and winter seasons.

September 2018

## Construction Photos



Stair #1 in the watch room.



MEP rough-in at the Apparatus Bay.

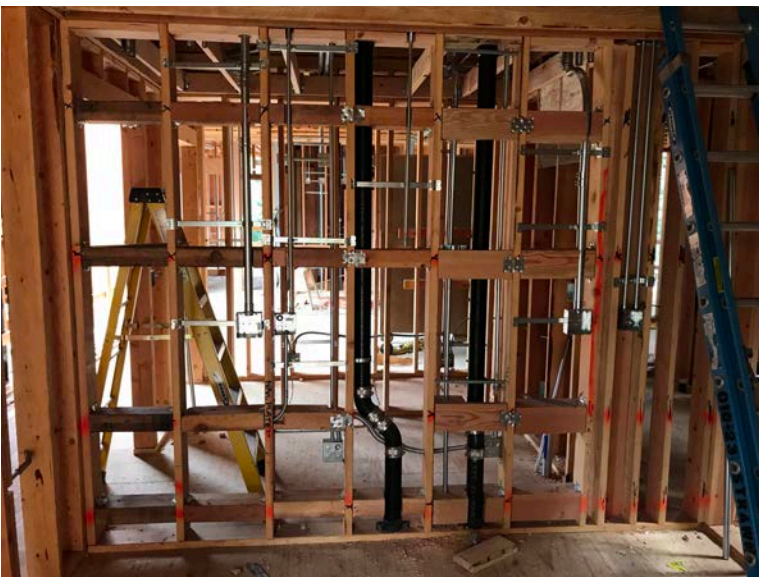


September 2018

## Construction Photos



Second Story interior MEP rough-in.



Interior MEP rough-in.

September 2018

## Construction Photos



Second Story Balcony Framing.