



CITY OF  
**PALO  
ALTO**

# Public Safety Building (PSB)



MONTHLY REPORT 07

OCTOBER 2021

PREPARED BY NOVA PARTNERS, INC.

# Project Information

City of Palo Alto  
Public Safety Building

Architect  
RossDrulisCusenbery

General Contractor  
Swinerton Builders

Construction  
Manager  
Nova Partners

The Public Safety Building (PSB) is a new three-story police station, fire administration, and emergency communications and operations facility. The PSB will be located on an existing City-owned parking lot at 250 Sherman Ave. The new PSB includes two full-block subterranean floors of secure police and staff parking and makes accommodation for a site utility yard, a public plaza, a 135ft communications tower and exterior site buildings.

The primary goal of this project is to create a state-of-the-art facility that brings the City's public safety departments together in a structure which meets current building codes and standards, including the Essential Services Buildings Seismic Safety Act, while serving the public's needs as a civic focal point.

The new PSB project consists of a ballistically rated exterior, coupled with technology-heavy communications systems and sufficient back-up power to allow the building to function in the event of an emergency. Other features include:

- Public plaza and main entry on Birch Street
- Multi-purpose training room and meeting space
- Secure operations yard with large public safety vehicle parking
- A water exclusionary shoring system ("cut-off wall") to minimize groundwater pumping during construction
- Connection to PV panels on California Avenue Parking Garage provides clean energy

The construction contract was awarded to Swinerton Builders and work began on March 1<sup>st</sup> 2021. Completion is anticipated for Summer of 2023.



---

# Activities

## Activities Completed October 2021:

- Ongoing dewatering
- Mass Excavation
- Below-grade utilities installed in Area A
- Certify Building Pad in Area A

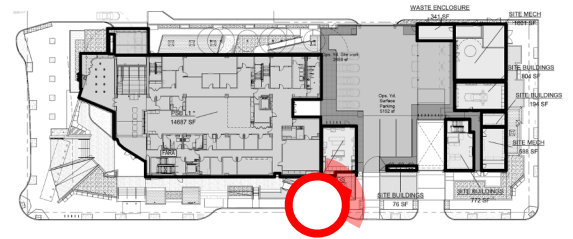
## Upcoming Activities November 2021:

- Ongoing dewatering
- Mass Excavation
- Certify Building Pad
- Place mat foundation rebar.

Completion is anticipated in Summer 2023.



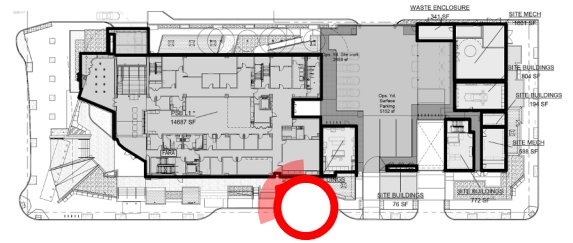
# Project Photos



Mass Excavation ongoing.



# Project Photos



Mud slab in place in Area A.