



# CALIFORNIA AVENUE PARKING GARAGE PROJECT

## REPORT #04: MAY 2019

### Contents

1. Project Summary

2. Project Activities

3. Photos



### MONTHLY PROGRESS REPORT

### Project Team

#### City of Palo Alto

Matt Raschke  
Young Tran  
Colette Chew

#### Watry Design Inc.

Taylor Kim

#### RDC Architects

Mallory Cusenbery  
Michael Ross

#### Nova Partners, Inc.

Jason Luong  
Joe Capps-Jenner  
Hans de Roos

#### Swinerton Builders

Paul Rodriguez  
Felipe Carvajal  
Bryan Newman  
Michelle Hurtado  
Milagros Avila

# California Avenue Garage Project

## May 2019

MONTHLY REPORT

### Project Summary

The California Avenue Parking Garage project is the first phase of the City of Palo Alto's Infrastructure Program in the California Avenue Business District. This project, in conjunction with the Public Safety Building (PSB), will be constructed on the public parking lots, C-7 and C-6 respectively. The parking garage consists of 627 parking stalls located on 6 parking levels; two below grade and four above grade. Due to the loss of parking in the area, modifications will be constructed at the C-6 parking lot accommodating additional parking prior to groundbreaking for the garage project on parking lot C-7. The footprint of the garage is approximately 32,700-square-feet and will utilize a water-exclusionary shoring system (cut-off wall) to prevent groundwater interference during excavation and minimize the need for dewatering. The exterior façade of the garage will have a combination of architectural baguettes, ceramic tile, cementitious panels and plaster systems to create an aesthetical addition to the neighborhood.

The work will be performed by Swinerton Builders via the contract signed and executed on January 9, 2019. Construction of the parking garage is anticipated to be completed in late-Summer of 2020.

### May 2019 Activities

Swinerton Builders performed the following construction activities in May 2019:

- Construction fencing around jobsite has been installed.
- Specialized drilling equipment mobilized to the project site.
- Cut-off shoring wall installation commenced around the perimeter of the jobsite.
- Coordination of utility relocation prior and during initial stages of site work.
- Coordination of the AT&T relocation of the main service vault along Birch St.
- Comcast relocated utilities into an in-ground vault along Birch St.

## **Upcoming Activities**

During June 2019 and July 2019, Swinerton Builders expects to perform the following activities:

- Utility tie-ins will be installed on Birch St. and Sherman Ave.
- Completion of cut-off wall and demobilization of drilling equipment.
- Dewatering wells will be drilled, and pumping activities will commence.
- Tieback installation will begin.
- Equipment for mass soil excavation will start to mobilize to the jobsite and soil off haul will begin.

May 2019

Construction Photos



Steel for cut-off wall being installed along Sherman Ave.

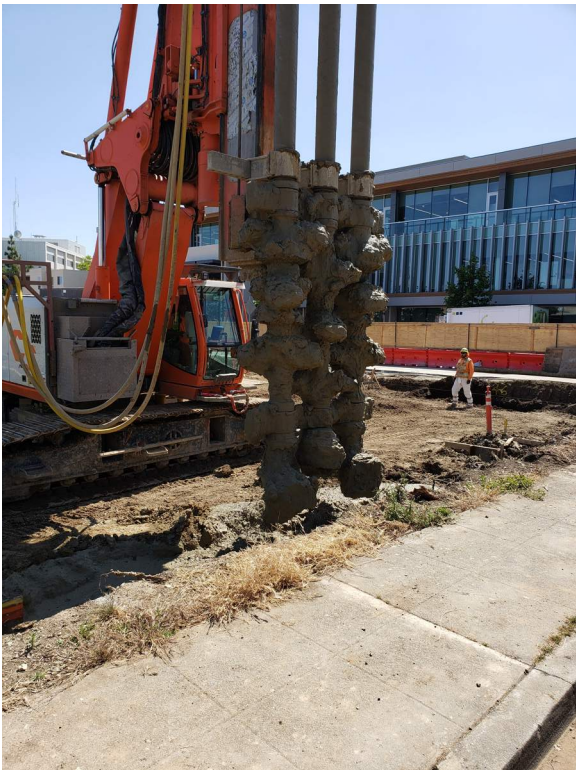


Preparation for utility tie-in at Birch St.





Wood lagging installed along shoring wall.



Cut-off wall drilling activity along Ash St.