



CALIFORNIA AVENUE PARKING GARAGE PROJECT

REPORT #10: DECEMBER 2019

Contents

1. Project Summary
2. Project Activities
3. Photos



MONTHLY PROGRESS REPORT

Project Team

City of Palo Alto

Matt Raschke
Colette Chew

Nova Partners, Inc.

Jason Luong
Joe Capps-Jenner
Hans de Roos

Watry Design Inc.

Taylor Kim

Swinerton Builders

Paul Rodriguez
Felipe Carvajal
Bryan Newman
Enrique Raygoza
Milagros Avila

RDC Architects

Mallory Cusenbery
Michael Ross

California Avenue Garage Project

December 2019

MONTHLY REPORT

Project Summary

The California Avenue Parking Garage project at 350 Sherman Avenue is the first phase of the City of Palo Alto's Infrastructure Program in the California Avenue Business District. This project, in conjunction with the Public Safety Building (PSB), will be constructed on the public parking lots, C-7 and C-6 respectively. The parking garage consists of 627 parking stalls across six parking levels; two below grade and four above grade. Due to the loss of parking in the area, modifications will be constructed at the C-6 parking lot accommodating additional parking prior to groundbreaking for the garage project on parking lot C-7. The footprint of the garage is approximately 32,700-square-feet and will utilize a water-exclusionary shoring system (cut-off wall) to prevent groundwater interference during excavation and minimize the need for dewatering. The exterior façade of the garage will have a combination of architectural baguettes, ceramic tile, cementitious panels and plaster systems to create an aesthetical addition to the neighborhood.

The work will be performed by Swinerton Builders via the contract signed and executed on January 9, 2019. Construction of the parking garage is anticipated to be completed in late-Summer of 2020.

December 2019 Activities

Swinerton Builders performed the following construction activities in December 2019:

- Shotcrete test panel was constructed and nozzle men were qualified.
- First half of the ground level deck was formed, reinforced and poured.
- Level 1 to Level 2 vertical pours (shear walls and columns) commenced.
- Fire Alarm and Metal Stud Wall System deferred packages were approved by the City.
- Two-Way communications system deferred package was submitted to the City for review and approval.

Upcoming Activities

During January 2020 and February 2020, Swinerton Builders expects to perform the following activities:

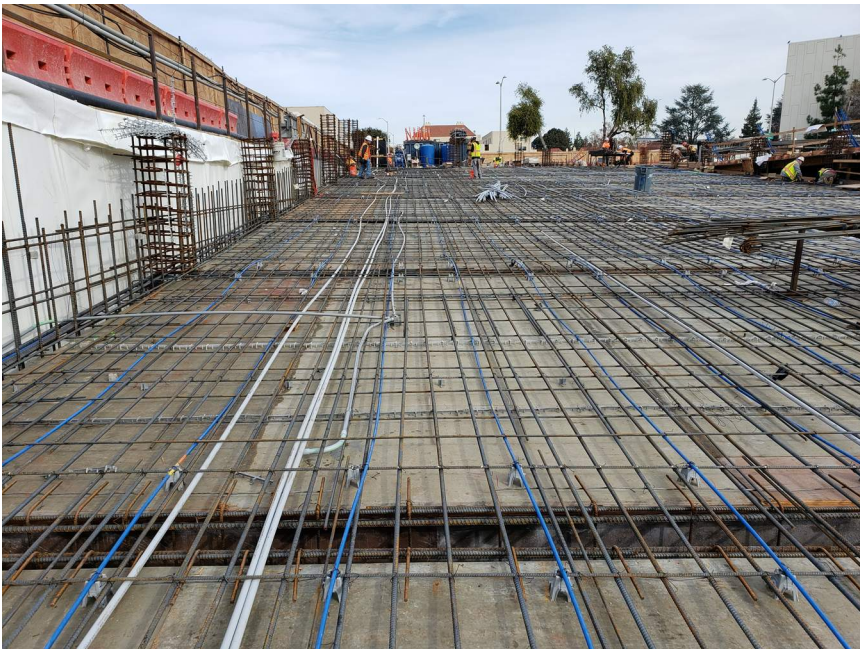
- Second half of the ground level deck will be formed, reinforced and poured.
- CMU activities to commence in the B2 level.
- Shotcrete activities to commence in the B2 level.
- MEPF activities to commence in the B2 level.
- Interior framing activities to commence in electrical rooms.
- “Board form” concrete mockup will be constructed and reviewed by the design team.
- “Board form” cast-in-place wall will be poured along the Sherman Ave. elevation.

December 2019

Construction Photos



Shotcrete test panel being constructed.



Rebar and in-slab utilities being installed at the ramp from ground level to B1.



Ground level columns being formed.



Re-shores in place at the basement levels.