



CITY OF
**PALO
ALTO**

Public Safety Building



MONTHLY REPORT 39

June 2024

PREPARED BY NOVA PARTNERS, INC.

Project Information

City of Palo Alto
Public Safety Building

Architect
RossDrulisCusenbery

General Contractor
Swinerton Builders

Construction Manager
Nova Partners

The Public Safety Building (PSB) is a new three-story police station, fire administration, and emergency communications and operations facility. The PSB will be located on an existing City-owned parking lot at 250 Sherman Ave. The new PSB includes two full-block subterranean floors of secure police and staff parking and makes accommodation for a site utility yard, a public plaza, a 135ft communications tower and exterior site buildings.

The primary goal of this project is to create a state-of-the-art facility that brings the City's public safety departments together in a structure which meets current building codes and standards, including the Essential Services Buildings Seismic Safety Act, while serving the public's needs as a civic focal point.

The new PSB project consists of a ballistically rated exterior, coupled with technology-heavy communications systems and sufficient back-up power to allow the building to function in the event of an emergency. Other features include:

- Public plaza and main entry on Birch Street
- Multi-purpose training room and meeting space
- Secure operations yard with large public safety vehicle parking
- A water exclusionary shoring system ("cut-off wall") to minimize groundwater pumping during construction
- Connection to PV panels on California Avenue Parking Garage provides clean energy

The construction contract was awarded to Swinerton Builders and work began on March 1st 2021. Completion is anticipated for 2024.



Activities

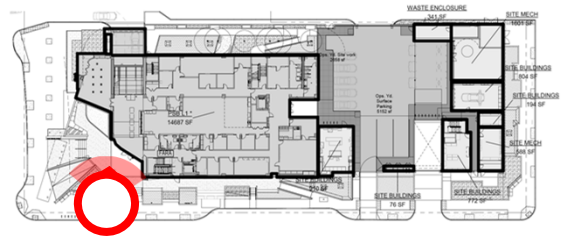
Work Activities June 2024:

- Complete asphalt street striping.
- Complete exterior site work.
- Begin exterior punch list.
- Target Generator Start-Up.
- Target Elevator Temp Use Start-Up.
- Begin artwork installation on exterior building and main lobby.
- Furniture installation starting on L3.
- Begin bump & run units.

Upcoming Activities July 2024:

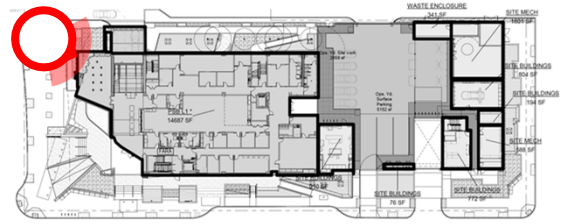
- Correcting exterior punch list items.
- Ongoing Fire Pump start-up.
- Final coat painting.
- L2 Interior millwork.
- Continue L1 lobby finishes.
- Continue final glazing installation.
- Ongoing commissioning.
- Continue furniture installation.

Project Photos



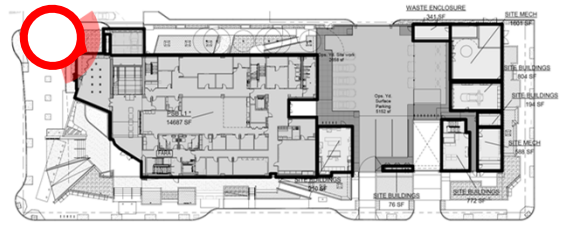
View of building entrance from Birch St. and Sherman Ave.

Project Photos



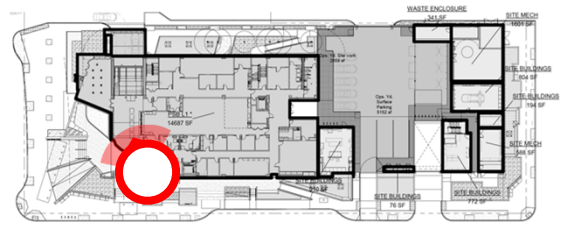
View of Plaza Entry from Birch and Sherman Ave.

Project Photos



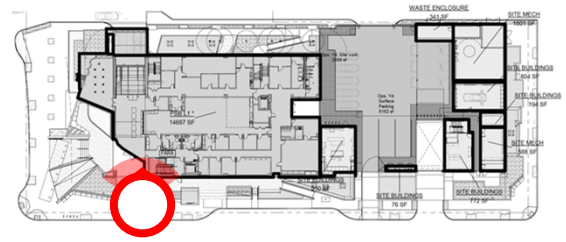
Exterior art close-up from Birch.

Project Photos



Storefront of PSB.

Project Photos

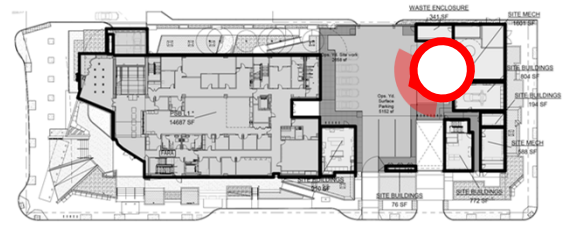


Front entrance Sherman Ave.



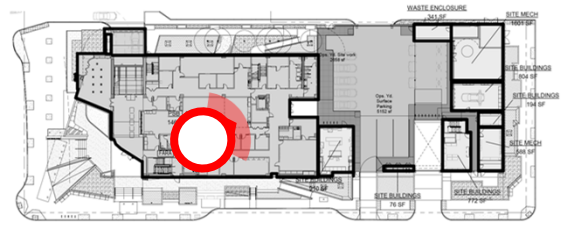
Sherman ramp to building entrance.

Project Photos



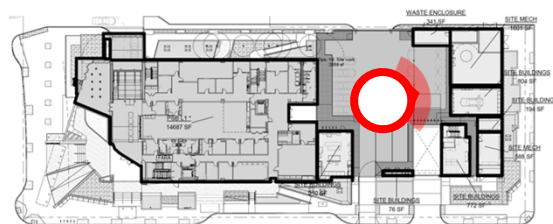
View of Utility Yard with Striping.

Project Photos



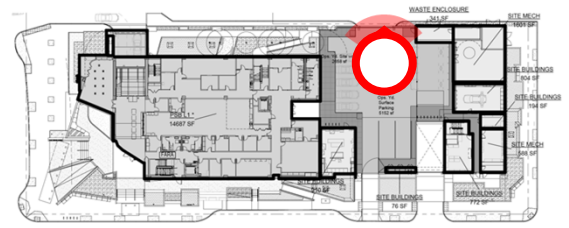
B2 Parking Lot Striping.

Project Photos



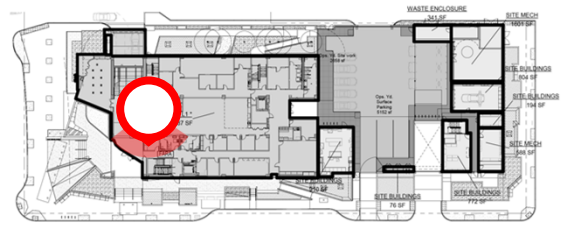
Vehicle Lift

Project Photos



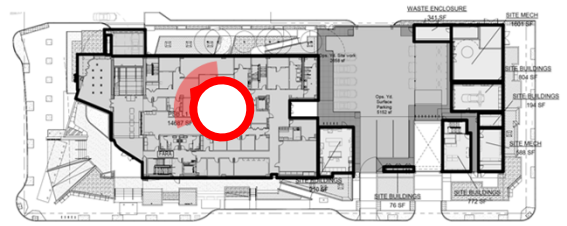
Interior utility yard gate.

Project Photos



Kitchen lockers.

Project Photos



L3 Furniture Install.