



CITY OF
**PALO
ALTO**

Public Safety Building



MONTHLY REPORT 37

May 2024

PREPARED BY NOVA PARTNERS, INC.

Project Information

City of Palo Alto
Public Safety Building

Architect
RossDrulisCusenbery

General Contractor
Swinerton Builders

Construction Manager
Nova Partners

The Public Safety Building (PSB) is a new three-story police station, fire administration, and emergency communications and operations facility. The PSB will be located on an existing City-owned parking lot at 250 Sherman Ave. The new PSB includes two full-block subterranean floors of secure police and staff parking and makes accommodation for a site utility yard, a public plaza, a 135ft communications tower and exterior site buildings.

The primary goal of this project is to create a state-of-the-art facility that brings the City's public safety departments together in a structure which meets current building codes and standards, including the Essential Services Buildings Seismic Safety Act, while serving the public's needs as a civic focal point.

The new PSB project consists of a ballistically rated exterior, coupled with technology-heavy communications systems and sufficient back-up power to allow the building to function in the event of an emergency. Other features include:

- Public plaza and main entry on Birch Street
- Multi-purpose training room and meeting space
- Secure operations yard with large public safety vehicle parking
- A water exclusionary shoring system ("cut-off wall") to minimize groundwater pumping during construction
- Connection to PV panels on California Avenue Parking Garage provides clean energy

The construction contract was awarded to Swinerton Builders and work began on March 1st 2021. Completion is anticipated for 2024.



Activities

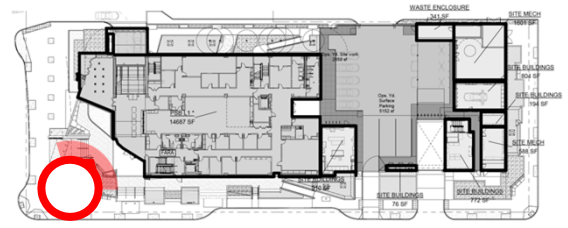
Work Activities April 2024:

- Birch St. flatwork installation and curb and gutter on Sherman Ave.
- Asphalt deep plug installation on Park, Sherman, Birch, and Jacaranda.
- Driveway installation.
- Exterior paver installation.
- Exterior tile installation on site work.
- Exterior bike racks and precast seats begin installation.
- Millwork installation.
- Stair railing installation.
- Acoustical ceiling installation.
- Atrium Cover Art Installed
- Coiling Door installation.
- Utility Yard building finishes.
- Emergency Electrical Roof Unit Installation.
- Live Network in the building completed.

Upcoming Activities May 2024:

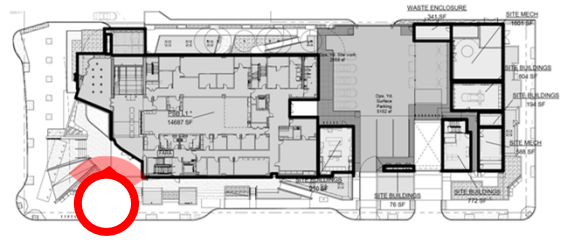
- Begin asphalt grind & overlay for Jacaranda and Sherman Ave.
- Begin street striping.
- Begin exterior caulking.
- Continue installing electrical fixtures.
- Install HVAC finishes.
- Install flooring finishes.
- Install interior glass at offices.

Project Photos



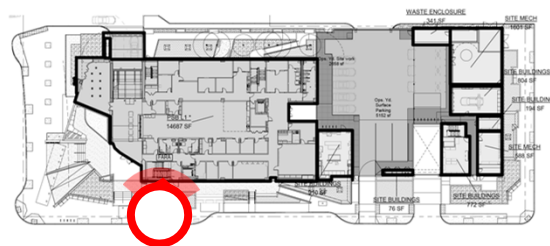
View of building entrance from Birch St. and Sherman Ave.

Project Photos



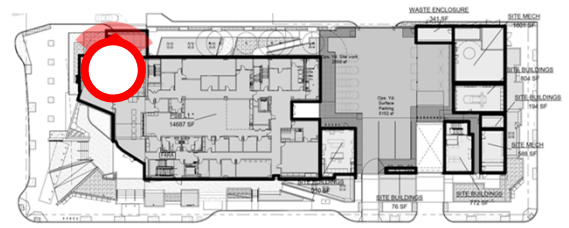
View of building entrance from Birch St. and Sherman Ave.

Project Photos



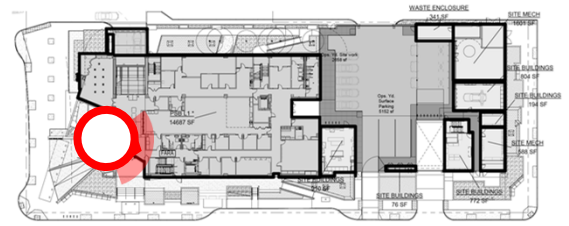
View of Plaza Entry from building storefront on Sherman Ave

Project Photos



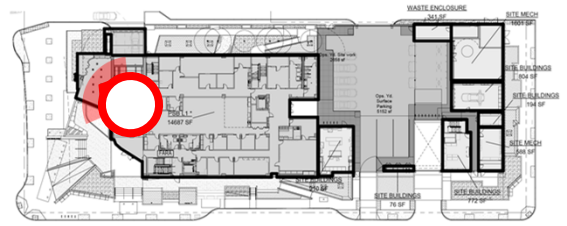
Jacaranda Driveway repair.

Project Photos



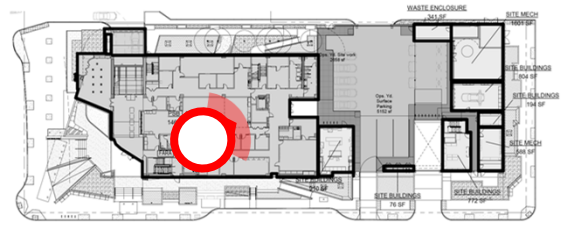
Public Lobby Counter.

Project Photos



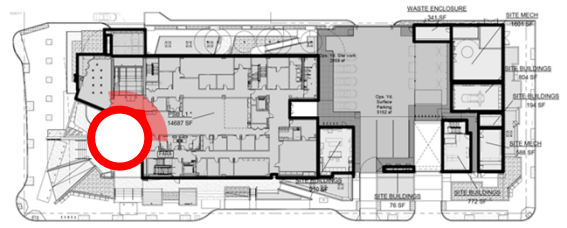
View of Multipurpose Room on L1.

Project Photos



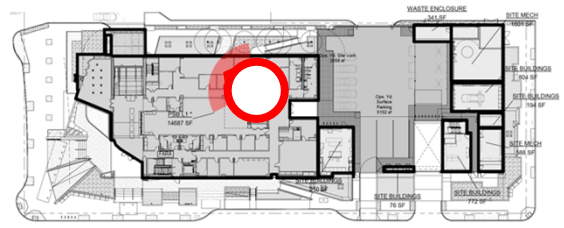
Atrium Coverwall.

Project Photos



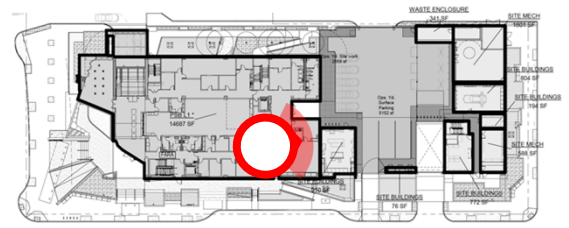
L3 Open Office.

Project Photos



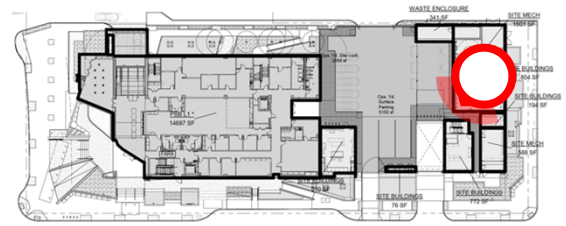
L3 EOC Room

Project Photos



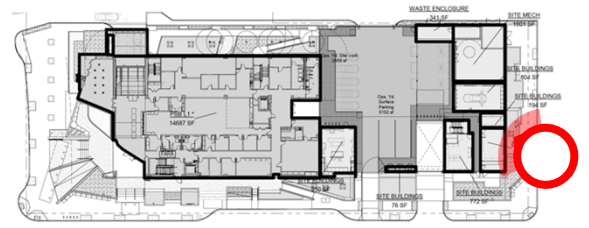
View of emergency Electrical Roof Unit Installation.

Project Photos



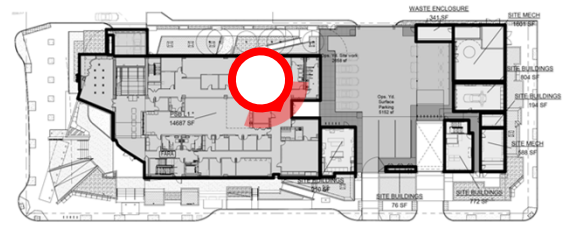
Utility Yard Coil Door Installation.

Project Photos



Park Ave Site Work.

Project Photos



Gym Ceiling.