



CITY OF
**PALO
ALTO**

Public Safety Building



MONTHLY REPORT 34

January 2024

PREPARED BY NOVA PARTNERS, INC.

Project Information

City of Palo Alto
Public Safety Building

Architect
RossDrulisCusenbery

General Contractor
Swinerton Builders

Construction Manager
Nova Partners

The Public Safety Building (PSB) is a new three-story police station, fire administration, and emergency communications and operations facility. The PSB will be located on an existing City-owned parking lot at 250 Sherman Ave. The new PSB includes two full-block subterranean floors of secure police and staff parking and makes accommodation for a site utility yard, a public plaza, a 135ft communications tower and exterior site buildings.

The primary goal of this project is to create a state-of-the-art facility that brings the City's public safety departments together in a structure which meets current building codes and standards, including the Essential Services Buildings Seismic Safety Act, while serving the public's needs as a civic focal point.

The new PSB project consists of a ballistically rated exterior, coupled with technology-heavy communications systems and sufficient back-up power to allow the building to function in the event of an emergency. Other features include:

- Public plaza and main entry on Birch Street
- Multi-purpose training room and meeting space
- Secure operations yard with large public safety vehicle parking
- A water exclusionary shoring system ("cut-off wall") to minimize groundwater pumping during construction
- Connection to PV panels on California Avenue Parking Garage provides clean energy

The construction contract was awarded to Swinerton Builders and work began on March 1st 2021. Completion is anticipated for 2024.



Activities

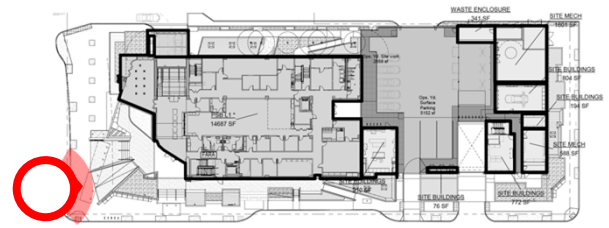
Work Activities January 2024:

- Park Blvd curb and gutter installation.
- Jacaranda Ln driveway installation.
- Irrigation installation on Jacaranda Ln.
- Flatwork installation on Park Blvd. and Jacaranda Ln.
- Continue bathroom tile installation.
- Continue ceiling closure.
- Continue drywall finishes and paint.
- Permanent power to the Electrical Room is targeted for January.
- Continue security ceiling installation in B1 holding cells.

Upcoming Activities February 2024:

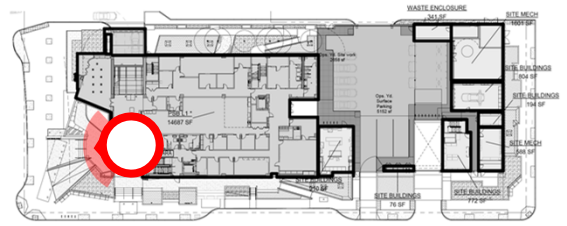
- Birch St. flatwork installation.
- Site Lighting installation on Park Blvd.
- Continue bathroom tile installation.
- Continue interior paint.
- Continue mock-up to B1 holding cell.

Project Photos



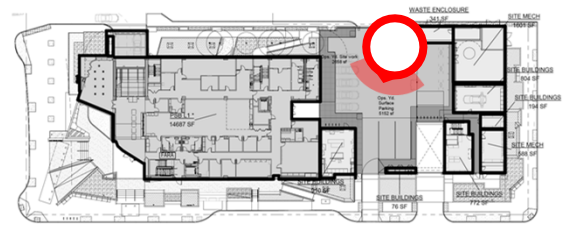
View of building entrance from Birch St.

Project Photos



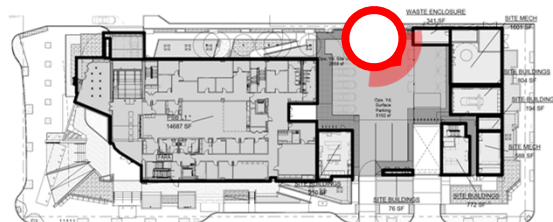
View of Plaza Entry from building storefront.

Project Photos



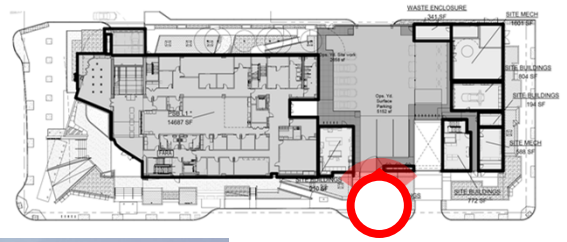
Courtyard view.

Project Photos



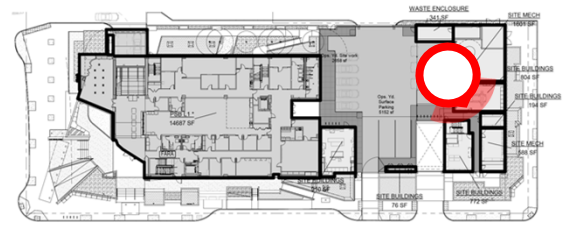
View of utility yard.

Project Photos



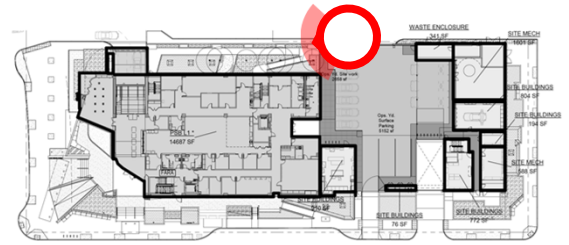
Utility yard entrance flatwork.

Project Photos



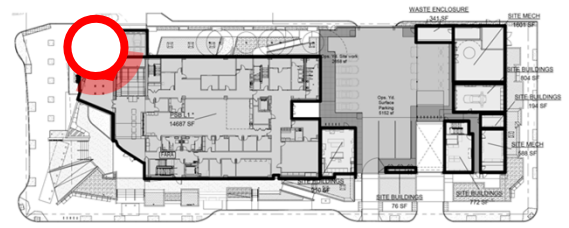
View of utility yard spaces.

Project Photos



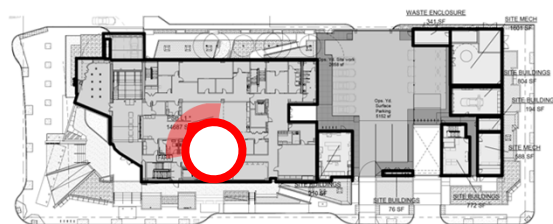
View of yard along
Jacaranda Ln.

Project Photos



Birch St. flatwork and site lighting.

Project Photos

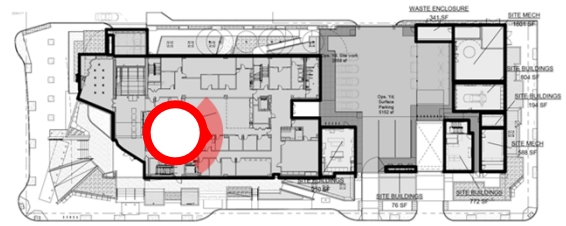


B1 detention entrance doors.



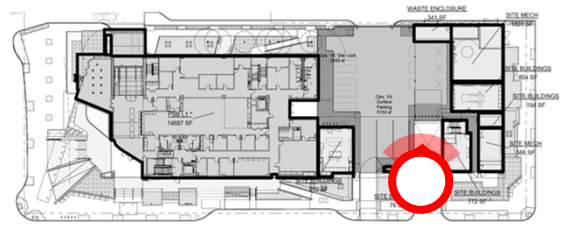
B1 lockers.

Project Photos



B1 coiling door installation.

Project Photos



Garage ramp showing louver installation.