



CITY OF  
**PALO  
ALTO**

# Public Safety Building



MONTHLY REPORT 33

December 2023

PREPARED BY NOVA PARTNERS, INC.

# Project Information

City of Palo Alto  
Public Safety Building

**Architect**  
RossDrulisCusenbery

**General Contractor**  
Swinerton Builders

**Construction Manager**  
Nova Partners

The Public Safety Building (PSB) is a new three-story police station, fire administration, and emergency communications and operations facility. The PSB will be located on an existing City-owned parking lot at 250 Sherman Ave. The new PSB includes two full-block subterranean floors of secure police and staff parking and makes accommodation for a site utility yard, a public plaza, a 135ft communications tower and exterior site buildings.

The primary goal of this project is to create a state-of-the-art facility that brings the City's public safety departments together in a structure which meets current building codes and standards, including the Essential Services Buildings Seismic Safety Act, while serving the public's needs as a civic focal point.

The new PSB project consists of a ballistically rated exterior, coupled with technology-heavy communications systems and sufficient back-up power to allow the building to function in the event of an emergency. Other features include:

- Public plaza and main entry on Birch Street
- Multi-purpose training room and meeting space
- Secure operations yard with large public safety vehicle parking
- A water exclusionary shoring system ("cut-off wall") to minimize groundwater pumping during construction
- Connection to PV panels on California Avenue Parking Garage provides clean energy

The construction contract was awarded to Swinerton Builders and work began on March 1<sup>st</sup> 2021. Completion is anticipated for 2024.



# Activities

## Work Activities December 2023:

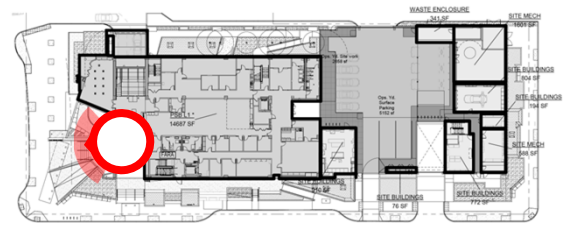
- Plaza planter wall installation.
- Curb and Gutter installation along Park and Jacaranda.
- Utility Yard curb installation.
- Completed silva cell installation and backfill on Birch St.
- Service yard sidewalk curb installation.
- Continue drywall finishes L3 & L2.
- Metal casework installation.
- MEP Adjustments for clearances.
- Ceiling closures are progressing.
- Began security ceiling installation in B1 holding cells.

## Upcoming Activities January 2024:

- Park Street curb and gutter installation.
- Jacaranda driveway installation.
- Irrigation installation on Jacaranda.
- Landscaping installation on Jacaranda.
- Continue bathroom tile installation.
- Begin Soil Cell Installation & Backfill on Sherman Ave.
- Continue ceiling closure.
- Continue drywall finishes.
- Permanent power to the Electrical Room is targeted for January.
- Continue security ceiling installation in B1 holding cells.



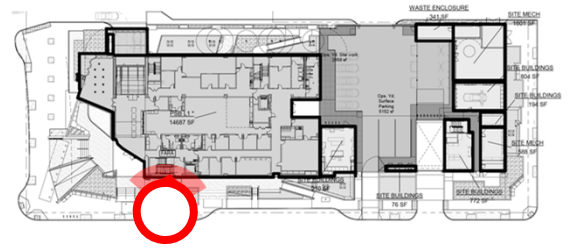
# Project Photos



View of Plaza Formwork from Building Entrance.

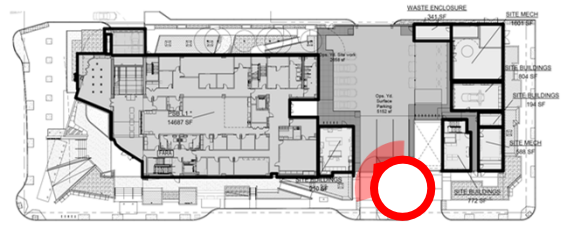


# Project Photos



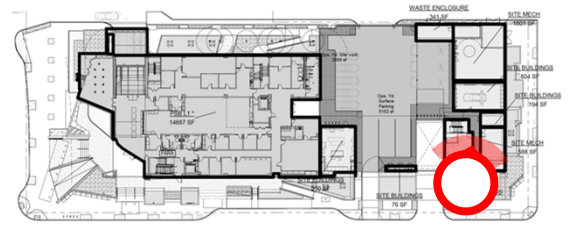
View of Plaza Entry from Sherman Ave.

# Project Photos



Building View of Sherman Ave.

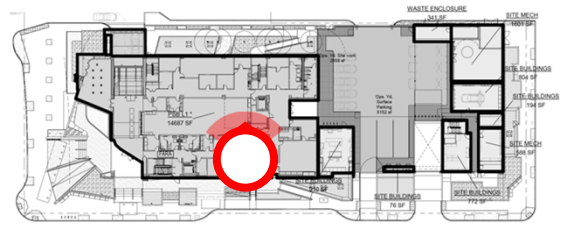
# Project Photos



View from Park Ave and Sherman Ave.

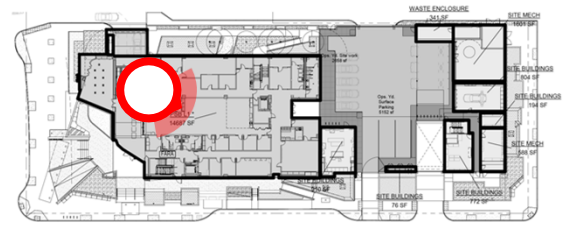


# Project Photos



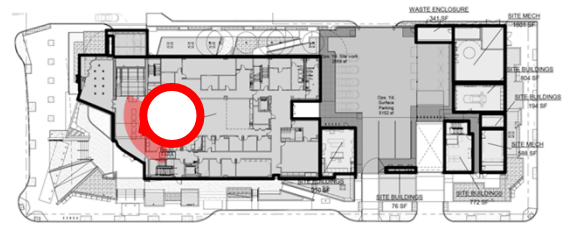
Entry Lobby on B1.

# Project Photos



L1 Open Office.

# Project Photos

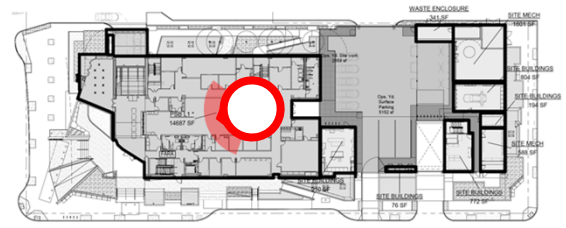


Police Chief and View of Atrium on L3.





# Project Photos



L3 Breakroom and Restricted Stair 3.