



CITY OF
**PALO
ALTO**

Public Safety Building



MONTHLY REPORT 31

October 2023

PREPARED BY NOVA PARTNERS, INC.

Project Information

City of Palo Alto
Public Safety Building

Architect
RossDrulisCusenbery

General Contractor
Swinerton Builders

Construction Manager
Nova Partners

The Public Safety Building (PSB) is a new three-story police station, fire administration, and emergency communications and operations facility. The PSB will be located on an existing City-owned parking lot at 250 Sherman Ave. The new PSB includes two full-block subterranean floors of secure police and staff parking and makes accommodation for a site utility yard, a public plaza, a 135ft communications tower and exterior site buildings.

The primary goal of this project is to create a state-of-the-art facility that brings the City's public safety departments together in a structure which meets current building codes and standards, including the Essential Services Buildings Seismic Safety Act, while serving the public's needs as a civic focal point.

The new PSB project consists of a ballistically rated exterior, coupled with technology-heavy communications systems and sufficient back-up power to allow the building to function in the event of an emergency. Other features include:

- Public plaza and main entry on Birch Street
- Multi-purpose training room and meeting space
- Secure operations yard with large public safety vehicle parking
- A water exclusionary shoring system ("cut-off wall") to minimize groundwater pumping during construction
- Connection to PV panels on California Avenue Parking Garage provides clean energy

The construction contract was awarded to Swinerton Builders and work began on March 1st 2021. Completion is anticipated for 2024.



Activities

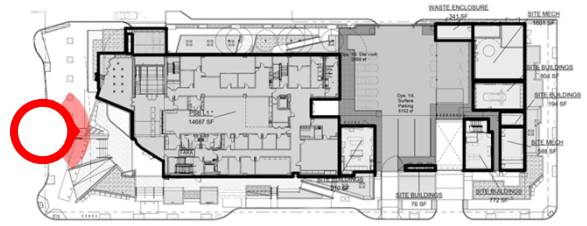
Work Activities October 2023:

- PV Final received at 350 Sherman Ave. Garage [350 Sherman].
- Site wall formwork and rebar on Sherman Ave and Birch St.
- Silva Cell installation and backfill on Birch St.
- FW Tie In on Sherman Ave.
- Interior Painting (B1, B2, Atrium).
- Monopole Tower Installation
- Utility Yard Waterproofing.
- Overhead Ceiling Completion Ongoing.

Upcoming Activities November 2023:

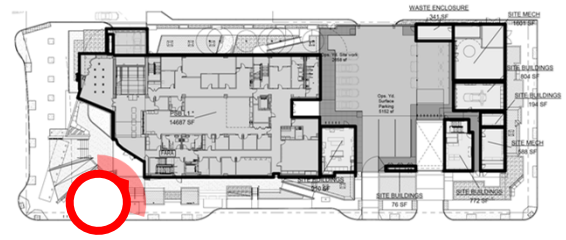
- Begin Irrigation on Park Ave.
- Begin Soil Cell Installation & Backfill on Sherman Ave.
- Continue Interior Painting.
- Continue Ceiling Closeup.
- Roof Top Angle Frame Delivery & Installation.

Project Photos



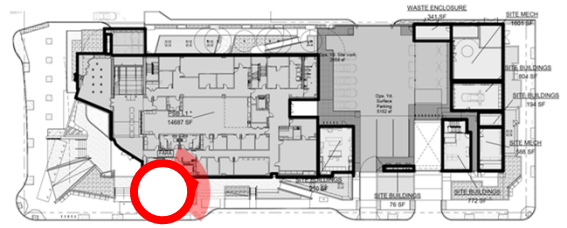
View from 350 Sherman Ave.

Project Photos



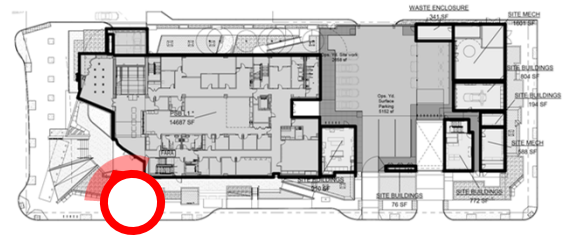
View from Birch St and Sherman Ave.

Project Photos



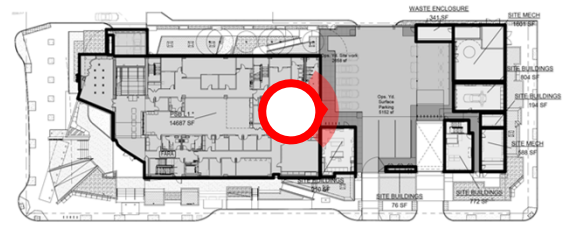
View of site concrete formwork on Sherman Ave.

Project Photos



View of public entry waterproofing and soil cell.

Project Photos

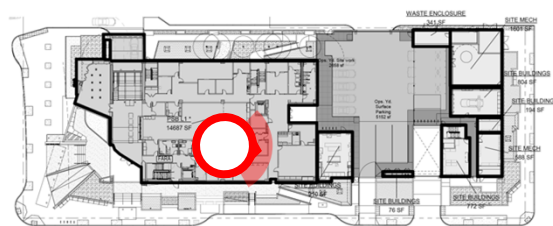


Utility Yard flood testing.



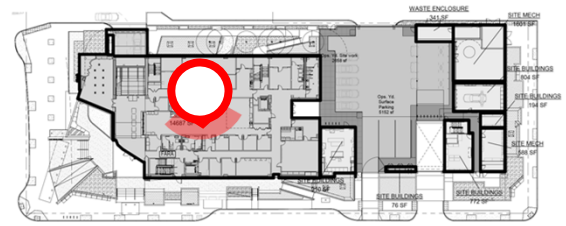
Utility Yard waterproofing.

Project Photos



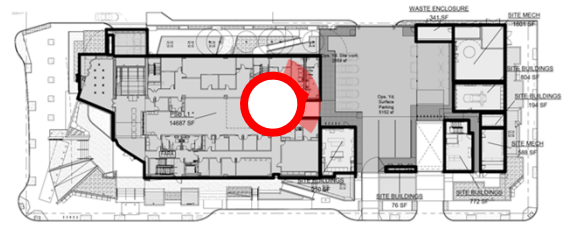
Painting in evidence room.

Project Photos



Sally port painting.

Project Photos



Bathroom stall installation.