



CITY OF
**PALO
ALTO**

Public Safety Building



MONTHLY REPORT 24

March 2023

PREPARED BY NOVA PARTNERS, INC.

Project Information

City of Palo Alto
Public Safety Building

Architect
RossDrulisCusenbery

General Contractor
Swinerton Builders

Construction Manager
Nova Partners

The Public Safety Building (PSB) is a new three-story police station, fire administration, and emergency communications and operations facility. The PSB will be located on an existing City-owned parking lot at 250 Sherman Ave. The new PSB includes two full-block subterranean floors of secure police and staff parking and makes accommodation for a site utility yard, a public plaza, a 135ft communications tower and exterior site buildings.

The primary goal of this project is to create a state-of-the-art facility that brings the City's public safety departments together in a structure which meets current building codes and standards, including the Essential Services Buildings Seismic Safety Act, while serving the public's needs as a civic focal point.

The new PSB project consists of a ballistically rated exterior, coupled with technology-heavy communications systems and sufficient back-up power to allow the building to function in the event of an emergency. Other features include:

- Public plaza and main entry on Birch Street
- Multi-purpose training room and meeting space
- Secure operations yard with large public safety vehicle parking
- A water exclusionary shoring system ('cut-off wall') to minimize groundwater pumping during construction
- Connection to PV panels on California Avenue Parking Garage provides clean energy

The construction contract was awarded to Swinerton Builders and work began on March 1st 2021. Completion is anticipated for late 2023.



Activities

Work Activities March 2023:

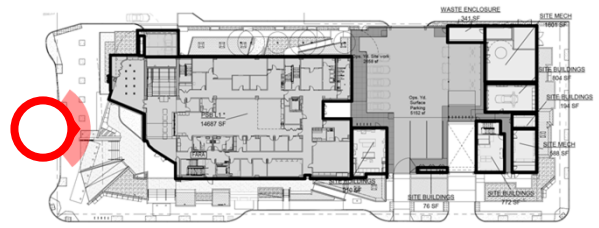
- Continue Mock-Up Installation
- Continue Exterior Fireproofing
- Utility Yard Metal Decking Completed
- Curtainwall Installation Near Completion
- Staff Elevator Near Completion

Upcoming Activities April 2023:

- Continue Mock-Up Installation
- Continue Roofing Build Up Installation
- Complete Exterior Fireproofing
- Roofing Finalization
- Delivery and Installation of CPAU Transformer
- PV Mobilization and Delivery of Materials to Parking Garage [350 Sherman Ave]

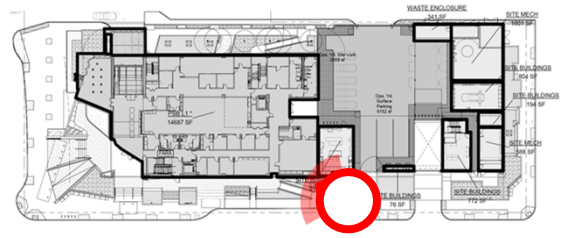
Completion is anticipated in Late 2023.

Project Photos



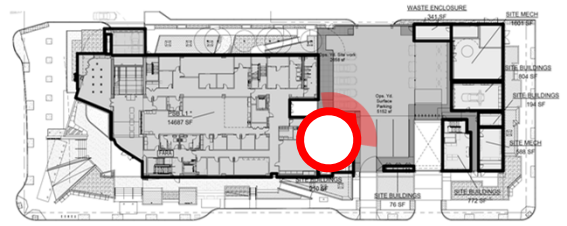
View from Sherman Parking Garage.

Project Photos



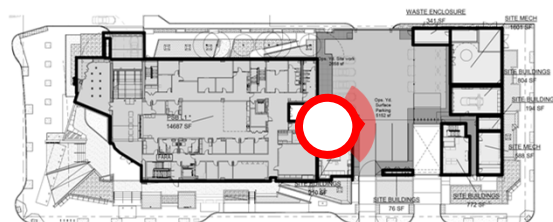
View from South elevation.

Project Photos



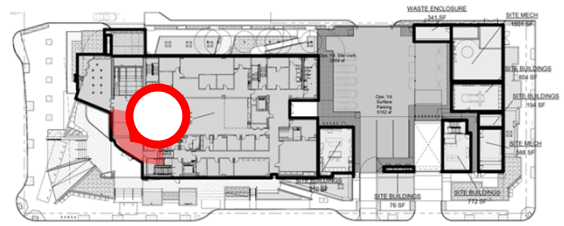
View from Utility Yard

Project Photos



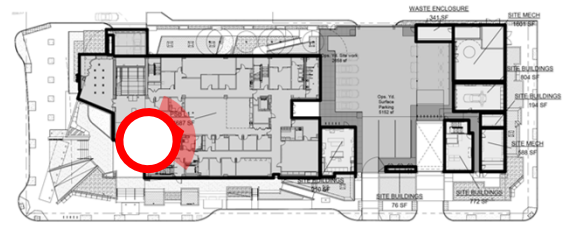
View from Utility Yard of Generator Pad and Plaster Mock-Up.

Project Photos



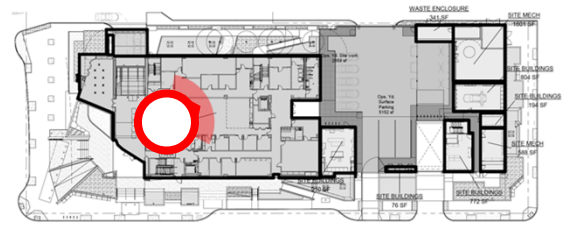
View of lobby from level 2.

Project Photos



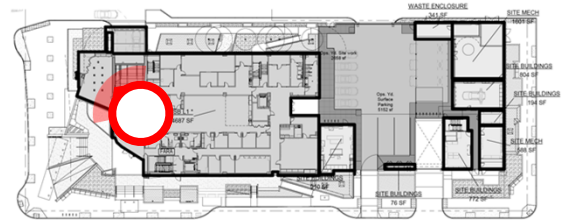
View of open office level 3.

Project Photos



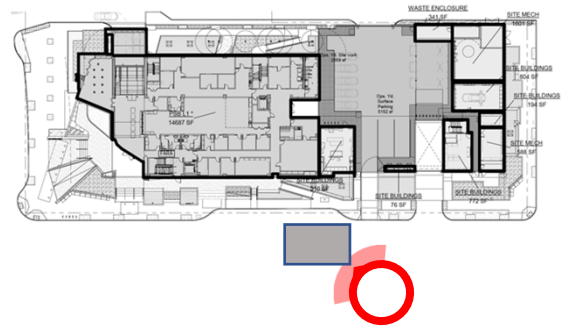
View of skylight
from level 3.

Project Photos



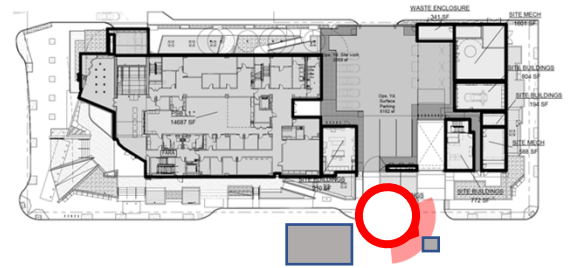
View of lobby from level 2.

Project Photos



View of building mock-Up.

Project Photos



View of site work mock-up.