



CITY OF
**PALO
ALTO**

Public Safety Building



MONTHLY REPORT 21

December 2022

PREPARED BY NOVA PARTNERS, INC.

Project Information

City of Palo Alto
Public Safety Building

Architect
RossDrulisCusenbery

General Contractor
Swinerton Builders

Construction Manager
Nova Partners

The Public Safety Building (PSB) is a new three-story police station, fire administration, and emergency communications and operations facility. The PSB will be located on an existing City-owned parking lot at 250 Sherman Ave. The new PSB includes two full-block subterranean floors of secure police and staff parking and makes accommodation for a site utility yard, a public plaza, a 135ft communications tower and exterior site buildings.

The primary goal of this project is to create a state-of-the-art facility that brings the City's public safety departments together in a structure which meets current building codes and standards, including the Essential Services Buildings Seismic Safety Act, while serving the public's needs as a civic focal point.

The new PSB project consists of a ballistically rated exterior, coupled with technology-heavy communications systems and sufficient back-up power to allow the building to function in the event of an emergency. Other features include:

- Public plaza and main entry on Birch Street
- Multi-purpose training room and meeting space
- Secure operations yard with large public safety vehicle parking
- A water exclusionary shoring system ('cut-off wall') to minimize groundwater pumping during construction
- Connection to PV panels on California Avenue Parking Garage provides clean energy

The construction contract was awarded to Swinerton Builders and work began on March 1st 2021. Completion is anticipated for late 2023.



Activities

Completed Activities December 2022:

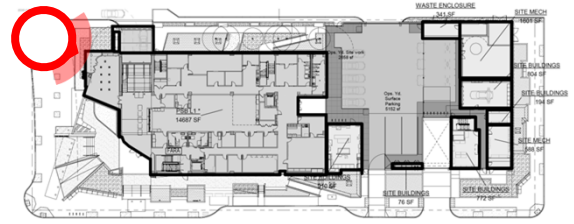
- Continue Mock-Up Installation.
- Continue CMU Wall Installation at the Utility Yard.
- Continue Curtainwall Installation.
- Continue Installation of Tile Veneer at Precast Panels.
- Begin Roofing Build Up and Membrane.
- Begin CMU Wall Installation at Multi-Purpose Room.

Upcoming Activities January 2023:

- Continue Mock-Up Installation.
- Continue Curtainwall Installation.
- Continue Installation of Tile Veneer at Precast Panels.
- Continue Roofing Build Up and Membrane.
- Continue Steel Pile Cutting on Jacaranda.
- Continue Interior Drywall Installation.
- Begin Ceiling Framing Installation.

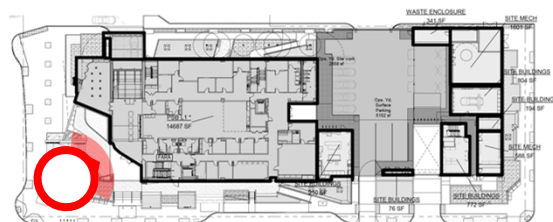
Completion is anticipated in Late 2023.

Project Photos



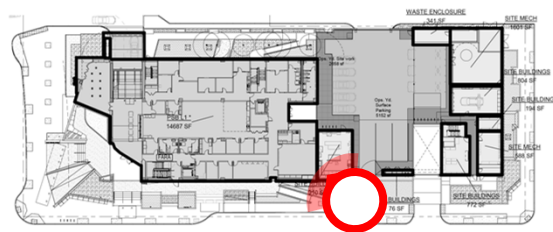
View from North West elevation.

Project Photos



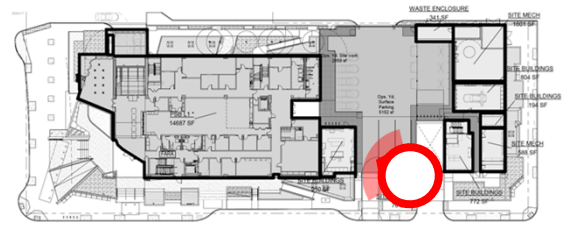
View from South West elevation.

Project Photos



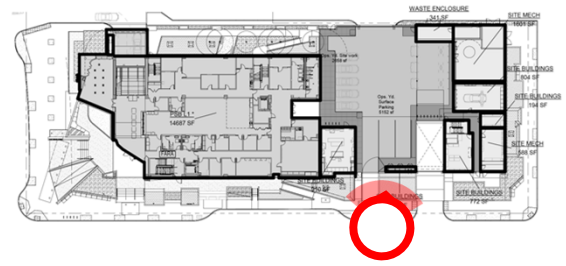
View from South East elevation.

Project Photos



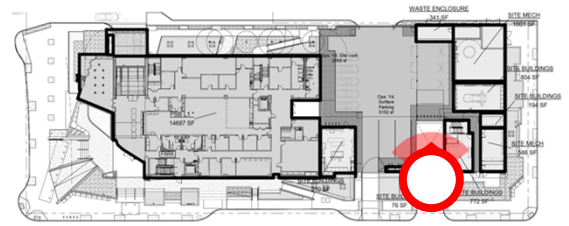
View from South elevation capturing the CMU Walls.

Project Photos



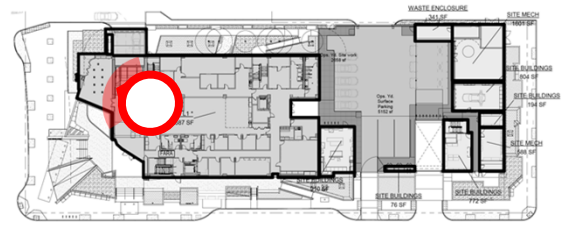
CMU Wall at Utility Yard.

Project Photos



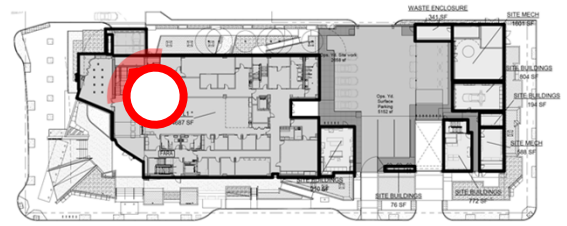
CMU Wall at Utility Yard.

Project Photos



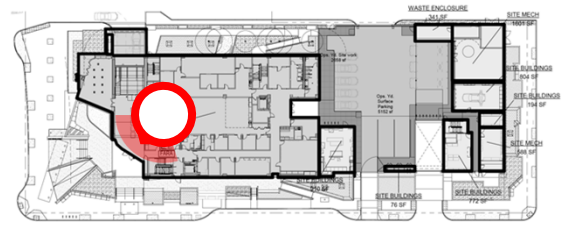
Multi-Purpose Room.

Project Photos



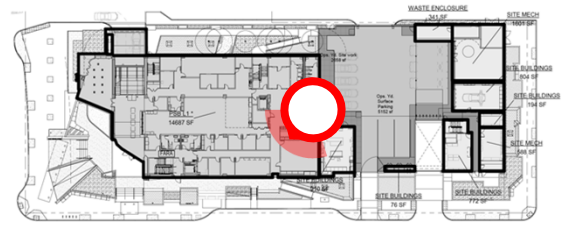
View of stair stringer near Multi-Purpose Room.

Project Photos



Level 3 Window Installation.

Project Photos



Interior Framing Level 1.