



CITY OF
**PALO
ALTO**

Public Safety Building



MONTHLY REPORT 20

November 2022

PREPARED BY NOVA PARTNERS, INC.

Project Information

City of Palo Alto
Public Safety Building

Architect
RossDrulisCusenbery

General Contractor
Swinerton Builders

Construction Manager
Nova Partners

The Public Safety Building (PSB) is a new three-story police station, fire administration, and emergency communications and operations facility. The PSB will be located on an existing City-owned parking lot at 250 Sherman Ave. The new PSB includes two full-block subterranean floors of secure police and staff parking and makes accommodation for a site utility yard, a public plaza, a 135ft communications tower and exterior site buildings.

The primary goal of this project is to create a state-of-the-art facility that brings the City's public safety departments together in a structure which meets current building codes and standards, including the Essential Services Buildings Seismic Safety Act, while serving the public's needs as a civic focal point.

The new PSB project consists of a ballistically rated exterior, coupled with technology-heavy communications systems and sufficient back-up power to allow the building to function in the event of an emergency. Other features include:

- Public plaza and main entry on Birch Street
- Multi-purpose training room and meeting space
- Secure operations yard with large public safety vehicle parking
- A water exclusionary shoring system ('cut-off wall') to minimize groundwater pumping during construction
- Connection to PV panels on California Avenue Parking Garage provides clean energy

The construction contract was awarded to Swinerton Builders and work began on March 1st 2021. Completion is anticipated for late 2023.



Activities

Upcoming Completed November 2022:

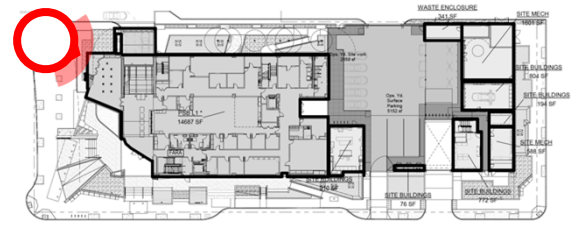
- Continue Mock-Up Installation.
- Continue CMU Wall Installation at the Utility Yard.
- Continue Interior Framing.
- Installation of Tile Veneer at Precast Panels.
- Installation of Curtainwall.

Upcoming Activities December 2022:

- Continue Mock-Up Installation.
- Continue CMU Wall Installation at the Utility Yard.
- Continue Curtainwall Installation.
- Continue Installation of Tile Veneer at Precast Panels.
- Begin Roofing Build Up and Membrane.
- Begin CMU Wall Installation at Multi-Purpose Room.

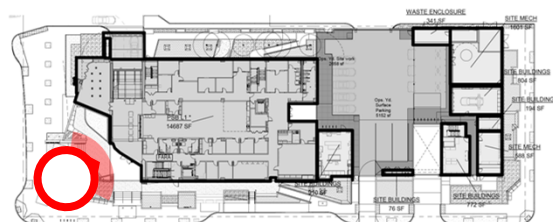
Completion is anticipated in Late 2023.

Project Photos



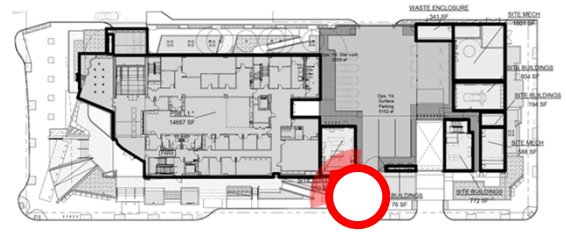
View from North West elevation.

Project Photos



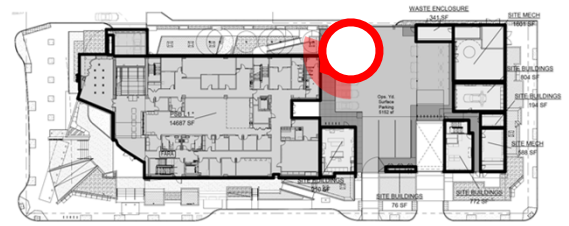
View from South West elevation.

Project Photos



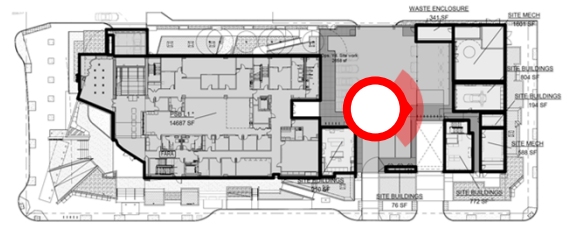
View from South East elevation.

Project Photos



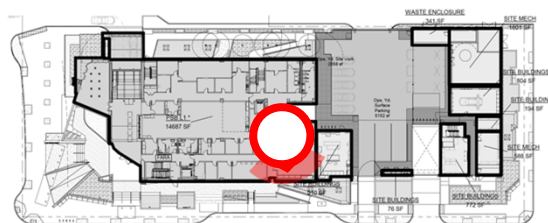
View from North East elevation.

Project Photos



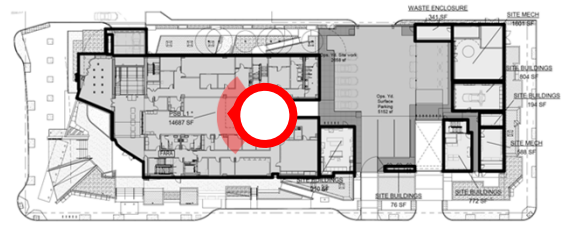
CMU Wall at Utility Yard.

Project Photos



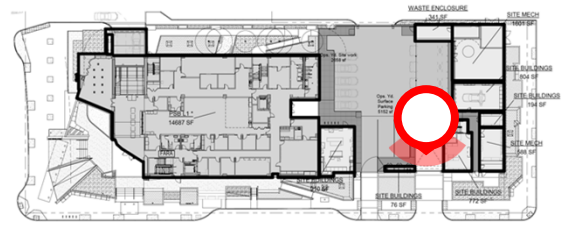
View of Window
Frame install on
Level 3.

Project Photos



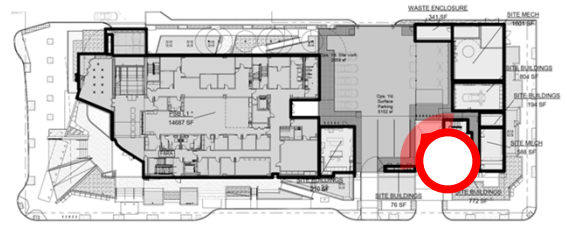
CMU wall at Salley Port.

Project Photos



CMU wall at Garage Driveway.

Project Photos



CMU wall at Garage Driveway.