



CITY OF  
**PALO  
ALTO**

# Public Safety Building



MONTHLY REPORT 19

October 2022

PREPARED BY NOVA PARTNERS, INC.

# Project Information

City of Palo Alto  
Public Safety Building

**Architect**  
RossDrulisCusenbery

**General Contractor**  
Swinerton Builders

**Construction Manager**  
Nova Partners

The Public Safety Building (PSB) is a new three-story police station, fire administration, and emergency communications and operations facility. The PSB will be located on an existing City-owned parking lot at 250 Sherman Ave. The new PSB includes two full-block subterranean floors of secure police and staff parking and makes accommodation for a site utility yard, a public plaza, a 135ft communications tower and exterior site buildings.

The primary goal of this project is to create a state-of-the-art facility that brings the City's public safety departments together in a structure which meets current building codes and standards, including the Essential Services Buildings Seismic Safety Act, while serving the public's needs as a civic focal point.

The new PSB project consists of a ballistically rated exterior, coupled with technology-heavy communications systems and sufficient back-up power to allow the building to function in the event of an emergency. Other features include:

- Public plaza and main entry on Birch Street
- Multi-purpose training room and meeting space
- Secure operations yard with large public safety vehicle parking
- A water exclusionary shoring system ("cut-off wall") to minimize groundwater pumping during construction
- Connection to PV panels on California Avenue Parking Garage provides clean energy

The construction contract was awarded to Swinerton Builders and work began on March 1<sup>st</sup> 2021. Completion is anticipated for late 2023.



# Activities

## Activities Completed October 2022:

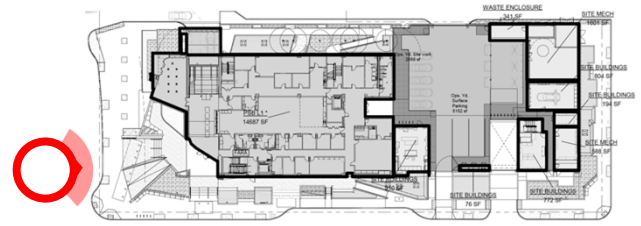
- Ongoing MEP rough-in.
- Ongoing CMU wall installation in utility yard.
- Ongoing elevator framing and rock.
- Ongoing Interior Framing and rock.
- Ongoing above grade waterproofing.
- Ongoing Mock-Up Installation.

## Upcoming Activities November 2022:

- Continue Mock-Up Installation.
- Continue CMU Wall Installation at the Utility Yard.
- Continue Interior Framing.
- Installation of Roofing Build Up and Membrane.
- Installation of Tile Veneer at Precast Panels.

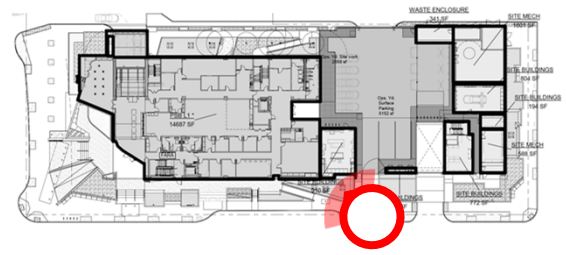
Completion is anticipated in Late 2023.

# Project Photos



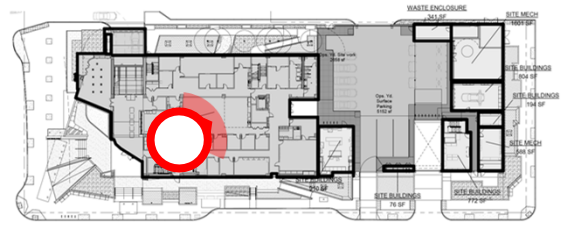
View from Sherman Avenue Parking Garage.

# Project Photos



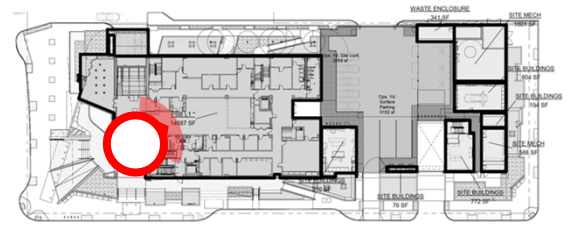
Precast and scaffold install at South-East Elevation.

# Project Photos



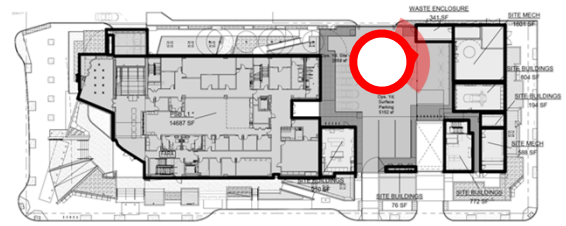
Framing and skylight view from Level 2.

# Project Photos



Skylight view and framing on Level 3.

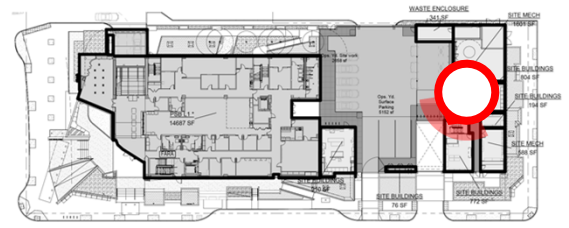
# Project Photos



Basement level framing and one-sided drywall.

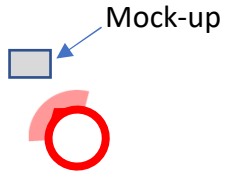
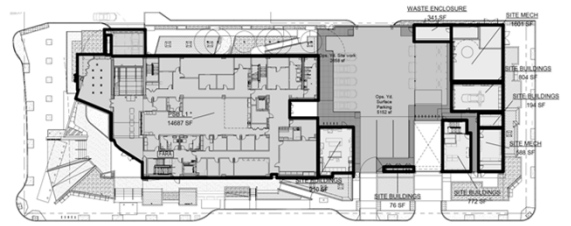


# Project Photos



View of basement ramp into Basement Level 1.

# Project Photos



Continuation of Mock-Up install.

# Project Photos



North-West elevation view.

