



CITY OF  
**PALO  
ALTO**

# Public Safety Building



MONTHLY REPORT 17

August 2022

PREPARED BY NOVA PARTNERS, INC.

# Project Information

City of Palo Alto  
Public Safety Building

**Architect**  
RossDrulisCusenbery

**General Contractor**  
Swinerton Builders

**Construction Manager**  
Nova Partners

The Public Safety Building (PSB) is a new three-story police station, fire administration, and emergency communications and operations facility. The PSB will be located on an existing City-owned parking lot at 250 Sherman Ave. The new PSB includes two full-block subterranean floors of secure police and staff parking and makes accommodation for a site utility yard, a public plaza, a 135ft communications tower and exterior site buildings.

The primary goal of this project is to create a state-of-the-art facility that brings the City's public safety departments together in a structure which meets current building codes and standards, including the Essential Services Buildings Seismic Safety Act, while serving the public's needs as a civic focal point.

The new PSB project consists of a ballistically rated exterior, coupled with technology-heavy communications systems and sufficient back-up power to allow the building to function in the event of an emergency. Other features include:

- Public plaza and main entry on Birch Street
- Multi-purpose training room and meeting space
- Secure operations yard with large public safety vehicle parking
- A water exclusionary shoring system ('cut-off wall') to minimize groundwater pumping during construction
- Connection to PV panels on California Avenue Parking Garage provides clean energy

The construction contract was awarded to Swinerton Builders and work began on March 1<sup>st</sup> 2021. Completion is anticipated for late 2023.



# Activities

## Activities Completed August 2022:

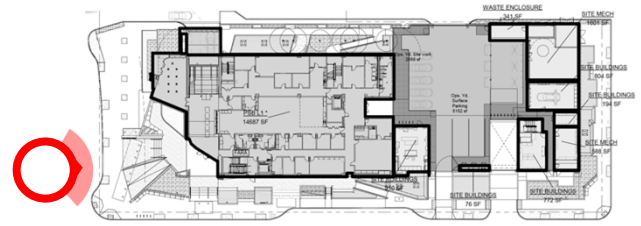
- Ongoing dewatering.
- Complete precast concrete stair installation.
- Complete concrete formwork removal on Levels 1 and 2.
- Ongoing MEP rough-in.
- Ongoing CMU wall installation in utility yard.
- Ongoing precast concrete wall panel installation.
- Ongoing elevator framing.

## Upcoming Activities September 2022:

- Ongoing dewatering.
- Ongoing MEP rough-in.
- Ongoing CMU wall installation in utility yard.
- Ongoing precast concrete wall panel installation.
- Ongoing elevator framing.
- Starting exterior porcelain tile veneer.
- Starting canopy and steel decking at West and South facades.

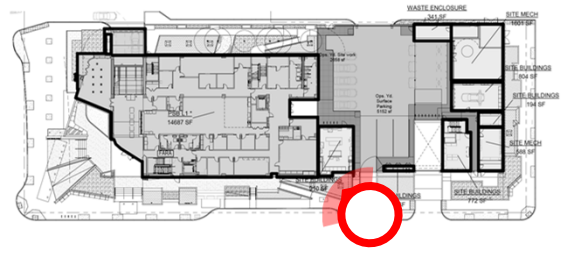
Completion is anticipated in Late 2023.

# Project Photos



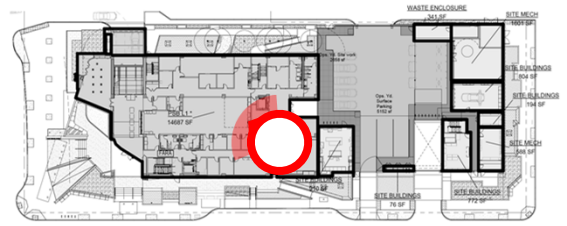
Placement of CMU walls, cement board, and framing.

# Project Photos



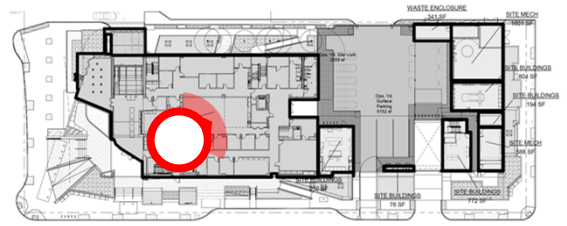
Precast install at South-East Elevation.

# Project Photos



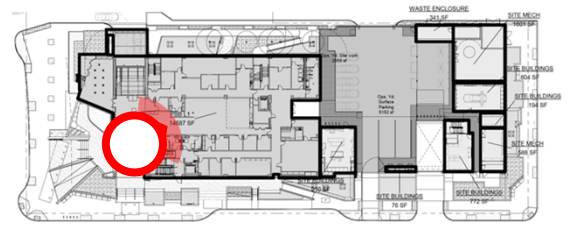
Framing on level 1.

# Project Photos



Framing and MEP inserts on Level 2.

# Project Photos



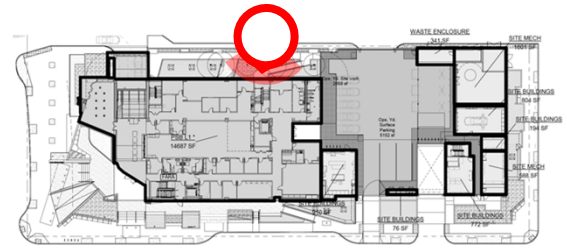
Skylight view and MEP inserts on Level 3.





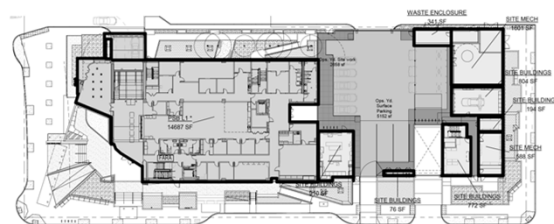


# Project Photos



Closeup view of Precast Panels being installed on the North elevation. View from Jacaranda St.

# Project Photos



Mock-up



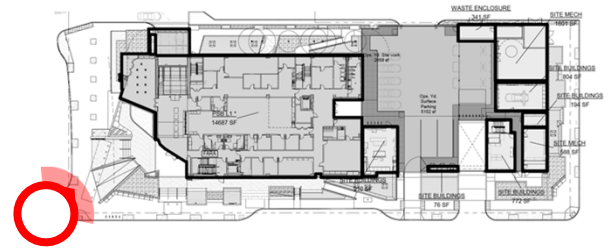
Cement Board,  
miscellaneous metal,  
and precast concrete panels  
installed on the mock-up  
that is adjacent to jobsite.

# Project Photos



Looking up at the main structure from Jacaranda Lane.

# Project Photos



Street view from Sherman Avenue and Birch St.