



CITY OF
**PALO
ALTO**

Public Safety Building



MONTHLY REPORT 15

June 2022

PREPARED BY NOVA PARTNERS, INC.

Project Information

City of Palo Alto
Public Safety Building

Architect
RossDrulisCusenbery

General Contractor
Swinerton Builders

Construction
Manager
Nova Partners

The Public Safety Building (PSB) is a new three-story police station, fire administration, and emergency communications and operations facility. The PSB will be located on an existing City-owned parking lot at 250 Sherman Ave. The new PSB includes two full-block subterranean floors of secure police and staff parking and makes accommodation for a site utility yard, a public plaza, a 135ft communications tower and exterior site buildings.

The primary goal of this project is to create a state-of-the-art facility that brings the City's public safety departments together in a structure which meets current building codes and standards, including the Essential Services Buildings Seismic Safety Act, while serving the public's needs as a civic focal point.

The new PSB project consists of a ballistically rated exterior, coupled with technology-heavy communications systems and sufficient back-up power to allow the building to function in the event of an emergency. Other features include:

- Public plaza and main entry on Birch Street
- Multi-purpose training room and meeting space
- Secure operations yard with large public safety vehicle parking
- A water exclusionary shoring system ("cut-off wall") to minimize groundwater pumping during construction
- Connection to PV panels on California Avenue Parking Garage provides clean energy

The construction contract was awarded to Swinerton Builders and work began on March 1st 2021. Completion is anticipated for Summer of 2023.



Activities

Activities Completed June 2022:

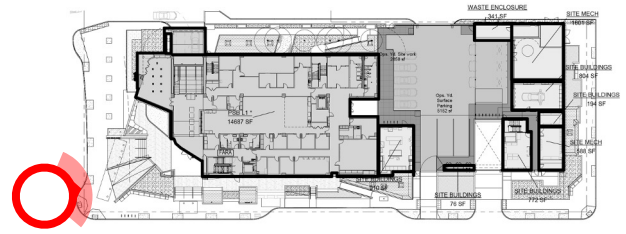
- Ongoing dewatering.
- Completed placement of Level 3 and roof concrete slabs.
- Completed Level 3 vertical element concrete installation.
- Ongoing precast concrete stair installation.
- Ongoing CMU wall installation in Level B2, and Level B1.
- Ongoing MEP rough-in.

Upcoming Activities July 2022:

- Ongoing dewatering.
- Ongoing precast concrete stair installation.
- Ongoing MEP rough-in.
- Complete CMU wall installation in Level B2, and Level B1.
- CMU wall installation in utility yard.
- Complete Penthouse Structural Steel and Decking

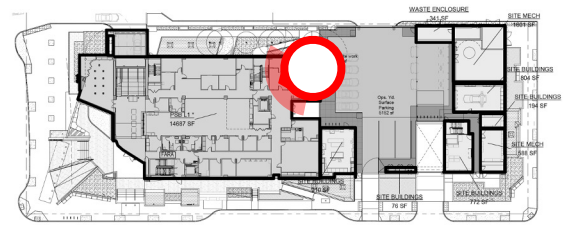
Completion is anticipated in Summer 2023.

Project Photos



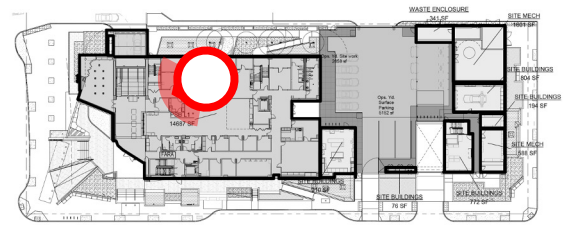
Formwork in place for Level 4 (roof) concrete slab.

Project Photos



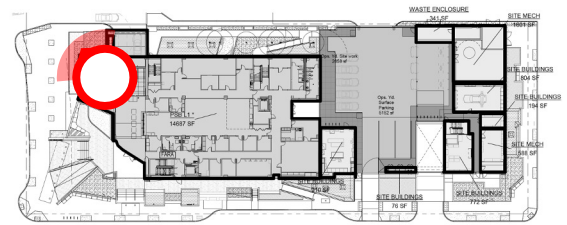
Mechanical ductwork being installed in Level B1.

Project Photos



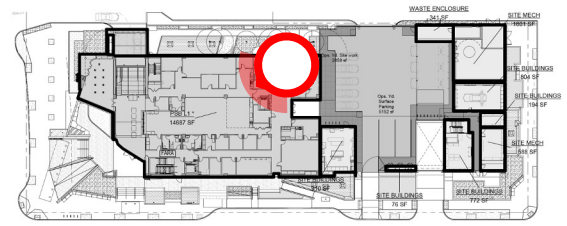
Door frames/thresholds being installed in Level B1.

Project Photos



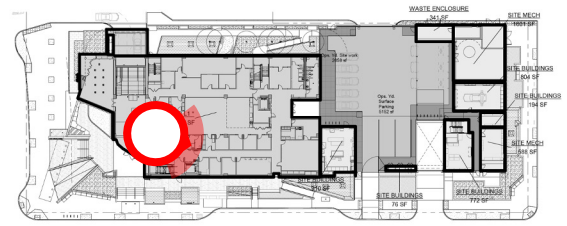
Metal framing and overhead MEP being installed in Level B2.

Project Photos



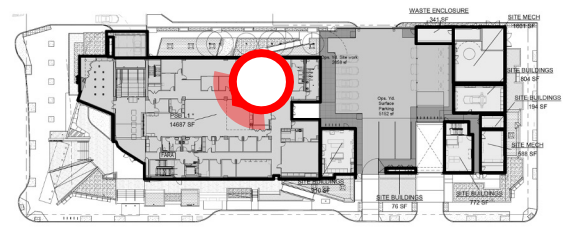
Looking up through the future skylight from Level 1.

Project Photos



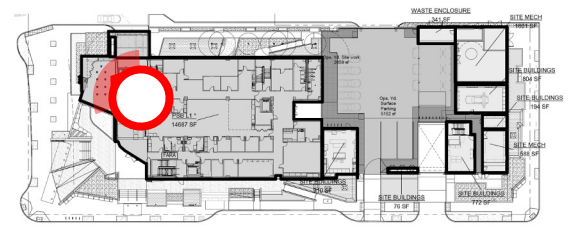
Concrete slab formwork in place on Level 3.

Project Photos



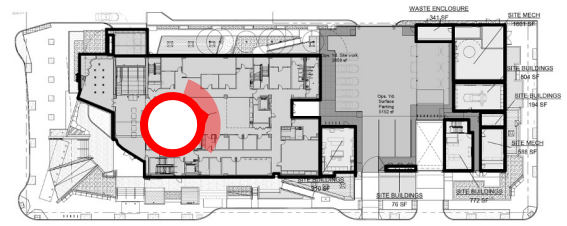
Concrete formwork in place on Level 4 (roof) and looking down through future skylight.

Project Photos



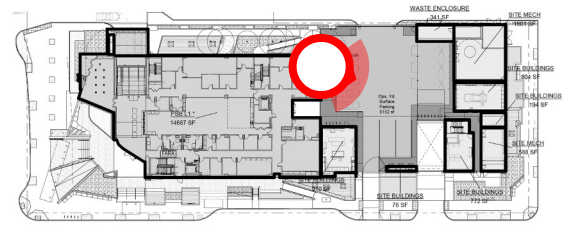
Concrete slab on Level 4 (roof) and concrete formwork in place.

Project Photos



Looking up through future skylight from Level 2.

Project Photos



Looking down at future Utility Yard from Level 3.