

Highway 101 Multi-Use Overcrossing and Adobe Creek Reach Trail

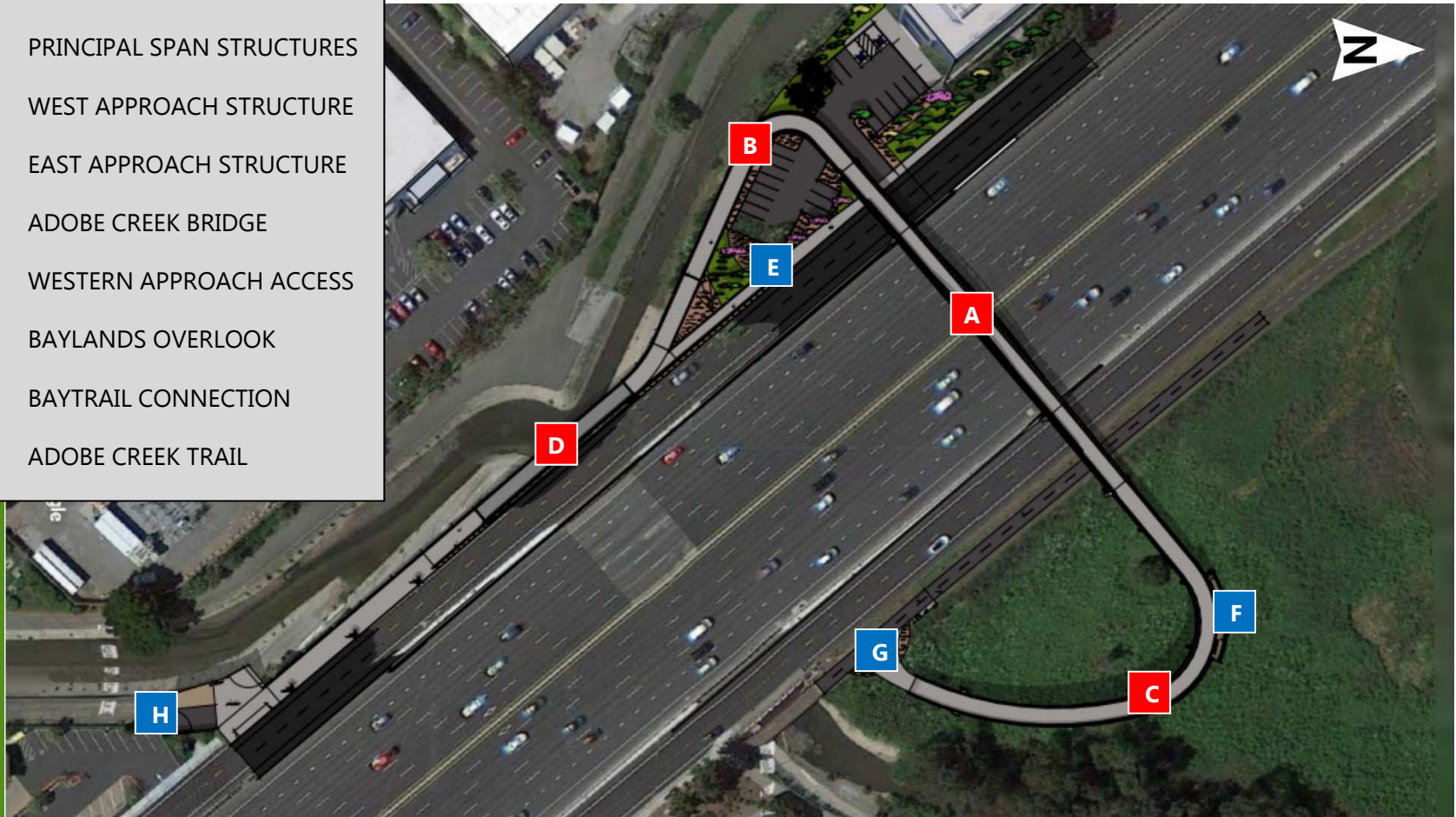
City of Palo Alto

Planning and Transportation Commission

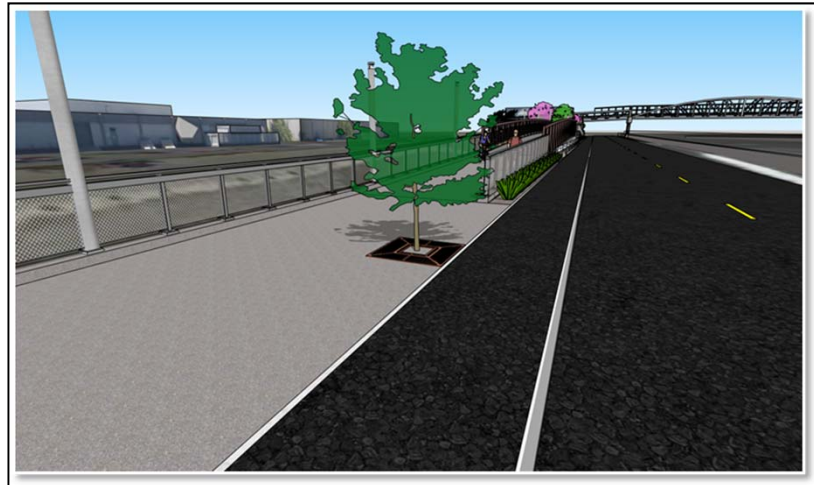
September 13, 2017

Project Elements

- A** PRINCIPAL SPAN STRUCTURES
- B** WEST APPROACH STRUCTURE
- C** EAST APPROACH STRUCTURE
- D** ADOBE CREEK BRIDGE
- E** WESTERN APPROACH ACCESS
- F** BAYLANDS OVERLOOK
- G** BAYTRAIL CONNECTION
- H** ADOBE CREEK TRAIL

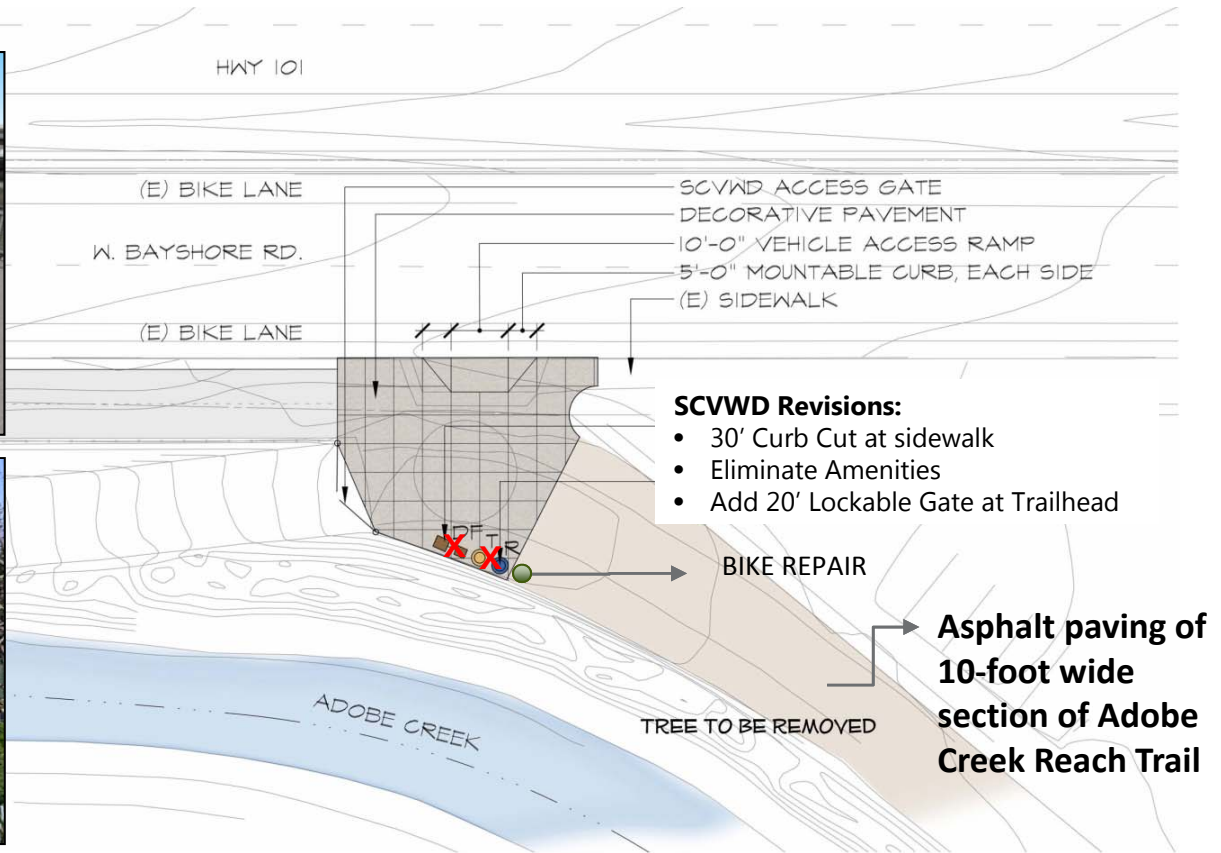


Pedestrian Access Structure



Connection Points / Trailheads

TRAILHEAD AT ADOBE CREEK REACH TRAIL – West Bayshore Road



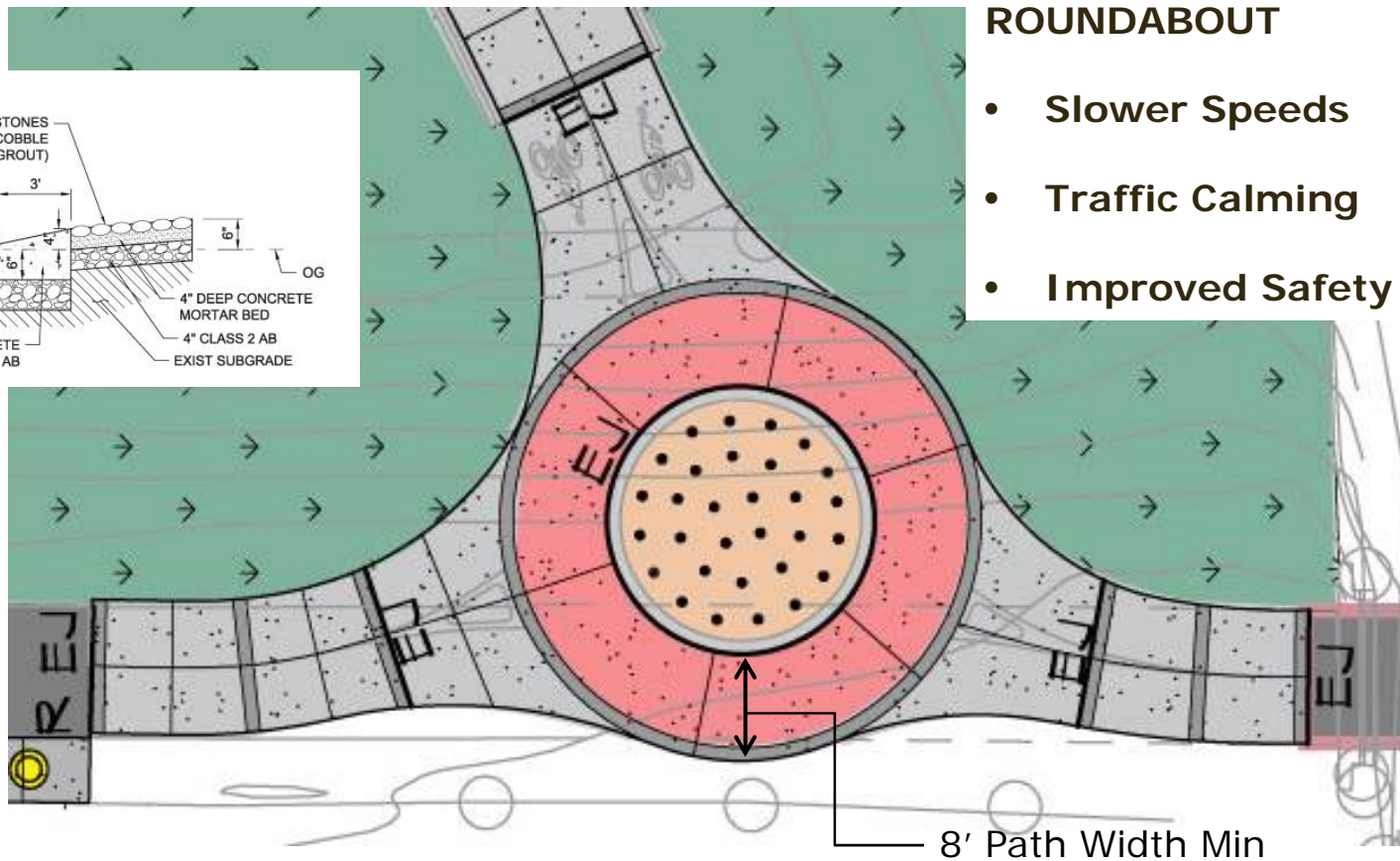
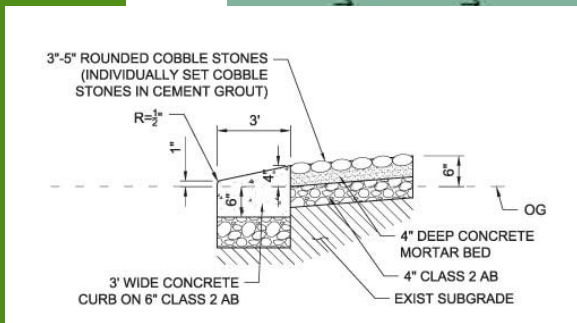
W BAYSHORE TRAILHEAD PLAN

Connection Points / Trailheads

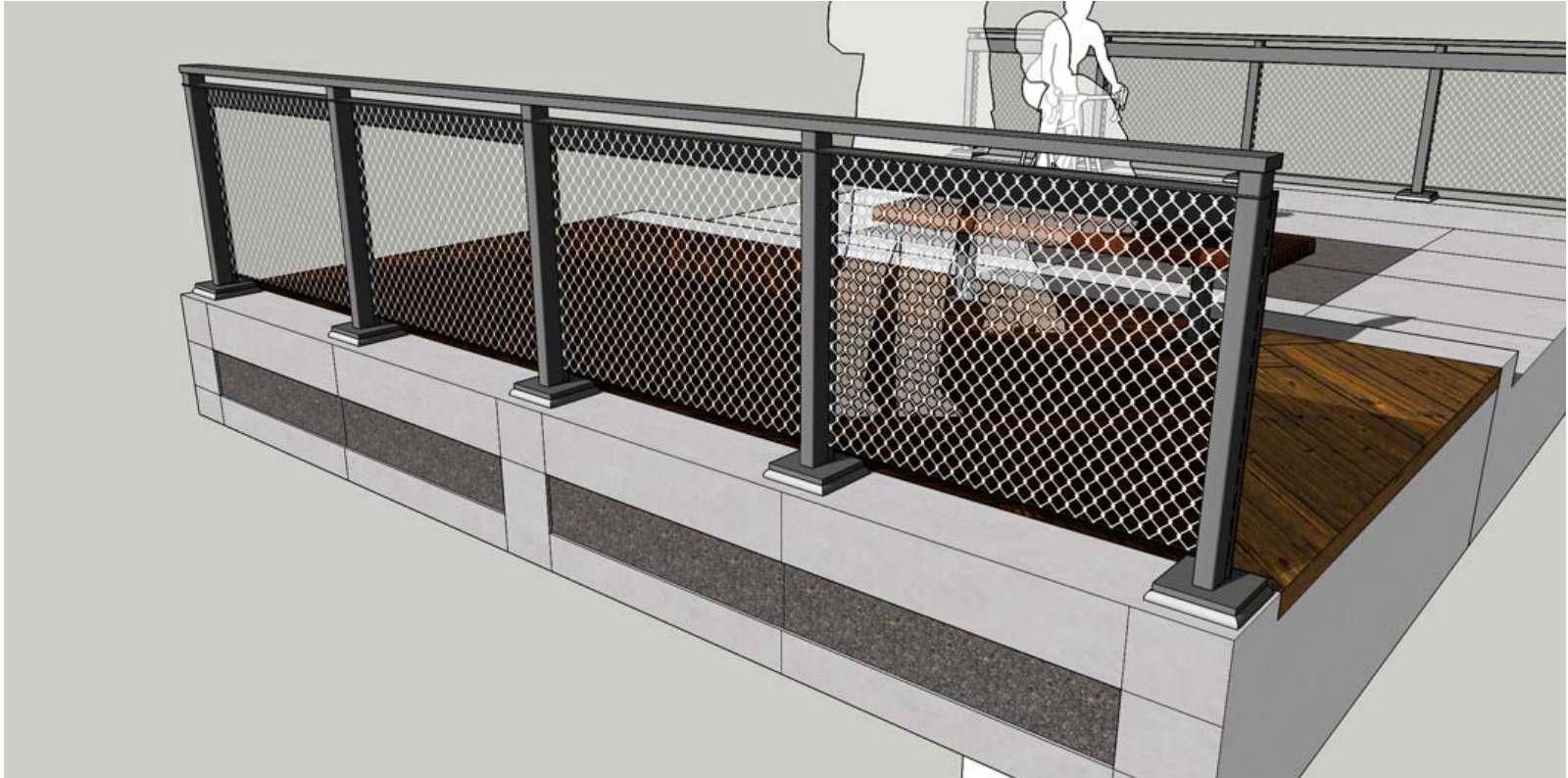
CONNECTION AT BAY TRAIL/EAST BAYSHORE ROAD

ROUNDBABOUT

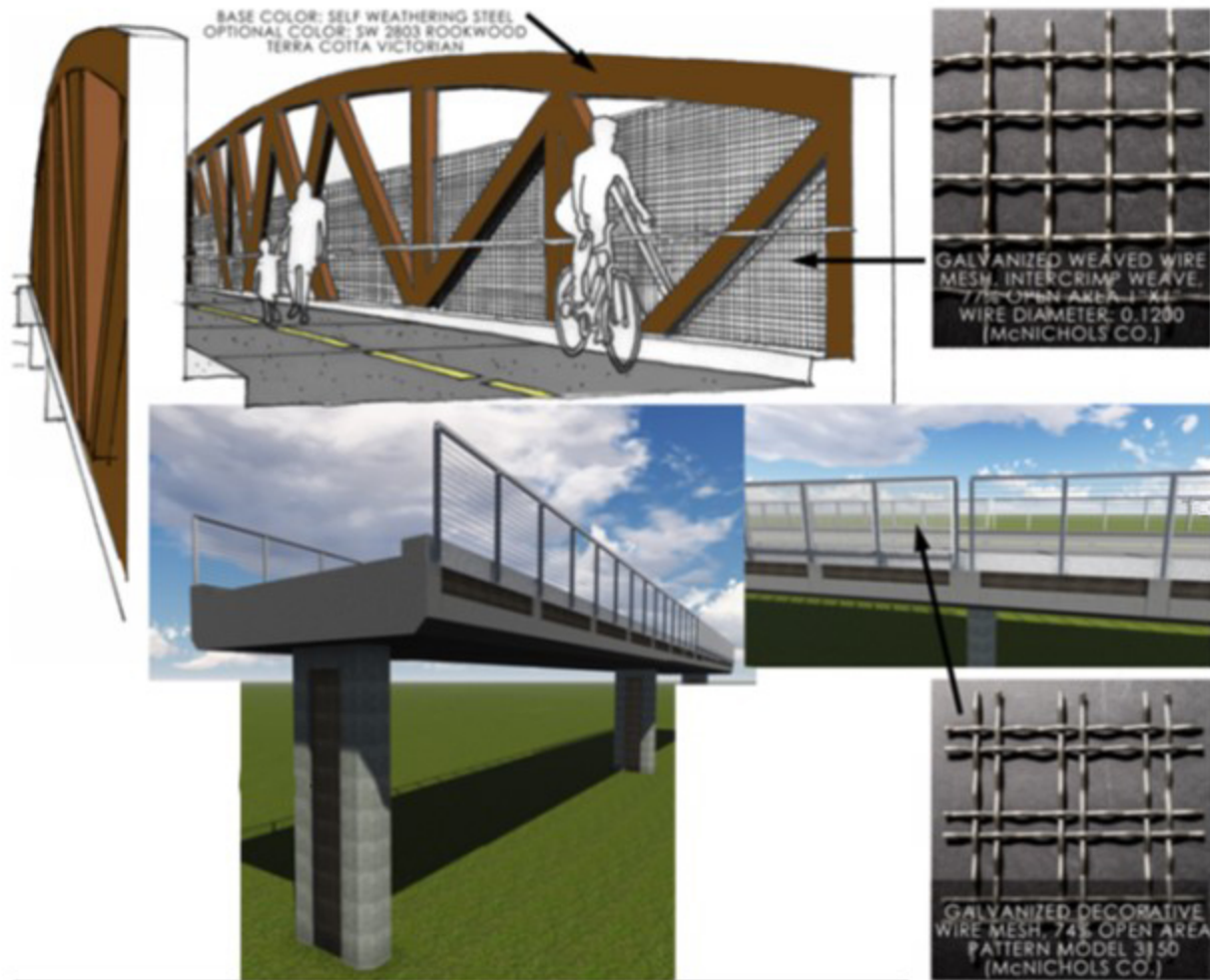
- Slower Speeds
- Traffic Calming
- Improved Safety



Baseline Railing



Railing Additive Alternates



Baseline Overlook



Landscape Areas



Platanus Acerifolia
 London Planetree

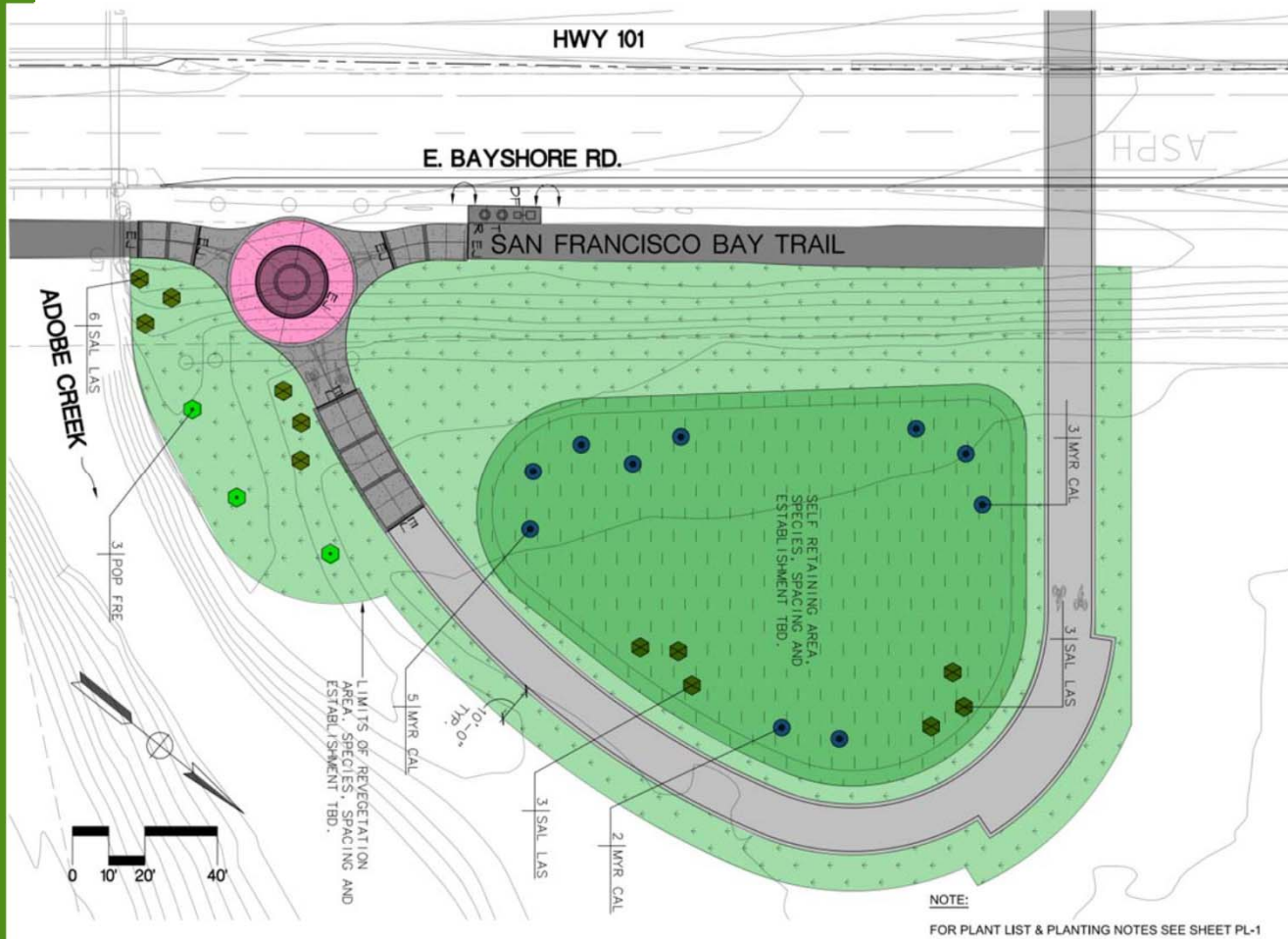


Arbutus 'Marina' -
 Marina Strawberry Tree



Myrica Californica -
 Pacific Wax Myrtle

Habitat Restoration (Baylands)



Myrica California - Pacific Wax Myrtle



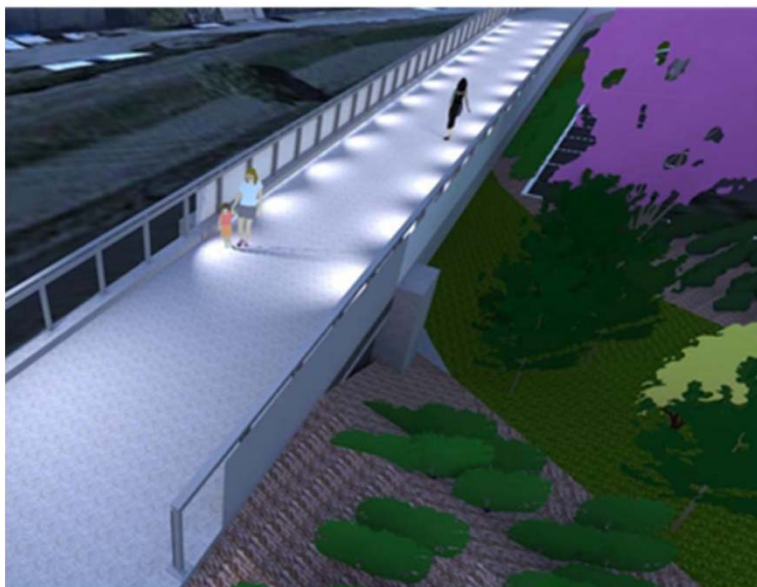
Salix Lasiolepis - Arroyo Willow



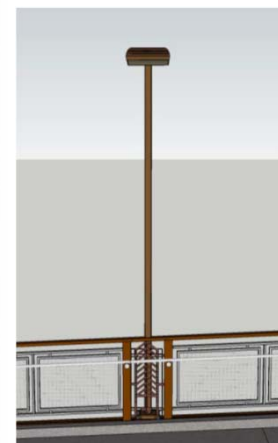
Populus Fremontii
Fremont's Cottonwood

Path Lighting

Railing Integrated LED lights at principal spans and approaches



Pole mounted LED lights at portions of Western Approach and path along West Bayshore



Signage



GENERAL NOTES:
 1. GREEN BACKGROUND WITH WHITE REFLECTIVE BORDER AND TEXT.
 2. MUTED STANDARD ARROW (3" x 2-1/2")
 3. MUTED STANDARD BICYCLE LOGO (18" x 6" x 10-1/2")
 4. TRAIL DESIGN: 2" FONT, CAPS, ALL-CAPS (ONLY FIRST LETTERS OF EACH WORD)
 5. FOR DESTINATIONS, DISTANCE, AND TRAVEL TIME, SEE "DESTINATION SIGN TABLE"



TOPPING OPTIONS



"SHARED-USE PATH SLOW FOR PEDS"



MOTOR CYCLES



Mini-Stencil (white on pavement)

INFORMATIONAL EXAMPLES – TRAIL ETIQUETTE

PAVEMENT MARKINGS

Enhanced Amenities



HYDRATION STATION – Elkay EZH2O



BIKE RACK – Emerson



BIKE REPAIR STAND – Dero Fixit



TRASH RECEPTACLE with lid– Du Mor Model #148-32SH-FTO

Schedule and Next Steps

- **Phase 1: Preliminary Design**
 - 15% and 35% designs: Complete
 - IS/MND Circulation: September 1, 2017 – October 2, 2017
 - PTC hearing: September 2017
 - PRC Park Improvement Ordinance: September 2017
 - ARB hearing: October 2017
 - CEQA Council adoption: November 2017
 - Caltrans NEPA and 65% design: Winter 2017
- **Phase 2: Final Design**
 - Right of Way, 100% design and Bid Documents: Fall 2018
- **Phase 3: Construction**
 - Construction: early 2019 to Spring 2020

QUESTIONS