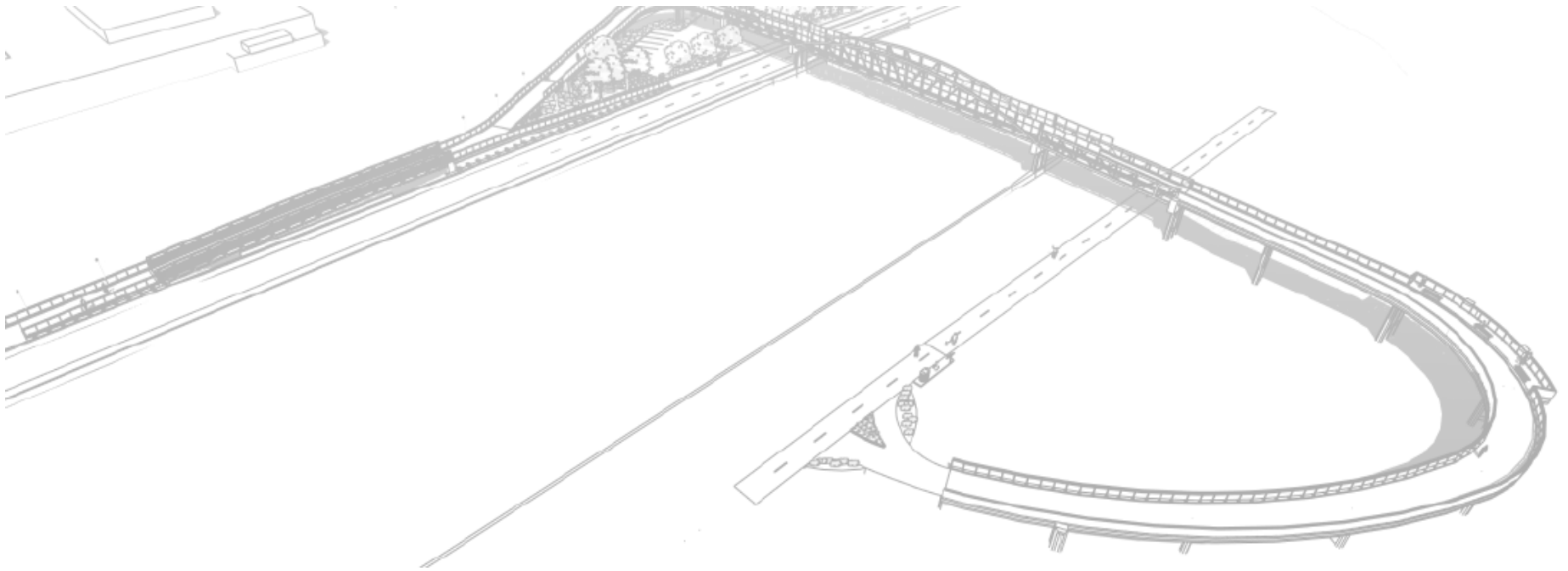


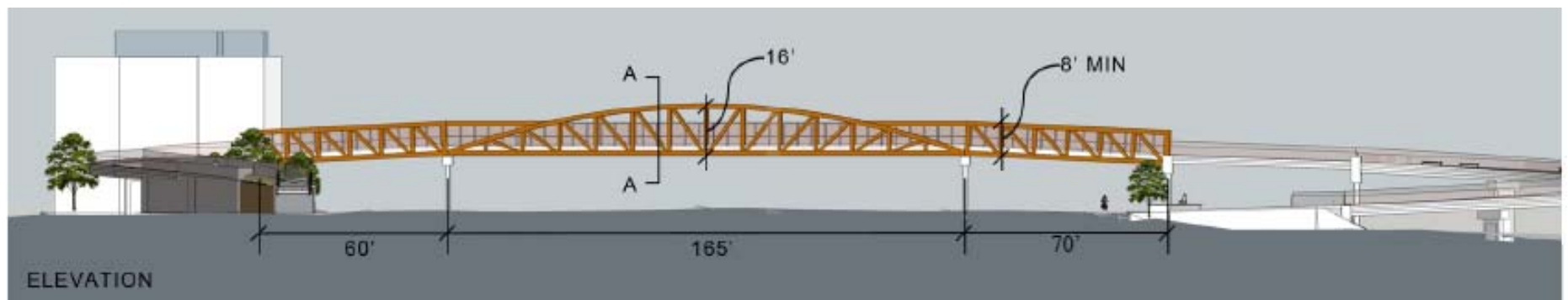
Highway 101 Bicycle/Pedestrian Overpass and Adobe Reach Trail

May 31, 2017



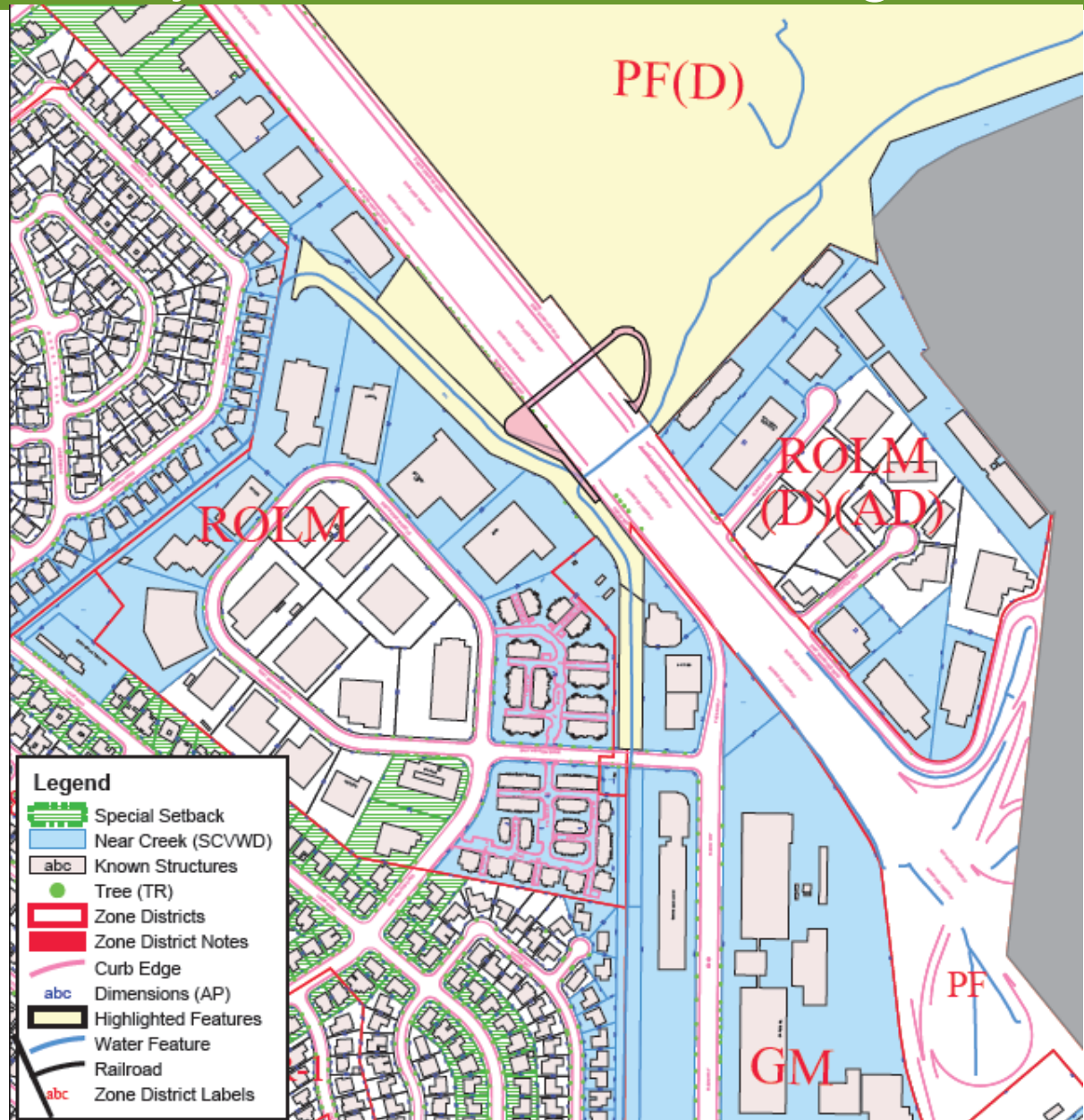
Project Overview: Location and Purpose

- Crosses Highway 101 between the East Oregon Expressway and San Antonio Road overcrossings
- Provides a year-round bicycle/pedestrian connection between commercial/residential uses west of Highway 101 and the walking/biking trails in the Baylands east of Highway 101
- Completes the Adobe Creek Reach Trail



Project Overview: Project Parcels With Zoning

- The project crosses four separate parcels within four distinct zoning districts
- The project site is zoned PF; PF(D); ROLM; and GM



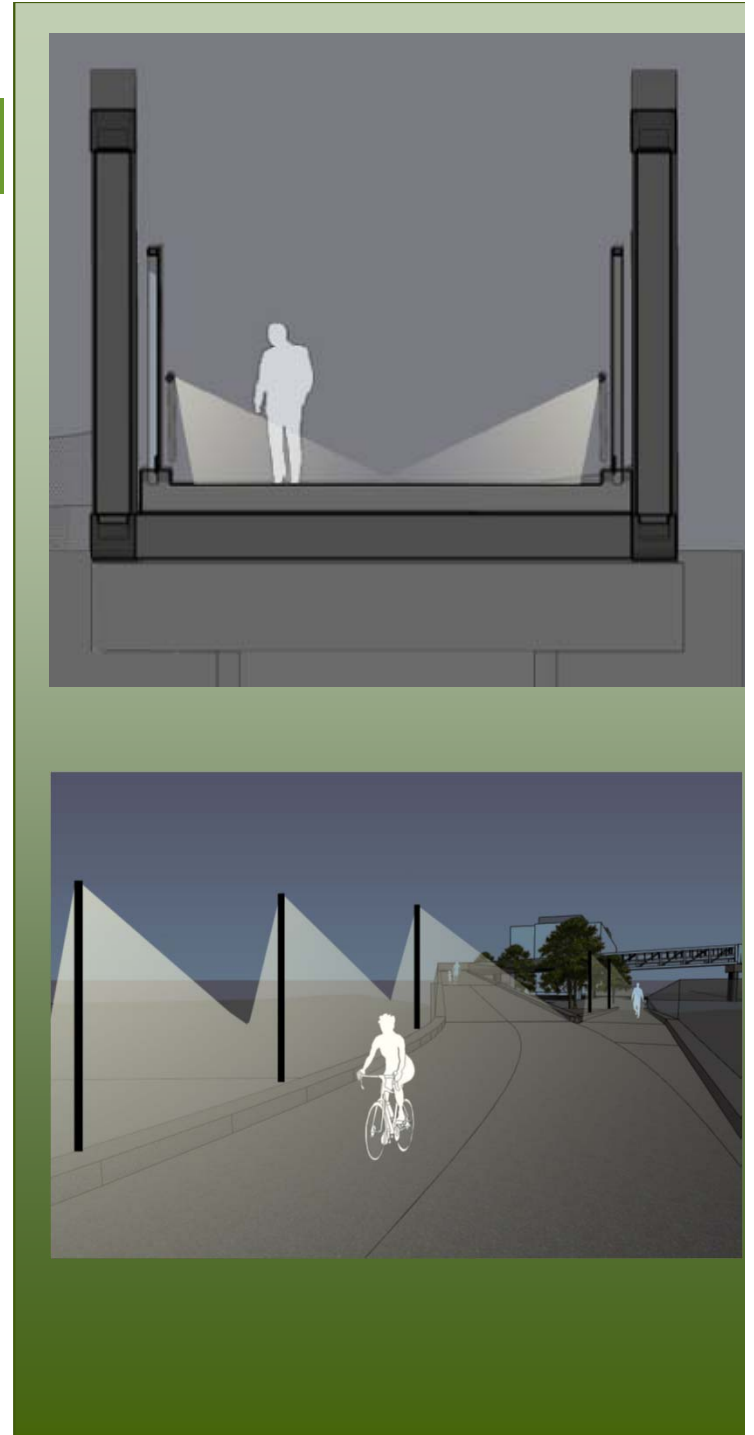
Process

- Through previous meetings/hearings Council has selected the alignment of the bridge, the type of structure, and budget
- The City's Public Works Engineering Division will refine the project based on ARB, PTC, and public input and formally apply for Site and Design review following this preliminary study session.



Requested Input from PTC

- Trail head refinements (at East Meadow Drive, East Bayshore Road, and West Bayshore Road)
- Addition/design of the overlook
- Landscaping
- Lighting
- Railing and fencing design
- type of signage (way finding/directional)
- Location of amenities (benches, drinking fountains, bike racks, trash receptacles)



Questions?



Highway 101

Multi-Use Overcrossing

City of Palo Alto

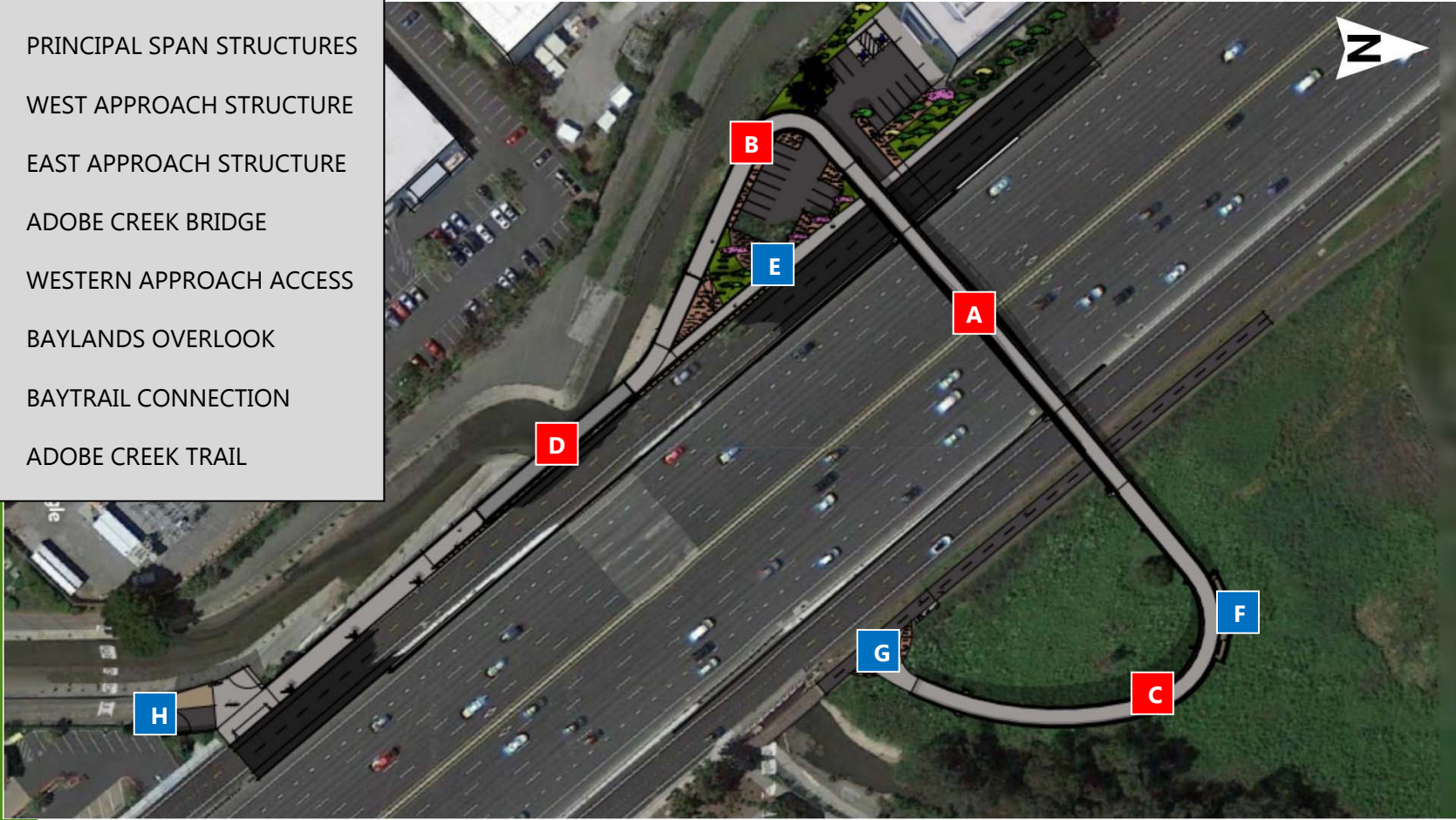
Planning and Transportation

Commission

May 31, 2017

Major Project Elements

- A** PRINCIPAL SPAN STRUCTURES
- B** WEST APPROACH STRUCTURE
- C** EAST APPROACH STRUCTURE
- D** ADOBE CREEK BRIDGE
- E** WESTERN APPROACH ACCESS
- F** BAYLANDS OVERLOOK
- G** BAYTRAIL CONNECTION
- H** ADOBE CREEK TRAIL



Western Approach Access



Looking South



Looking North

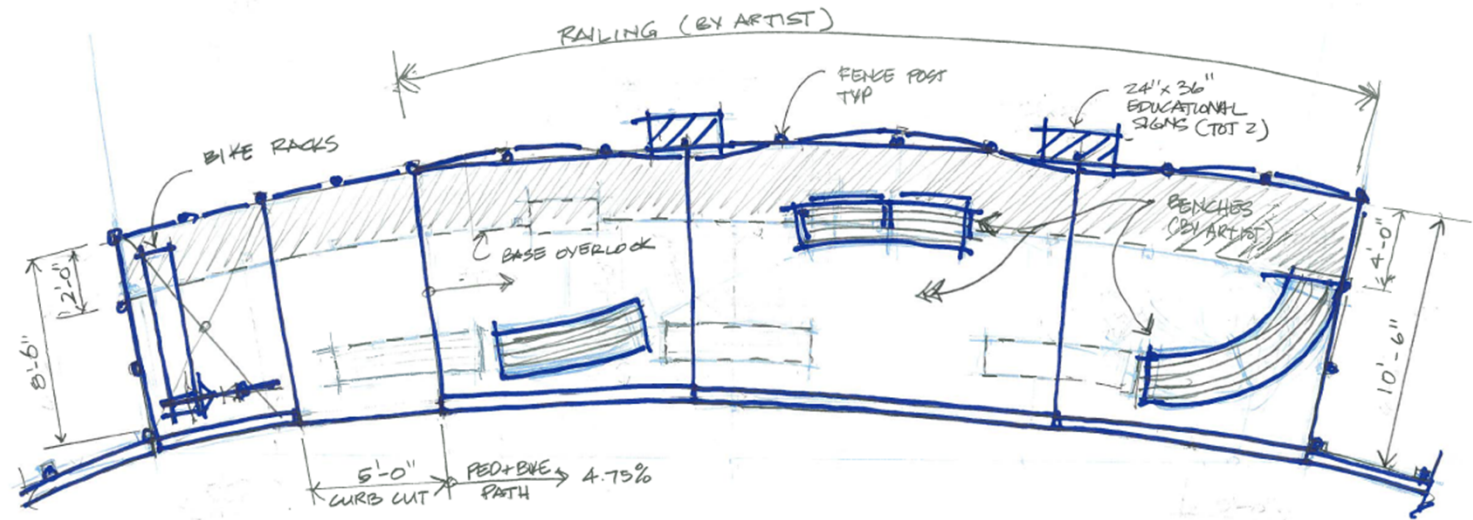
Western Access Structure



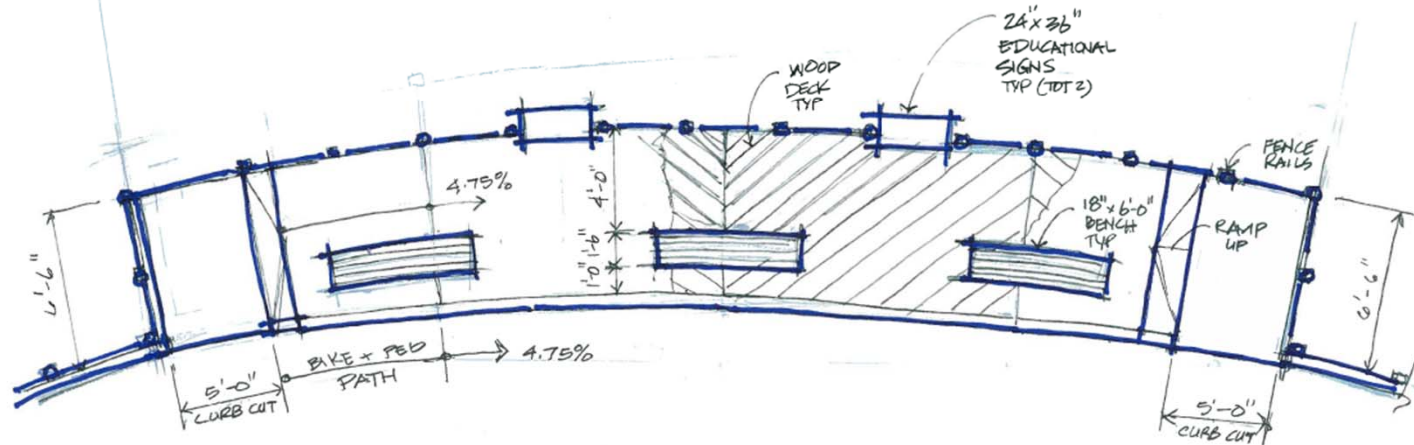
Eastern Approach Overlook



Eastern Approach Overlook



EXPANDED OVERLOOK PLAN



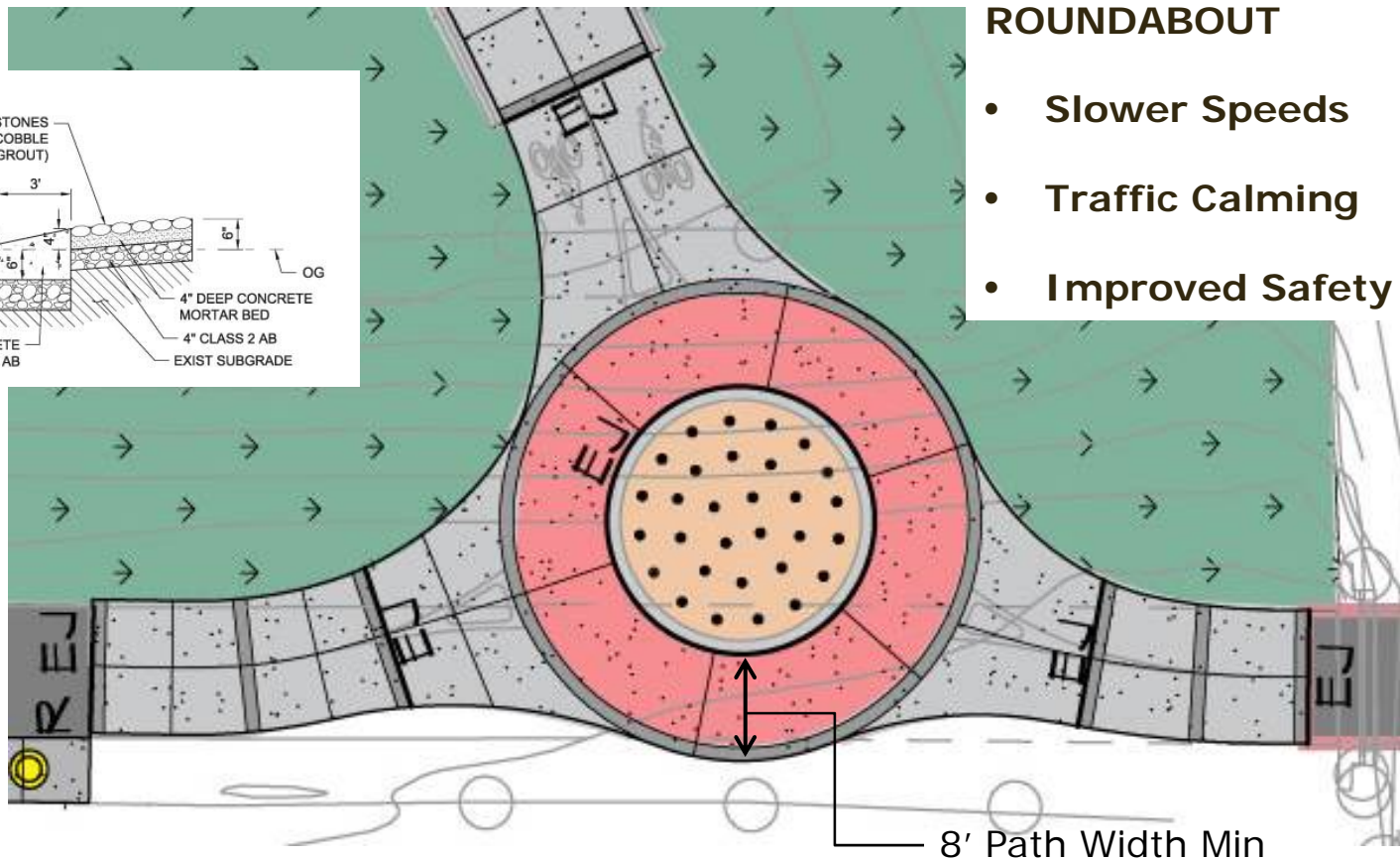
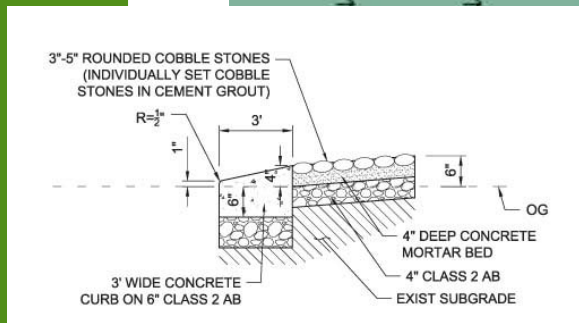
BASE OVERLOOK PLAN

Connection Points / Trailheads

CONNECTION AT BAY TRAIL/EAST BAYSHORE ROAD

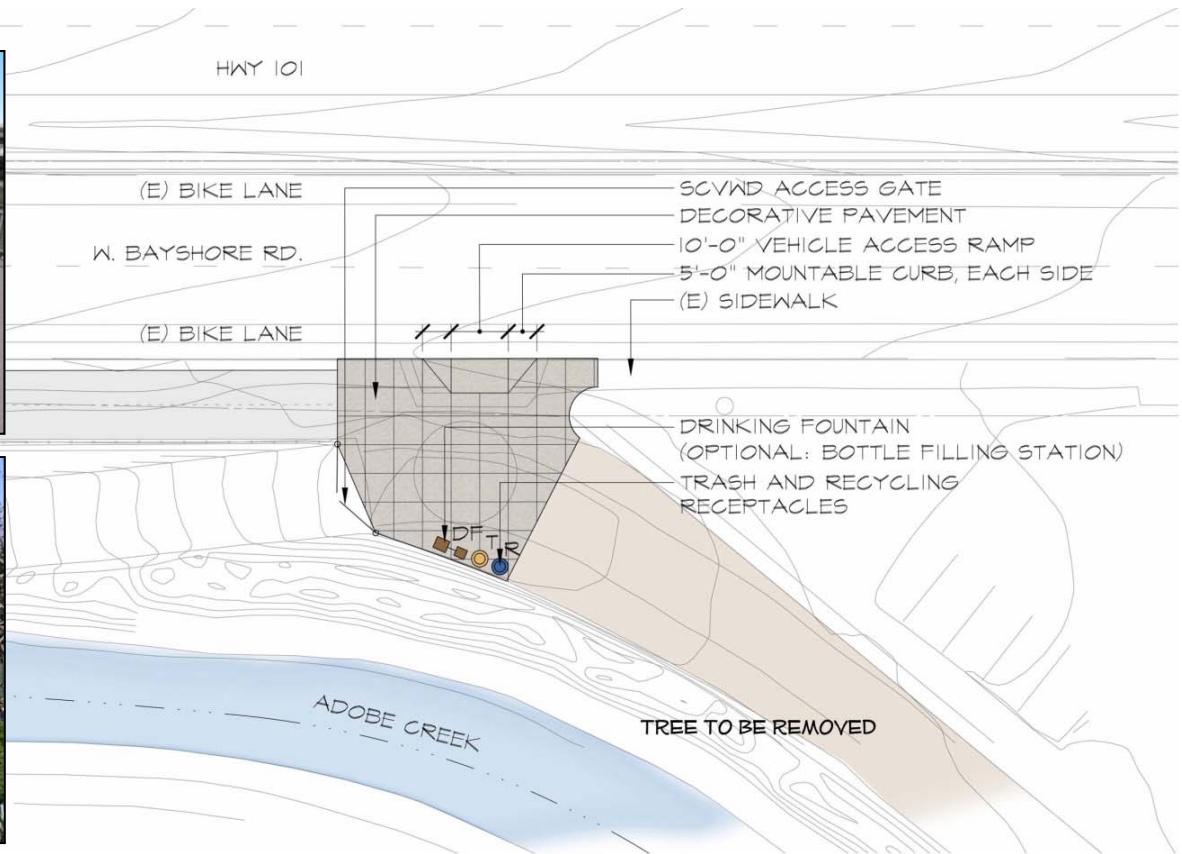
ROUNDBABOUT

- Slower Speeds
- Traffic Calming
- Improved Safety



Connection Points / Trailheads

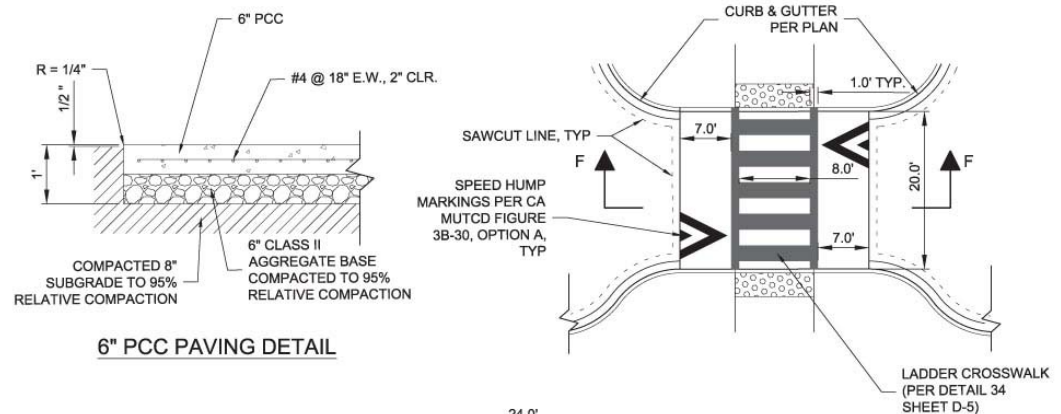
TRAILHEAD AT ADOBE CREEK REACH TRAIL – W Bayshore



W BAYSHORE TRAILHEAD PLAN

Connection Points / Trailheads

TRAILHEAD AT ADOBE CREEK REACH TRAIL – East Meadow Drive



E MEADOW DRIVE RAISED CROSS WALK



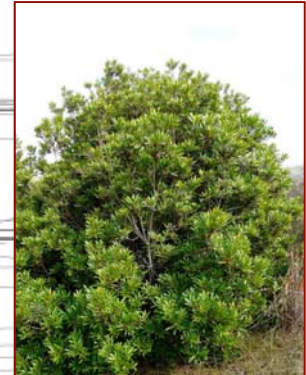
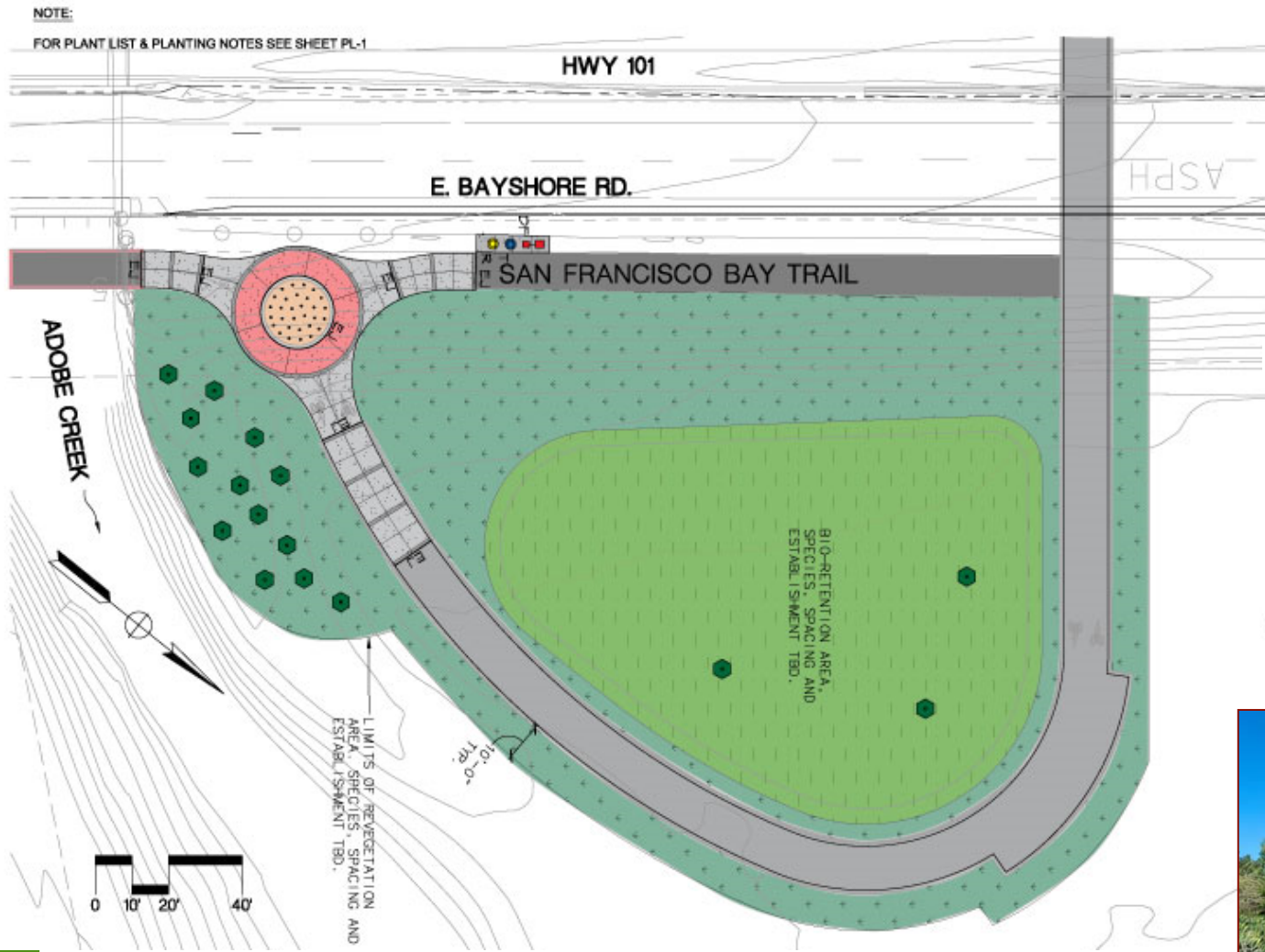
Base Architecture



Base Architecture - Context



Bio-retention/Landscape Areas



Myrica Californica - Pacific Wax Myrtle

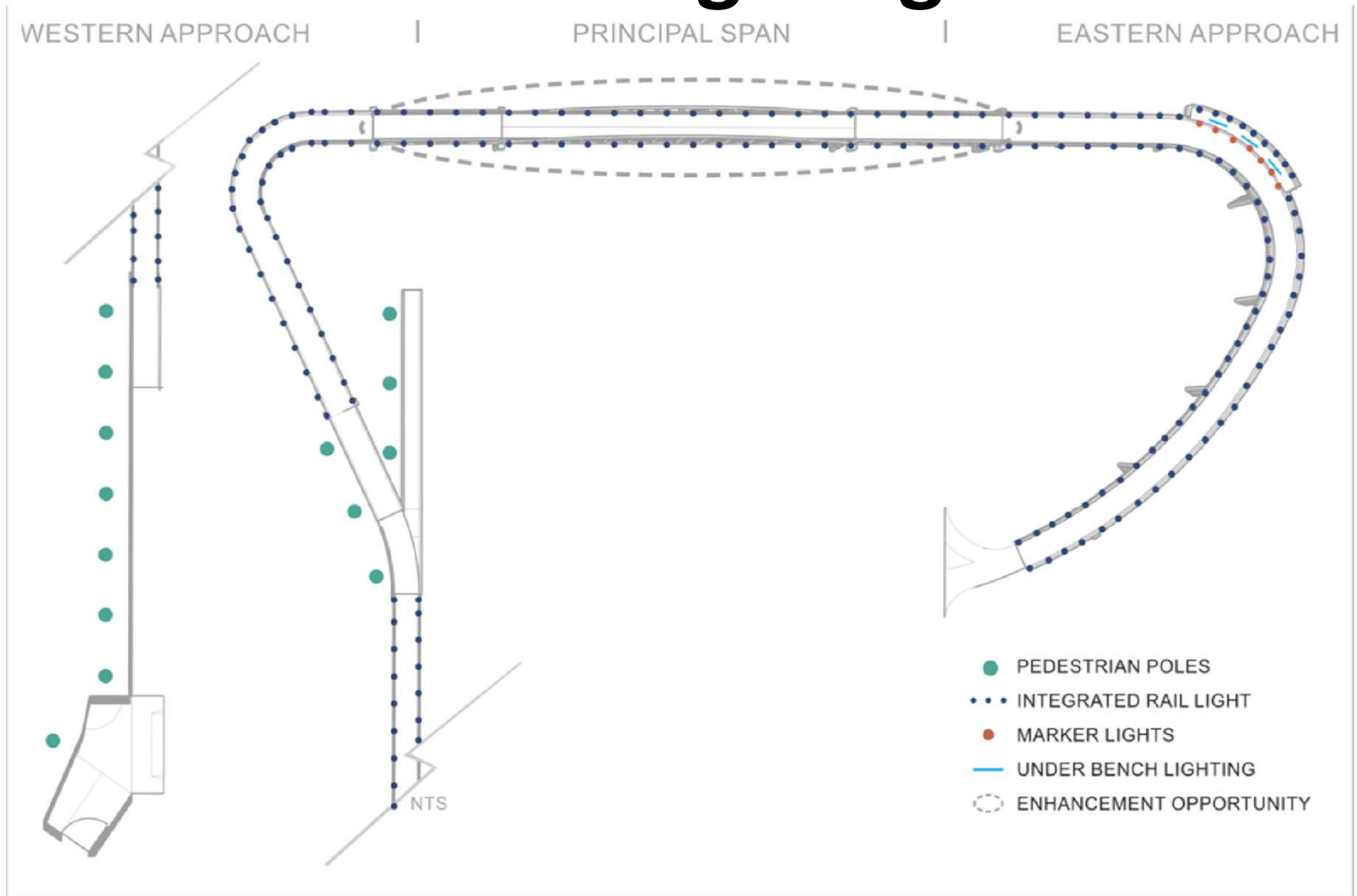


Salix Lasiolepis - Arroyo Willow



Acer Negundo Californicum - Box Elder

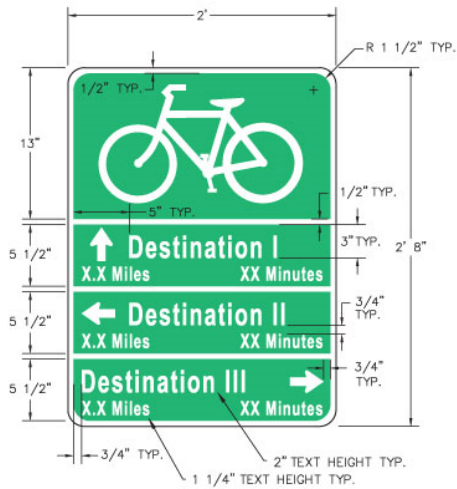
Enhanced Lighting



Path Lighting



Signage



- GENERAL NOTES:
 1. GREEN BACKGROUND WITH WHITE REFLECTIVE BORDER AND TEXT.
 2. MUTCD STANDARD ARROW (3" X 2.1")
 3. MUTCD STANDARD BICYCLE LOGO (18.42" X 10.5")
 4. FHWA SERIES C FONT, CAPITALIZE ONLY FIRST LETTER OF EACH WORD.
 5. FOR DESTINATIONS, DISTANCE AND TRAVEL TIME, SEE "DESTINATION SIGN TABLE"



DESTINATION WAYFINDING



SERVICE WAYFINDING



TOPPING/CUSTOM TRAIL OPTIONS



Information Signage/Markings



Mini-Stencil (white on pavement)



PAVEMENT MARKINGS

INFORMATIONAL EXAMPLES – TRAIL ETIQUETTE

Enhanced Amenities



HYDRATION STATION – Elkay EZH2O



BIKE RACK – Forms+Surfaces “Bike Garden”



BIKE REPAIR STAND – Dero Fixit



TRASH RECEPTACLES – Du Mor Model #148

QUESTIONS