

Ramos Park Restroom Project Update

Community Meeting

February 21, 2023

Meeting Agenda

- **Project Scope**
- **Project Update**
- **Restroom Update**
- **Project Schedule**
- **Questions and Comments**

Ramos Park



Ramos Park Project Scope

Capital Improvement Project

PG – 14000 Ramos Park Renovation Project

Renovations Include:

- **Replace Existing Playground Equipment**
- **Replace Site Amenities: Trash receptacles and drinking fountain**
- **ADA Improvements**

PG-19000 Park Restroom Installation

Total Funding: \$350,000

Install a new restroom at park location every other year

Ramos Park Project Update

Project Update

Community Meetings

Meeting #1: 1/29/20 Initial Park Renovation Meeting

Meeting #2: 8/13/20 Second Park Renovation Meeting

Meeting #3: 2/10/21 Dog Park Meeting

Project Web Page

www.cityofpaloalto.org/ramospark

www.cityofpaloalto.org/parkrestrooms

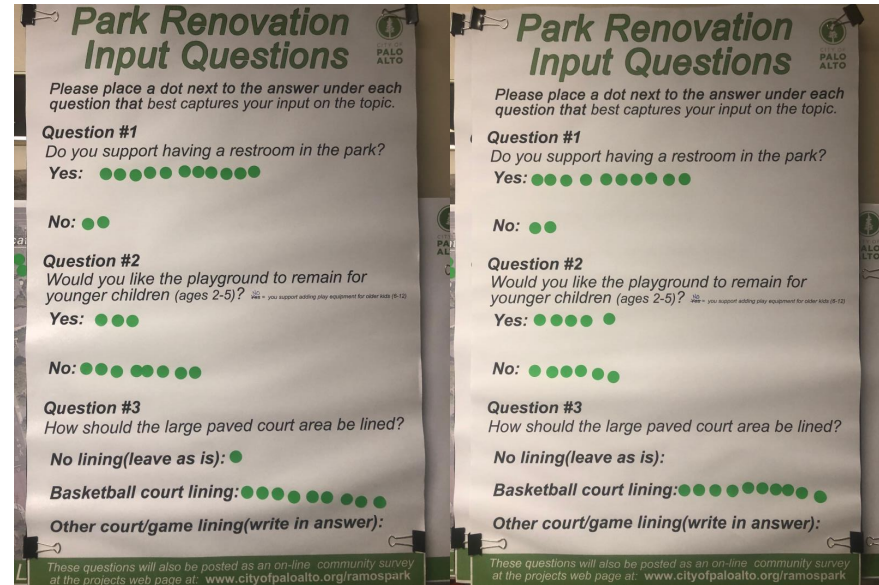
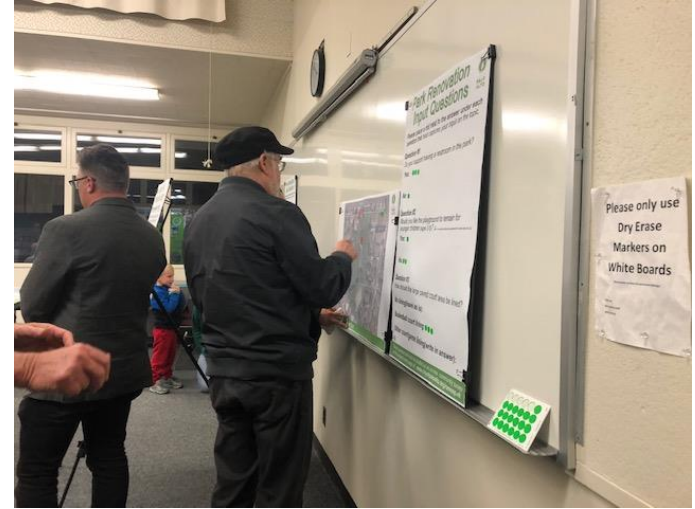
Park Renovation Portion

Anticipated Start of Construction

April 2023 - July 2023

3-5 month construction period

Community Meeting #1



On-Line Survey

Presented the same questions that were voted on at the community meeting.

As a result of the community meeting four additional questions were added to the survey.

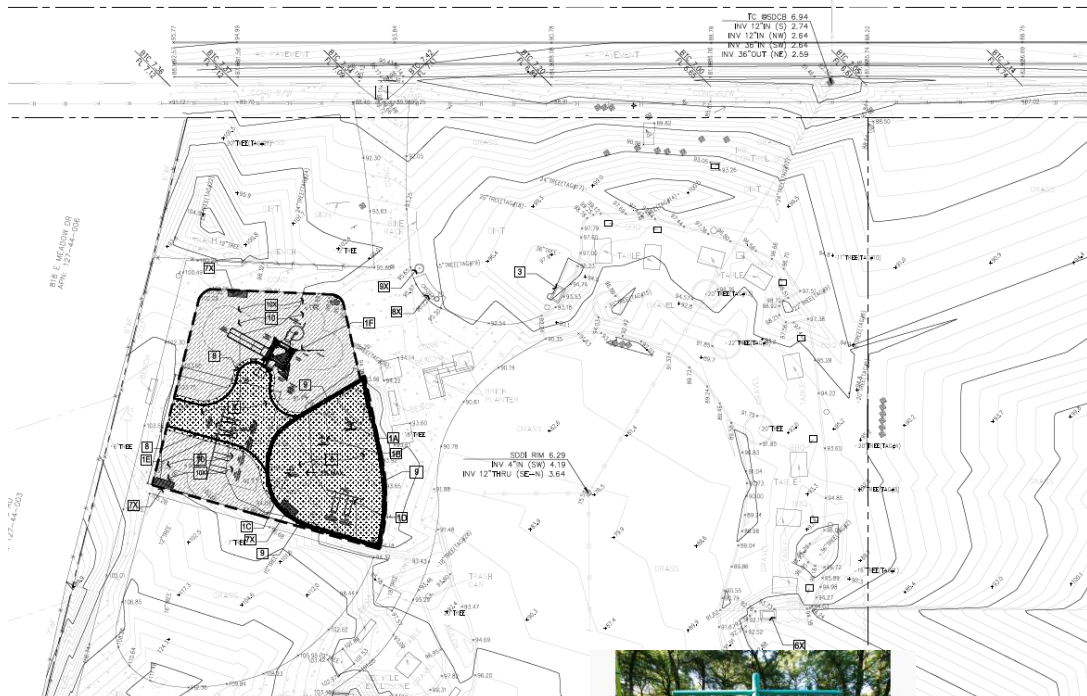
- 1. Security Lighting**
- 2. Loop Path Connection**
- 3. Native/Habitat Garden**
- 4. Dog Park**

Survey Duration: 2/3/2020 – 2/28/2020

Total Number of Participates: 167

Park Renovation Plan

EAST MEADOW DRIVE



27-13-132



PLAYGROUND EQUIPMENT/SITE FURNISHING

REFERENCE	DESCRIPTION	DETAILS
5	PLAY EQUIPMENT BY LANDSCAPE STRUCTURES CONTACT ROSS RECREATION AT 707.736.8897 FOR THE RIMMOS PLAYGROUND EQUIPMENT - OR APPROVED EQUAL. INSTALL PER MANUFACTURER DETAILS AND RECOMMENDATIONS. EQUIPMENT LIST: A. DOUBLE BOBBLE SPRING RIDER - HONEY B. GORIC SPRING RIDER - CITY TO PROVIDE C. SADDLE SPINNER - SKY POST, ACORN SADDLE D. SINGLE POST TODDLER SWING - PEBBLE POST E. 2 BAY SWING - CITY TO PROVIDE F. ALPHA TOWER - SKY PANELS, BLUE POSTS, ACORN SLIDES G. 5-12 WELCOME/SAFETY SIGN H. 2-5 WELCOME/SAFETY SIGN	
6	1 - NEW TRASH RECEPTACLES BY BEARSAVER - CE SERIES TRIPLE TRASH ENCLOSURE, ADA COMPLIANT - CE340-CH BROWN 800-851-3887 OR APPROVED EQUAL. INSTALLED (BOLTED) ON CAST-IN-PLACE CONCRETE PAD 6" THICK BY 5' LONG X 3' WIDE - LAY OUT IN FIELD NATURAL GRAY BROOM FINISH	'B' L-1.1
7	24" TALL MAX. BY 8" WIDE CAST-IN-PLACE CONCRETE CURB - TOP OF CURB SET 3.5" BELOW FINISH GRADE OF RUBBER SURFACING INSTALLED OVER TOP OF CURB AND ANGLED DOWN THE SIDES INTO THE PLAY MULCH AREA	'F' L-1.1

SURFACE LEGEND

REFERENCE	DESCRIPTION	DETAILS
8	PLAY RUBBER SURFACING TO BE 70% AZUL AND 30% CREAM BY ROBERTSON INDUSTRIES OR APPROVED EQUAL WITH 3" ATTENUATED SUB-SURFACE - FILL IN PLAY MULCH/ SAND AREA WITH 15" OF CLASS II BASE TO BRING UP TO GRADE	'A' L-1.1
9	PLAY RUBBER SURFACING TO BE 70% AZUL AND 30% CREAM BY ROBERTSON INDUSTRIES OR APPROVED EQUAL APPLY 1/2" THICK LAYER OF COLOR COAT OVER EXISTING CONCRETE CURB	'A' L-1.1
10	AREA SURFACING TO BE 24" DEPTH WOOD MULCH PLAY BARK - CONTRACTOR TO SUBMIT SAMPLE FOR APPROVAL - USE EXISTING ON BOTTOM 18" AND CAP WITH 6" NEW MULCH ON TOP	

CONSTRUCTION NOTES

1. CONTRACTOR TO REVIEW LAYOUT OF ALL NEW PARK ITEMS WITH CITY REPRESENTATIVE PRIOR TO CONSTRUCTION.
2. CONTRACTOR RESPONSIBLE TO REPAIR TURF AREAS USED FOR CONSTRUCTION ACCESS PURPOSES INCLUDING NECESSARY GRADING AND SEEDING AS ADVISED BY THE CITY.
3. PLAYGROUND SURFACING TO MEET ADA ACCESSIBLE STANDARDS WITH A MAX. CROSS SLOPE OF NO GREATER THAN 2%.

BID ALTERNATE CONSTRUCTION LEGEND

REFERENCE	DESCRIPTION	DETAILS
6X	4 - LOCATIONS (TWO NOT SHOWN ON PLAN) - REMOVE EXISTING TRASH AND WOOD FAME AND REPLACE NEW SINGLE TRASH RECEPTACLES BY BEARSAVER - CE SERIES TRIPLE TRASH ENCLOSURE, ADA COMPLIANT - CE340-CH BROWN 800-851-3887 OR APPROVED EQUAL. INSTALLED (BOLTED) ON CAST-IN-PLACE CONCRETE PAD 6" THICK BY 9' LONG X 3' WIDE - LAY OUT IN FIELD NATURAL GRAY BROOM FINISH	'F' L-1.1
7X	3 - BENCHES BY DUMOR 51-600 S1 EMBEDDED WITH BLUE POSTS	'C' L-1.1
8X	NEW DRINKING FOUNTAIN AND CONCRETE BASE, REPOUR NEW 9' LONG X 3' WIDE CONCRETE PAD AND PURCHASE AND INSTALL DRINKING FOUNTAIN BY HASLEY TAYLOR ENDURA II 4430BF-1LFRBLU WITH DRY WELL BY NDS - WATER CONNECTION BY CONTRACTOR	'D' L-1.1
9X	NDS DRY WELL WITH POP UP CAP AT SURFACE	'E' L-1.1

BID ALTERNATE SURFACE LEGEND

REFERENCE	DESCRIPTION	DETAILS
10X	AREA SURFACING TO BE 60% BEIGE AND 40% CREAM BY ROBERTSON INDUSTRIES OR APPROVED EQUAL WITH 3" ATTENUATED SUB-SURFACE FILL IN PLAY MULCH/ SAND AREA WITH 15" OF CLASS II BASE TO BRING UP TO GRADE	'A' L-1.1



Ramos Park Restroom Update

Why is a Restroom Needed

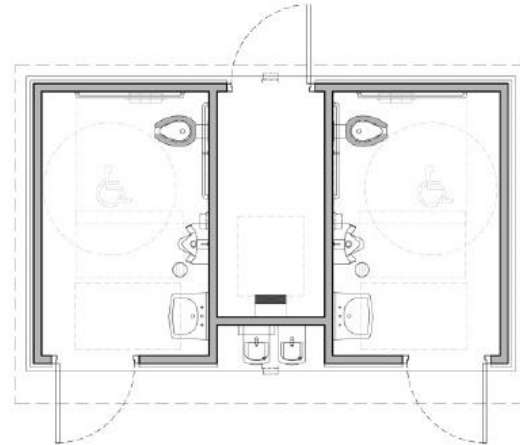
Ramos Park contains several community facilities:

- **Children's Playground**
- **Open Turf Active Play Area – Soccer Field**
- **Open Turf Passive Area - East Side & at Picnic Area**
- **Group Picnic Area**
- **Basketball Court**
- **Walking Paths**
- **Exercise Stations**

Proposed Restroom Layout

Restroom Features

- Two ADA stalls (unisex)
- Easily accessible service area
- Anti graffiti exterior
- Time locks nightly at 10pm
- Easily cleaned interiors
- Restroom to be clean everyday

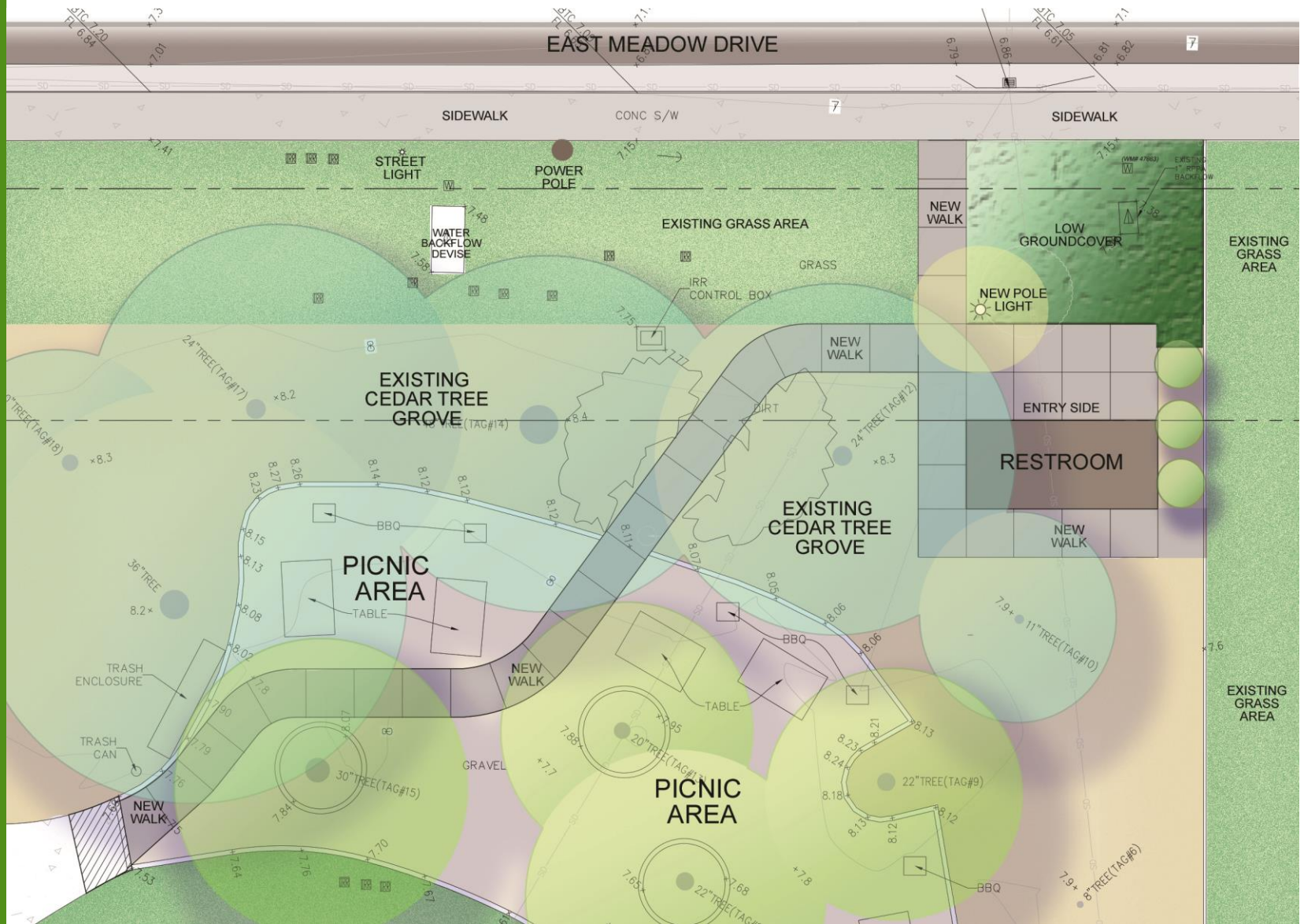


Restroom Layout



Restroom Exterior

Ramos Park Restroom Exhibit



Ramos Park Restroom Exhibit



Project Schedule

- City to Purchase Restroom April 2023
- Prefabricated Restroom Construction 10-12 months
- Site construction 2 months at start of 2024

Questions & Comments

Project Status

www.cityofpaloalto.org/ramospark

www.cityofpaloalto.org/parkrestrooms

Ramos Park

Restroom Update

Extra Slides

Community Meeting #1 - Input

**Park Renovation
Input Questions**

CITY OF PALO ALTO

Please place a dot next to the answer under each question that best captures your input on the topic.

Question #1
Do you support having a restroom in the park?
Yes: ●●●●●●●●●●
No: ●●

Question #2
Would you like the playground to remain for younger children (ages 2-5)? No Yes = you support adding play equipment for older kids (6-12)
Yes: ●●●
No: ●●●●●●●●

Question #3
How should the large paved court area be lined?
No lining(leave as is): ●
Basketball court lining: ●●●●●●●●●●
Other court/game lining(write in answer):

These questions will also be posted as an on-line community survey at the projects web page at: www.cityofpaloalto.org/ramospark

**Park Renovation
Input Questions**

CITY OF PALO ALTO

Please place a dot next to the answer under each question that best captures your input on the topic.

Question #1
Do you support having a restroom in the park?
Yes: ●●●●●●●●●●
No: ●●

Question #2
Would you like the playground to remain for younger children (ages 2-5)? No Yes = you support adding play equipment for older kids (6-12)
Yes: ●●●●●●●●
No: ●●●●●●●●

Question #3
How should the large paved court area be lined?
No lining(leave as is):
Basketball court lining: ●●●●●●●●●●
Other court/game lining(write in answer):

These questions will also be posted as an on-line community survey at the projects web page at: www.cityofpaloalto.org/ramospark

Community Meeting #1 –Restroom Input



Results

Location A: 9
Location B: 8
Location C: 4

Community Meeting Input Results

Facility Selection Question

Question 1: Do you support having a restrooms in the park?

Yes: 21

No: 4

Question #2: Would you like the playground to remain for younger children (ages 2-5)?

Yes: 8

No: 14

Question #3: How should the large paved court area be lined?

No lining (leave as is): 1

Basketball court: 19

Other court/game lining: 0

On-Line Survey Results

Question #1: Do you support having a restroom in the park?

Yes: 86 votes (52%)

No: 80 votes (48%)

Question #2: The existing playground features equipment for children of younger ages (2-5) only. Would you support having a mix of playground equipment for both younger (2-5) and older children (6-12).

Maintain Playground for younger children only (2-5): 54 votes (33%)

Add a mix of playground equipment for both younger children (2-5) and older children (6-12): 111 votes (67%)

Question #3: How should the large paved court area be striped?

No stripping: 54 votes (34%)

Basketball court striping: 91 votes (57%)

Other: 13 votes (8%) – 2 vote tennis, 3 vote half court basketball court only, 2 vote pickle ball, 1 vote to redo the surface, 3 votes to leave as is, 1 vote to add signs to limit play/noise at night, 1 vote walking loop

On-Line Survey Results Cont.

Question #4: Would you support adding one security light post to the center area of the park ? (Low intensity lighting)

Yes: 140 votes (84%)

No: 26 votes (16%)

Question #5: Would you support extending the existing walkway that currently ends in the middle of the park to connect to East Meadow Drive, creating continuous paved loop walking path around the park that doesn't cut through the picnic area?

Yes: 128 votes (78%)

No: 32 votes (22%)

Question #6: Would you support the addition of a native/habitat garden in the the park?

Yes: 100votes (62%)

No: 62 votes (38%)

Question #7: Would you support a fenced in dog park area added to the park?

Yes: 100 votes (60%)

No: 67 votes (40%)