

SOURCE: ESA, 2022; HDR, 2022

Valley Water Purified Water Project

Figure 2-1
Project Location and Proposed Project Facilities



Path: Z:\Shared\Projects\2015\150270.00 - SCVWD Expedited Recycled-Purified Water\05 Graphics-GIS-Modeling\Fig 2-7_Connection Pipeline to RWQCP.mxd, W:\McCullough 5/24/2022



SOURCE: ESA, 2022; HDR, 2022

Valley Water Purified Water Project

Figure 2-7
Connection Pipelines between the Palo Alto Advanced Water Purification Facility and the Palo Alto Regional Water Quality Control Plant





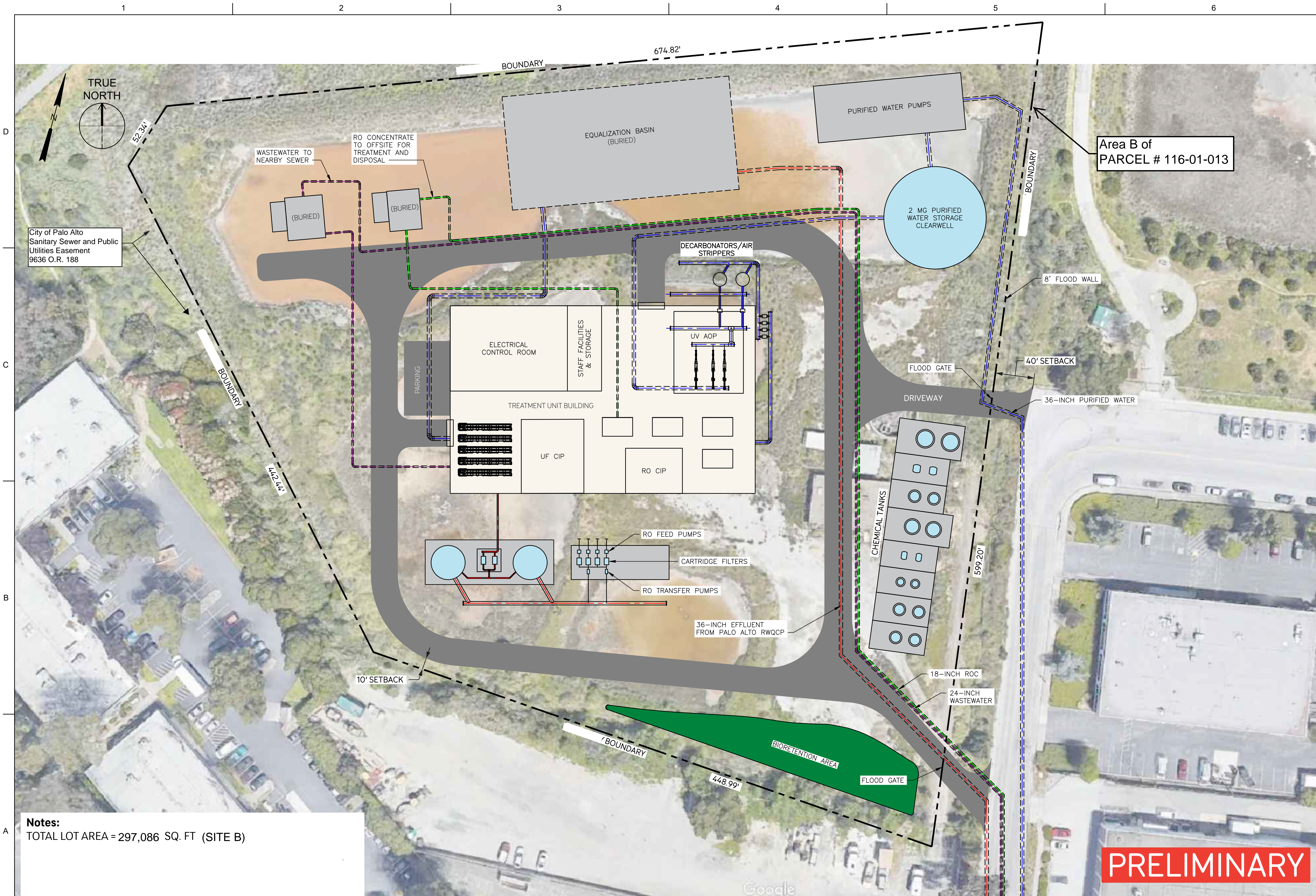
SFO/15xxxx/D/150270.00 - SCWWD Expedited Recycled-Purified Water/05 Graphics-GIS-Modeling/Illustrator

SOURCE: ESA, 2022

Valley Water Purified Water Project

Figure 2-5b
Existing and Future Comprehensive Plan Land Use Designations





Notes:
 TOTAL LOT AREA = 297,086 SQ. FT (SITE B)

PRELIMINARY

PROPOSED SITE PLAN – 1237 SAN ANTONIO ROAD, PALO ALTO, CA 94303

PARCEL #: 116-01-013
 ZONING: PF (D)

REVISIONS		
REV	DATE	DESCRIPTION

LINE IS 2 INCHES AT FULL SIZE

DESIGNED:
 DRAWN:
 CHECKED:
 CHECKED:
 APPROVED:
 FILENAME
 BC PROJECT NUMBER
 CLIENT PROJECT NUMBER

**VALLEY WATER PURIFIED WATER PROJECT
 PALO ALTO ADVANCED WATER PURIFICATION FACILITY – SITE PLAN**

PLAN
 NTS

DRAWING NUMBER
 SHEET NUMBER OF