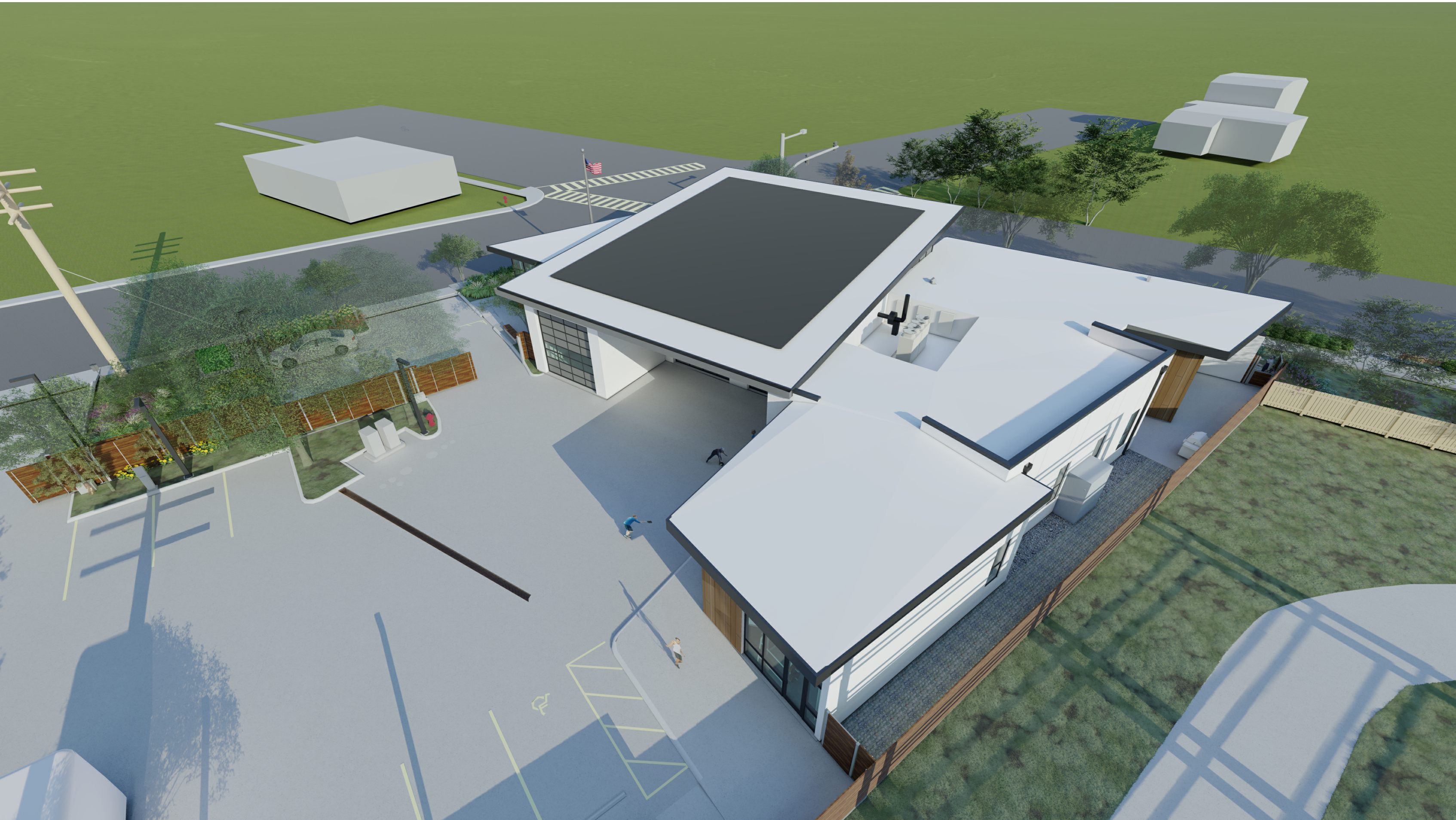




VIEW FROM PARKING TO EXERCISE AREA



PALO ALTO FIRE STATION NO.4 REPLACEMENT PROJECT

3600 MIDDLEFIELD ROAD

OWNER CITY OF PALO ALTO
250 HAMILTON AVENUE FLOOR 6
PALO ALTO, CA 94301
650.329.2397

ARCHITECT BROWN REYNOLDS WATFORD ARCHITECTS, INC.
1620 MONTGOMERY ST. SUITE 320
SAN FRANCISCO, CA 94111
415.749.2670

CIVIL ENGINEER SANDIS
636 9TH STREET
OAKLAND, CA 94607
510.590.3421

LANDSCAPE ARCHITECT HLA GROUP
301 UNIVERSITY AVE. SUITE 110
SACRAMENTO, CA 95825
916.447.7400

ARBORIST MACNAIR & ASSOCIATES
P.O. BOX 1150
GLEN ELLEN, CA, 95442
707.938.1822

INDEX OF DRAWINGS (C5_3600MID_PLAN)

- A-1A COVER SHEET
- E-1 BUILDING ELEVATIONS
- H-1A BUILDING SECTIONS
- I-1 ROOF PLAN
- TOTAL SHEETS: 4

- PLANNING APPLICATION WITH VARIANCE (C2_3600MIDD_APPLY)
- PROJECT DESCRIPTION (C3_3600MIDD_DOCS)
- ENVIRONMENTAL ASSESSMENT (C3_3600MIDD_ENVIR)
- COLOR & MATERIAL BOARD (C3_3600MIDD_MATBOARD)
- ARBORIST REPORT WITH 08/25/23 MEMORANDUM (C3_3600MIDD_ARBORIST)
- COMMUNITY OUTREACH SURVEY RESULTS (C3_3600MIDD_COMMUNITY)
- SANTA CLARA VALLEY URBAN RUNOFF POLLUTION PREVENTION PROGRAM PROVISION C.3 DATA FORM (C3_3600MIDD_SCVURPPP-C.3)
- PLANS (C4_3600MIDD_PLAN)

AD-HOC ARB REVIEW

THE FOLLOWING SHEETS ADDRESS THE COMMENTS DURING THE CONDITIONAL APPROVAL OF THE PALO ALTO FIRE STATION 4. THE FOLLOWING CHANGES WERE MADE:

1. MOVED ROOFTOP MECHANICAL TO A MECHANICAL WELL
2. CHANGED ROOF OVERHANG OF THE EXERCISE WING TO MATCH FRONT FACADE.
3. REMOVED PARAPET WALLS OVER EXERCISE WING.



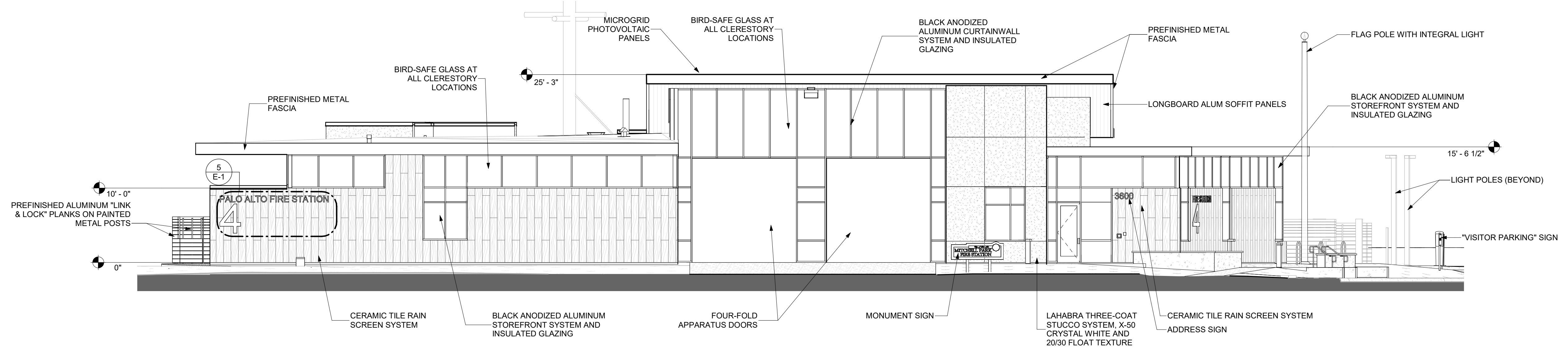
OCTOBER 4
2023



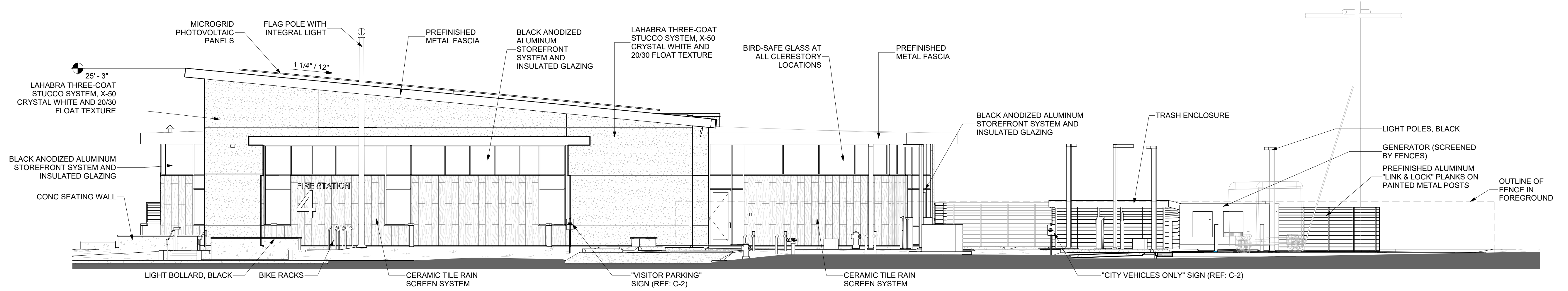


MATERIAL: ALUMINUM
FONT: ARIAL
THICKNESS: 1"
HEIGHT: 10" & 48"

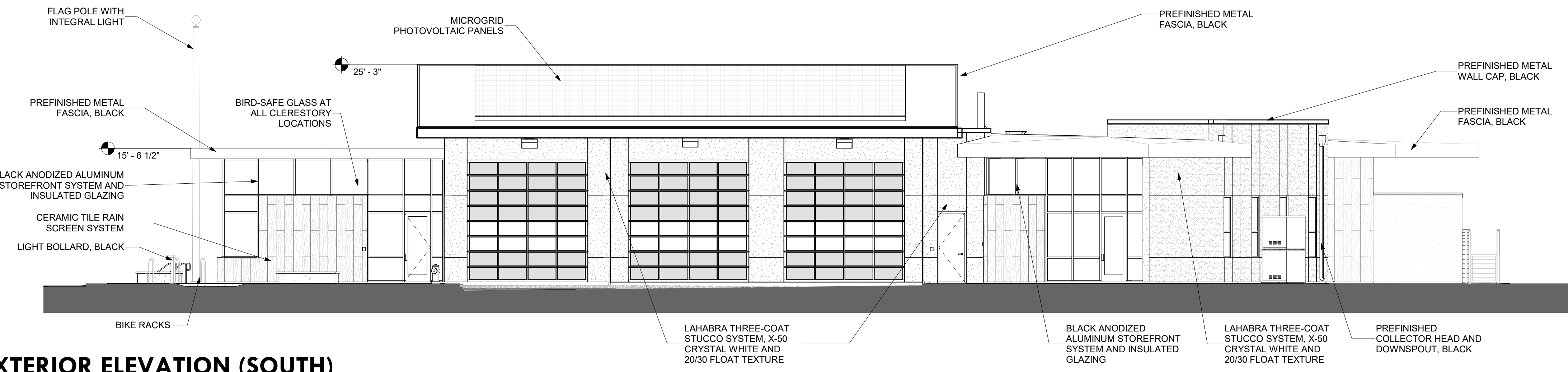
5 SIGNAGE CONCEPT
1/4" = 1'-0"



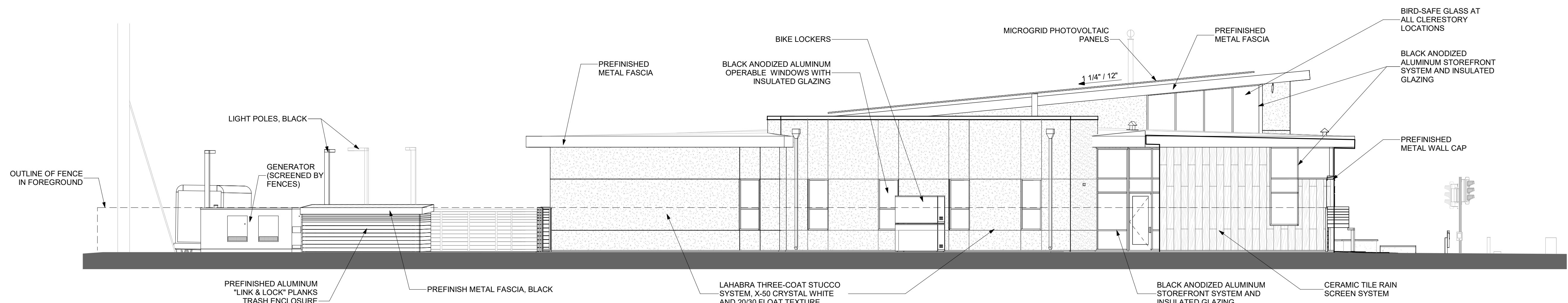
1 EXTERIOR ELEVATION (NORTH)
1/8" = 1'-0"



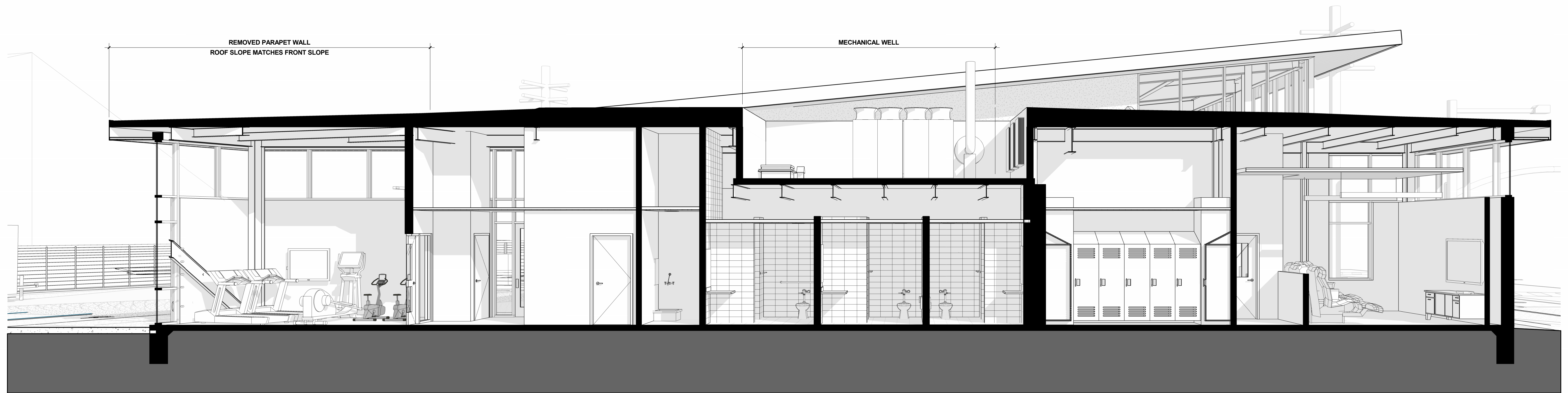
2 EXTERIOR ELEVATION (WEST)
1/8" = 1'-0"



3 EXTERIOR ELEVATION (SOUTH)
1/8" = 1'-0"



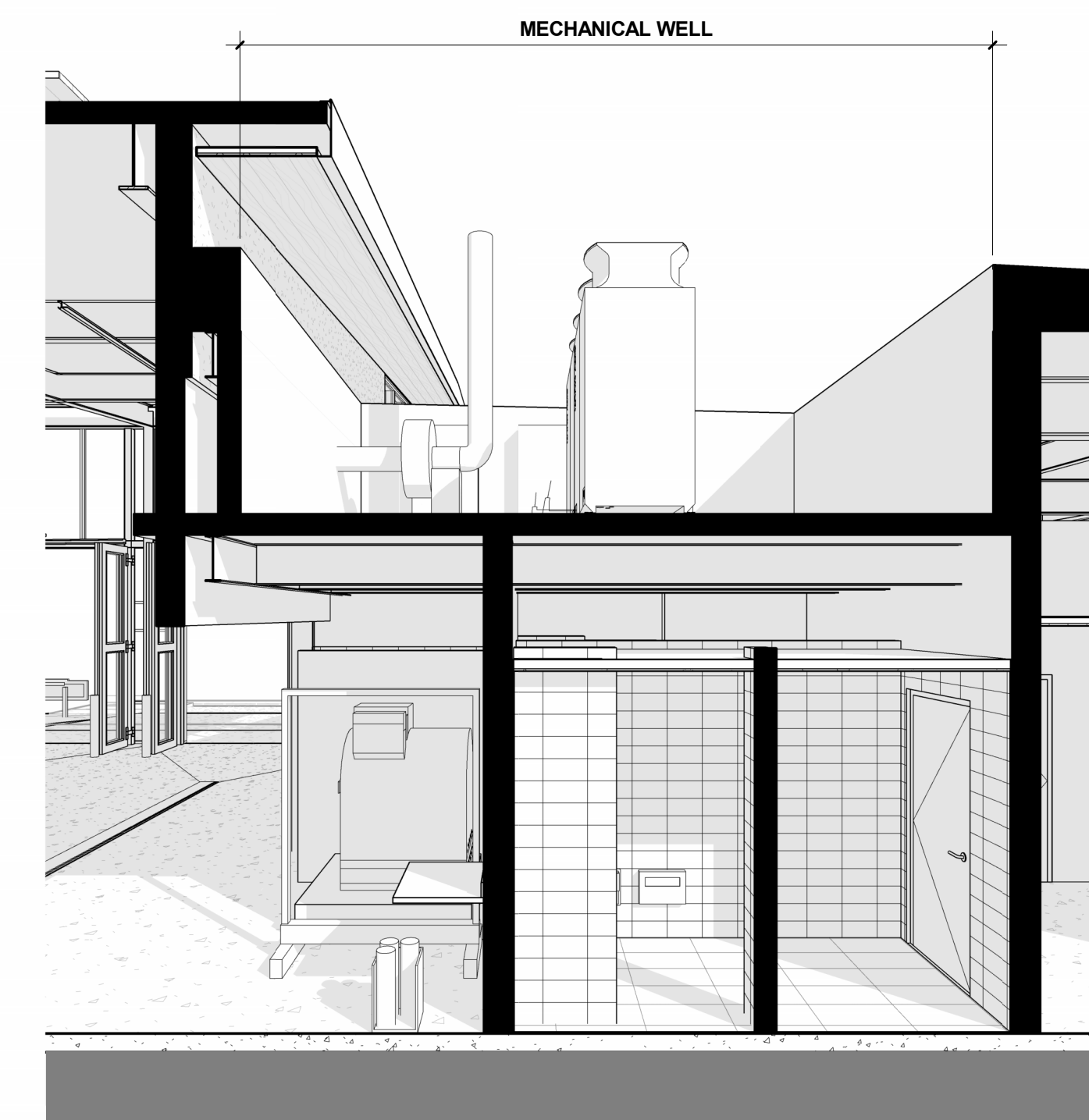
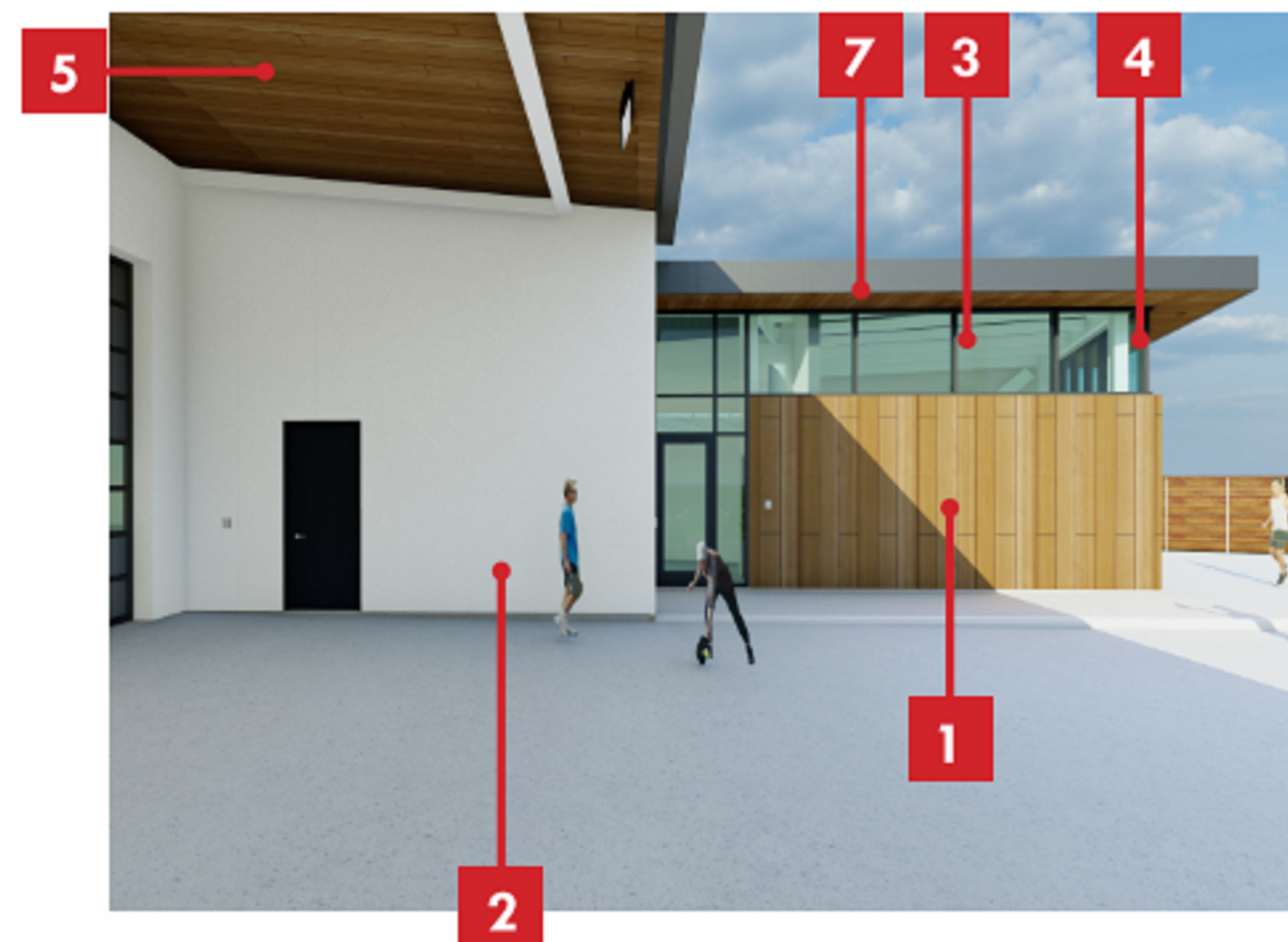
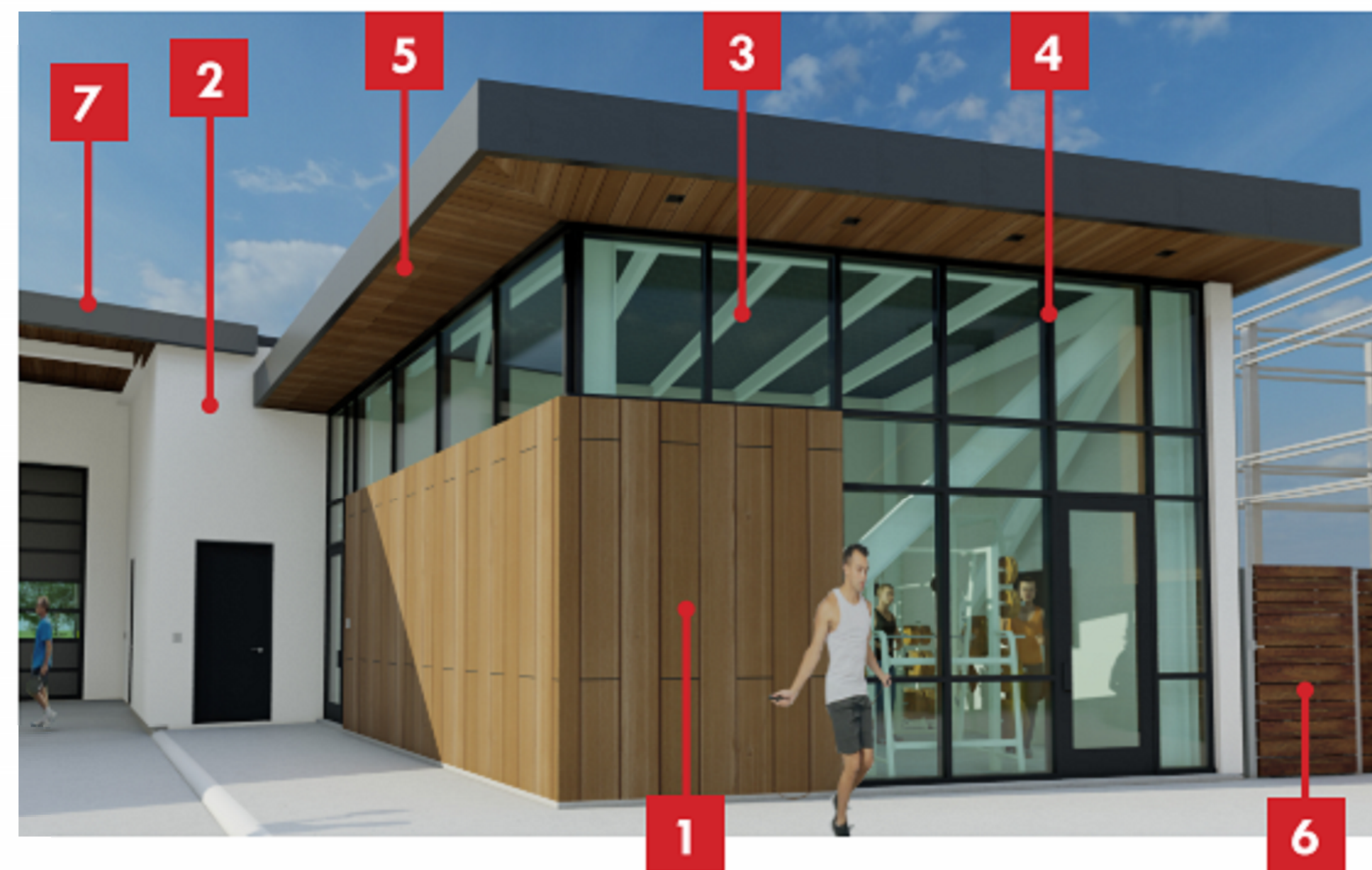
4 EXTERIOR ELEVATION (EAST)
1/8" = 1'-0"



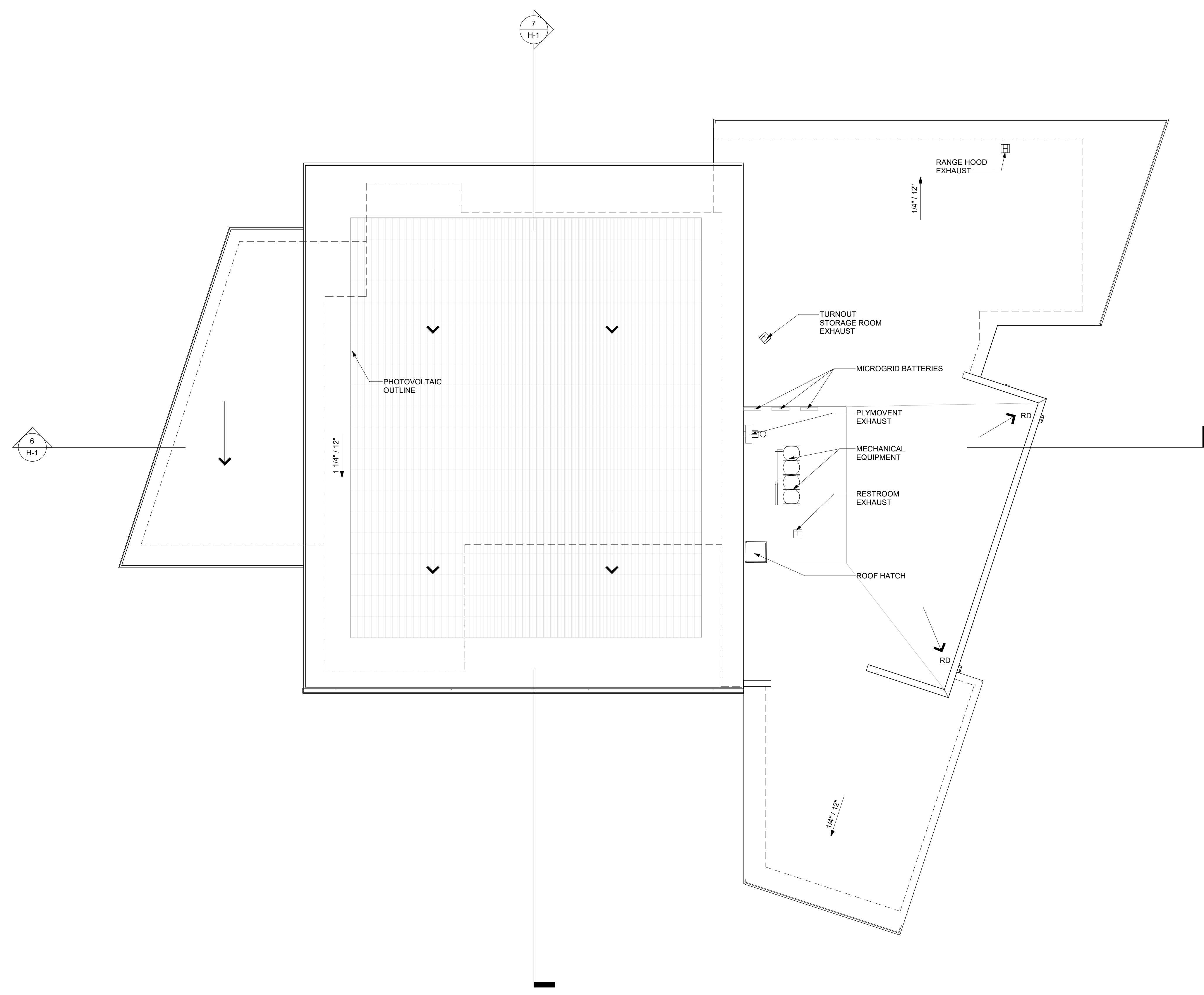
1 BUILDING SECTION MECHANICAL WELL PERSPECTIVE

A more comprehensive material board has been compiled and a digital copy has been included in this resubmittal. The exterior material board now includes:

1. **Wall Tile Rain Screen**, porcelain in color Nebraksa Noir
2. **La Habra Three-Coat Stucco System**, 20/30 Float texture in color X-50 Crystal White
3. **Bird-Safe Glass** Ceramic Fritt 3rd Pane, in color Fritted Glass
4. **Window Frames**, Anodized Aluminum Storefront System in color Black
5. **Aluminum Soffit Panels**, Powdercoated Aluminum in color Light Natural Walnut
6. **Aluminum Fencing Link & Lock System**, Powdercoated Aluminum in color Light Natural Walnut
7. **Metal Accents**, Prefinished Metal Fascia in color Black



2 MECHANICAL WELL SECTION - NORTH



1 ROOF PLAN
 1/8" = 1'-0"

