

Stormwater Management Oversight Committee Meeting

February 21, 2018



Agenda

1. FY2019 Draft Proposed Budget
2. Update on Green Stormwater Infrastructure Plan
3. Update on Current Capital Improvement Program (CIP) Project



FY2019 Draft Proposed Budget



- Timeline
- Proposals (Based budget)
- 15 year Projection (scenario)
- Fund Source and Use

Planned CIP Projects

Recurring maintenance:

- Storm Drainage System Replacement and Rehabilitation

FY 2019

- Loma Verde Ave Trunk Line Improvement (#1)

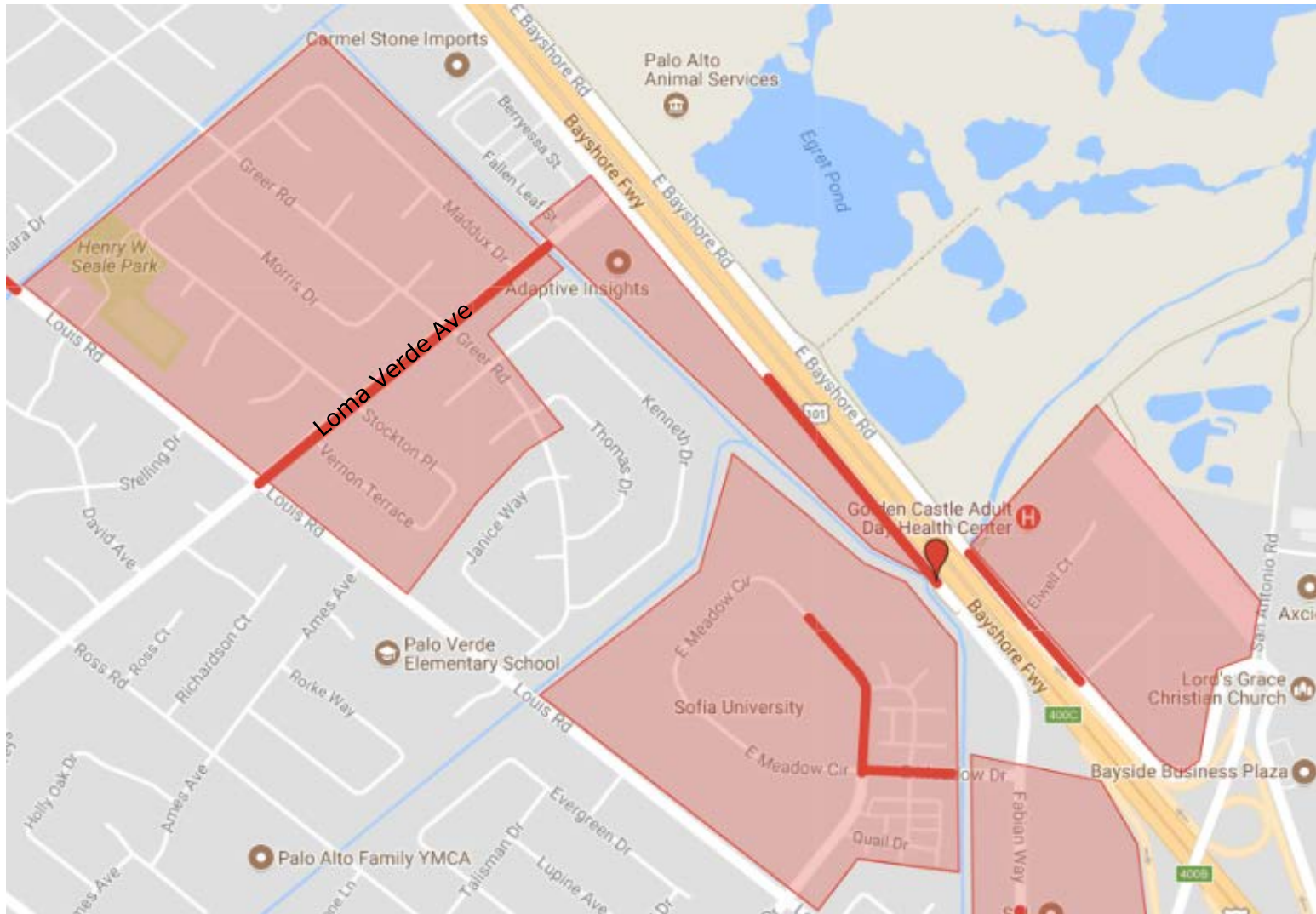
FY 2020

- Corporation Way System Upgrades and Pump Station(#2)
- West Bayshore Road Pump Station (#4)

FY 2022

- East Meadow Drive System Upgrade (#7)

Planned CIP Projects





CITY OF PALO ALTO GREEN STORMWATER INFRASTRUCTURE (GSI) PLANNING

City of Palo Alto

Consultant Team:
EOA, Inc.
Schaaf & Wheeler
Olaunu

Presentation Overview

- Project/permit background
- Progress: What we have accomplished
- Next Steps: What there is to do



GSI Permit Requirements

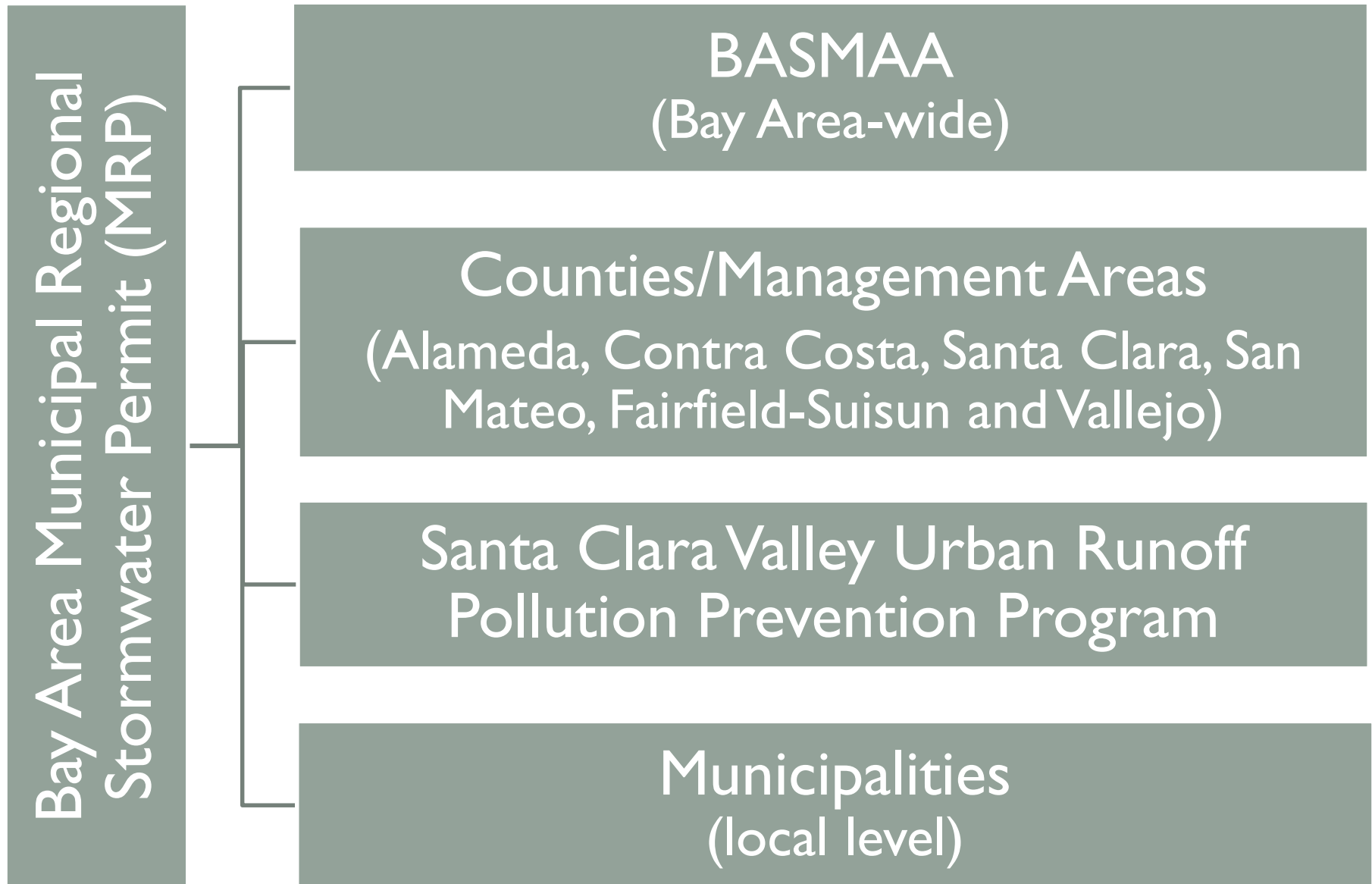
GSI Framework and Plan (2040+)

- Prioritization of potential and planned CIPs (2040)
- Tracking/mapping process
- Design guidelines, details, and specifications
- Updated planning documents
- Implementation mechanisms and funding options

“Early implementation”

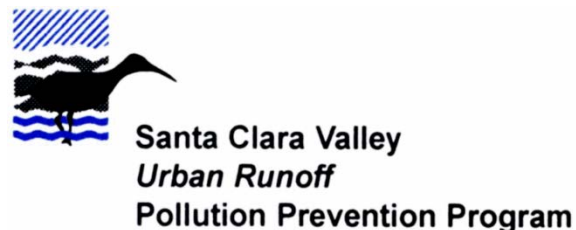
Link between GSI and pollutant controls (reasonable assurance)

MRP Implementation Coordination

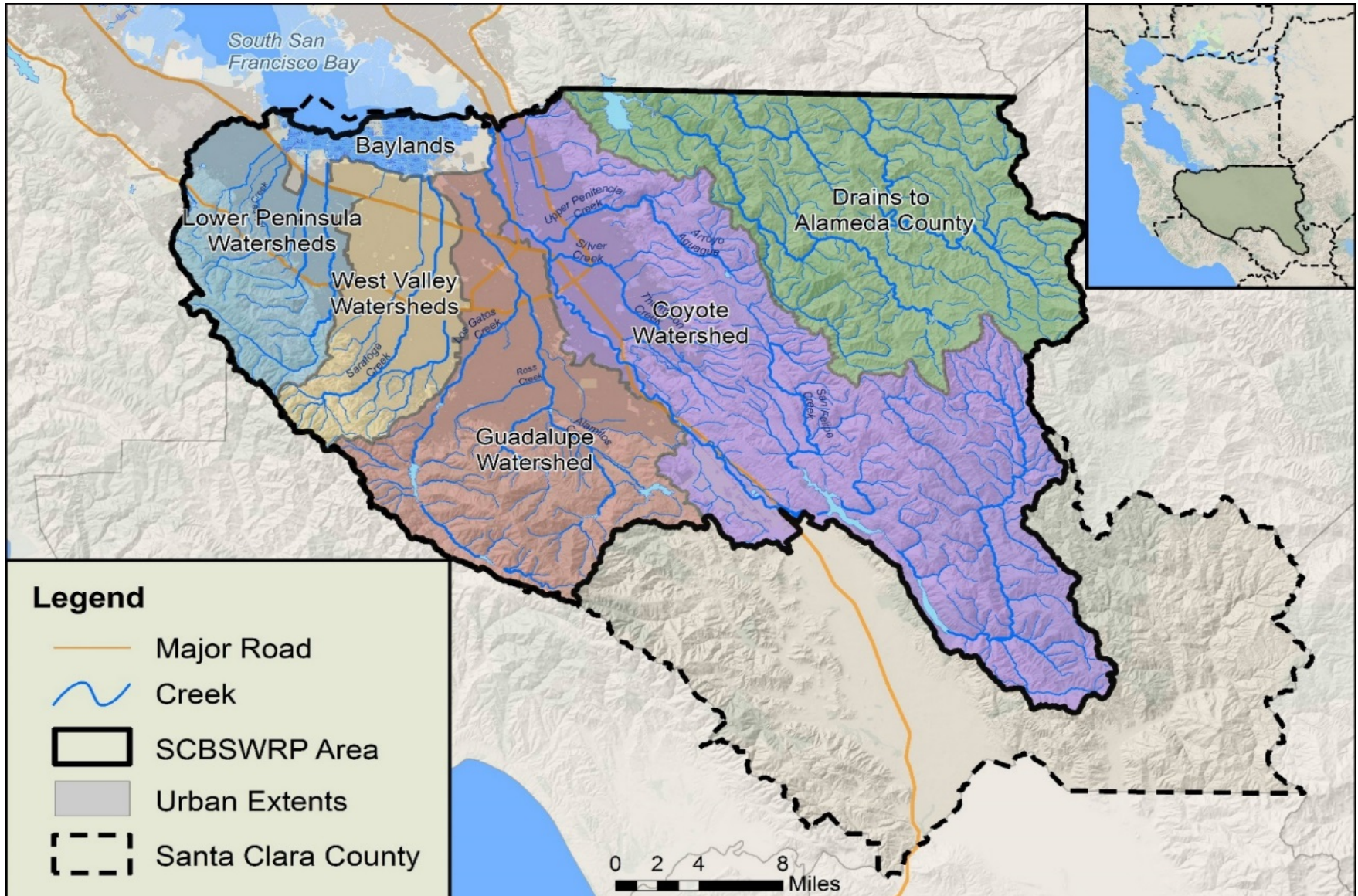


Santa Clara Basin Stormwater Resource Plan (SWRP)

- SB 985: required to receive grant funds (post- Jan. 2014)
- Prop I Stormwater Planning Grant
 - Awarded to Santa Clara Valley Water District and SCVURPPP
 - Total Project Budget: \$940,000
 - Grant amount: ~\$470,000
 - 50% match (in-kind + SCVURPPP tasks)
 - Grant period: February 2017 - December 2018



Stormwater Resource Plan Area/SCVWD “One Water” Subwatersheds



Prioritization Methodology for Potential Projects

Points assigned
per metrics

Metrics - proxies for
effectiveness &
multiple benefits

Sum of points =
rank on list

Regional

Street

Parcel



Prioritization Metrics for Regional Projects

Metric	Points					
	0	1	2	3	4	5
Parcel Land Use			Schools/Golf Courses	Public Buildings	Parking Lot	Park / Open Space
Impervious Area (%)	$X < 40$	$40 \leq X < 50$	$50 \leq X < 60$	$60 \leq X < 70$	$70 \leq X < 80$	$80 \leq X < 100$
Parcel Size (acres)	$0.25 \leq X < 0.5$	$0.5 \leq X < 1$	$1 \leq X < 2$	$2 \leq X < 3$	$3 \leq X < 4$	$4 \leq X$
Hydrologic Soil Group	C/D		B		A	
Slope (%)	$10 > X > 5$		$5 \geq X > 3$	$3 \geq X > 2$	$2 \geq X > 1$	$1 \geq X$
Proximity to Storm Drain (feet)	$X > 1,000$	$1,000 \geq X > 500$	$500 \geq X > 200$		$200 \geq X$	
Within flood-prone storm drain catchments	No					Yes
Contains PCB Interest Areas	None	Moderate				High
Within Priority Development Area	No					Yes
Co-located with another agency project	No					Yes
Augments water supply	No	Opportunity for capture and reuse	Above groundwater recharge area and not above groundwater contamination area			
Water quality source control	No	Yes				
Reestablishes natural hydrology	No	Yes				
Creates or enhances habitat	No	Yes				
Community enhancement	No	Opportunities for other enhancements	Within DAC or MTC Community of Concern			



Santa Clara Basin Storm Water Resource Plan

Info and Tools

Map themes

Map

Map Layers

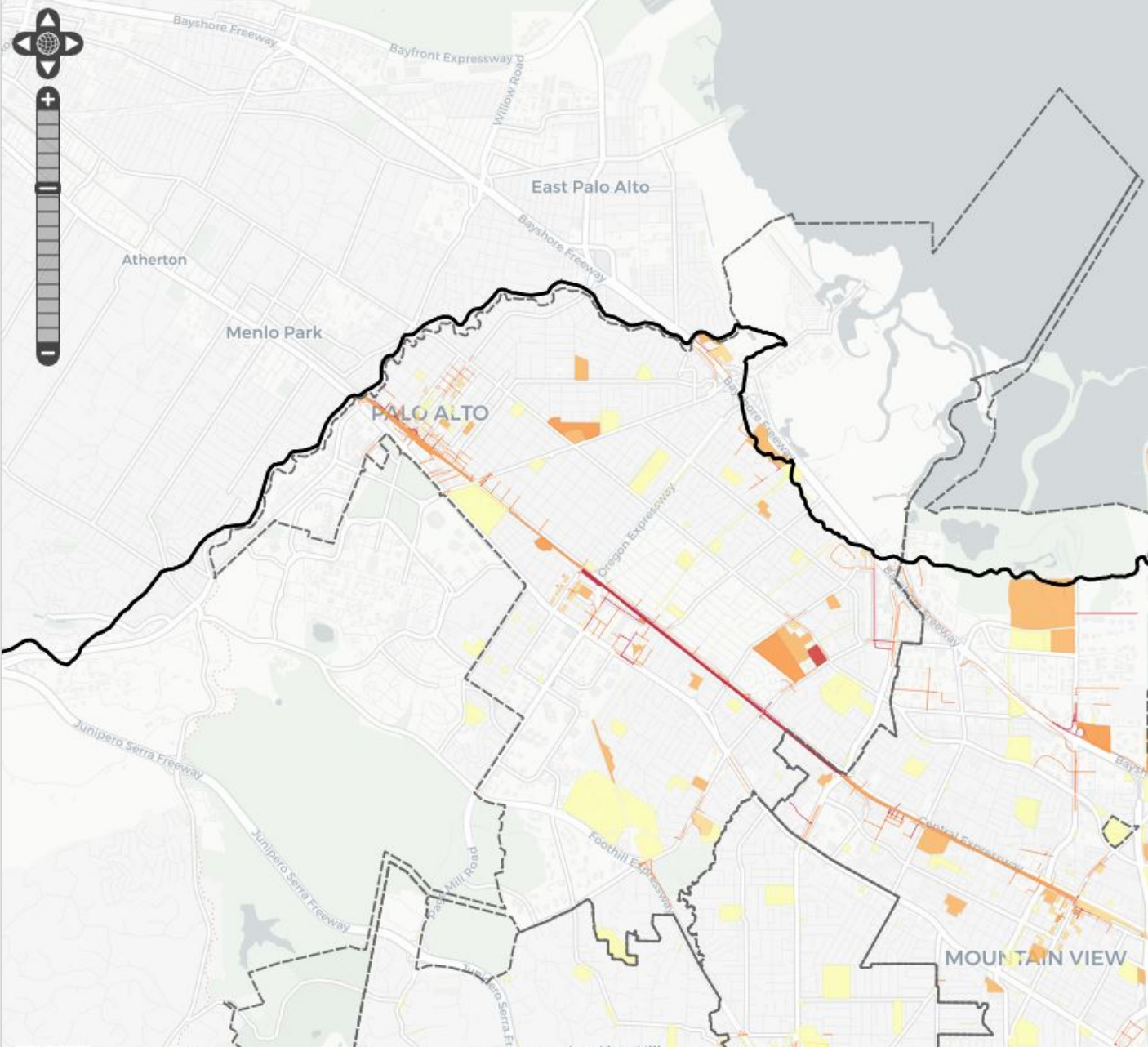
Santa Clara Basin Storm Water Res

- Creeks
- Santa Clara Basin
- City Boundaries
- Co-located Projects (general loca
- Co-located Projects (street exten
- All Regional Project Opportunitie
- All LID Opportunities
- All Green Street Opportunities
- 90th Percentile Green Street per
- Flood Prone Catchments
- Groundwater Recharge Areas

Background Layers

- Light Theme (CartoDB)
- Dark Theme (CartoDB)
- Open Street Map
- Google Satellite
- Google Map

Object identification: Active Layer



SWRP

Screen/rank potential projects



Develop prioritized list of projects



Complete draft SWRP



Prepare conceptual project designs



Complete final SWRP

GSI Plan

Identify GSI opportunities from CIP review



Incorporate SWRP list with local maps and priorities



Develop GSI Plan: planned & prioritized projects/areas



Apply for Prop I Implementation Grant?

Project list



Project list



Addtl. Projects?



Project design?



GSI Planning Process & Schedule

Task/Meeting (meeting in colored cells, categorized by group type)	Completion Date	Responsibility
GSI Workgroup Mtg. #1 (Regulatory introduction; framework development)	March 7, 2017	City staff
GSI Maintenance & Monitoring Subcommittee Mtg. #1 (introduction, maintenance coordination, resource needs)	Week of April 30, 2018	City staff/Consultant Team
GSI Framework approved by City Manager	June 30, 2017	City staff
GSI Workgroup Mtg. #2 (Plan development process)	December 14, 2017	City staff/Consultant Team ¹
GSI Workgroup Mtg. #3 (Project/area prioritization)	January 29, 2018	City staff/Consultant Team
Internal Staff Survey re: challenges/priorities (for those who do not attend meeting)	January 31, 2018	City staff
Stormwater Oversight Committee Mtg. #1 (GSI Planning process and progress)	February 21, 2018	City staff
DRAFT Maps/summaries of prioritized areas/projects	March 23, 2018	Consultant team
Stormwater Oversight Committee Mtg. #2 (Stakeholders to be invited; Topic: proposed GSI projects)	Week of April 2, 2018	City staff/Consultant Team
DRAFT Memos: Incorporation of GSI Language in City Plans and GSI Plan Funding Options	March 5, 2018	Consultant Team
FEEDBACK Memos re: Incorporation of GSI Language in City Plans and GSI Plan Funding Options Memos	March 19, 2018	City staff
FEEDBACK Maps and summary	March 26, 2018	City staff
FEEDBACK Tracking Methodology Memo	April 23, 2018	City staff
GSI Workgroup Mtg. #4 (Response to feedback on work products – funding, GSI Language in Plans, maps and tracking methodology)	Week of April 23, 2018	City staff/Consultant Team
GSI Maintenance & Monitoring Subcommittee Mtg. re: M&M Manual	Week of April 30, 2018	City staff/Consultant Team
FINAL Tracking Methodology Memo	May 4, 2018	Consultant Team

Refer to the handout

Public GSI Opportunities

- Improvements for active transportation
 - Complete Streets projects
 - Safe Routes to School
 - Bicycle route improvements
- Downtown area revitalization
- Park or athletic field improvements
- Municipal facility upgrades



Safe Routes to School Improvements – San Mateo



Hacienda Ave (Before)



Hacienda Ave (After)



Martha Gardens Green Alley, San Jose





MITCHELL PARK CENTER
CITY OF PALO ALTO
Community Center
Library
Park
Cafe
3700



Potential Challenges

- Utility Conflicts (City, PG&E, SFPUC, telecom companies)
- Resident /business concerns: loss of parking; using ROW
- Lack of Funding – 375k seed money
- Numerous City-wide needs/priorities (e.g., sidewalks/streets)
- Consistent permitting processes for public and private projects
- Long term maintenance
- Space constraints



Matadero Pump Station Project

Pump Station – November 2017



Matadero Pump Station Project

Pump Station – February 2018



Matadero Pump Station Project

Electrical Building– November 2017



Matadero Pump Station Project

Electrical Building – February 2018



Next Meeting

- Green Stormwater Infrastructure focus
- Consultants and stakeholders
- April 3rd (Tuesday) or April 4th (Wednesday)

Next Steps

Questions & Comments

