



CITY OF
**PALO
ALTO**

Public Safety Building



MONTHLY REPORT 29

August 2023

PREPARED BY NOVA PARTNERS, INC.

Project Information

City of Palo Alto
Public Safety Building

Architect
RossDrulisCusenbery

General Contractor
Swinerton Builders

Construction Manager
Nova Partners

The Public Safety Building (PSB) is a new three-story police station, fire administration, and emergency communications and operations facility. The PSB will be located on an existing City-owned parking lot at 250 Sherman Ave. The new PSB includes two full-block subterranean floors of secure police and staff parking and makes accommodation for a site utility yard, a public plaza, a 135ft communications tower and exterior site buildings.

The primary goal of this project is to create a state-of-the-art facility that brings the City's public safety departments together in a structure which meets current building codes and standards, including the Essential Services Buildings Seismic Safety Act, while serving the public's needs as a civic focal point.

The new PSB project consists of a ballistically rated exterior, coupled with technology-heavy communications systems and sufficient back-up power to allow the building to function in the event of an emergency. Other features include:

- Public plaza and main entry on Birch Street
- Multi-purpose training room and meeting space
- Secure operations yard with large public safety vehicle parking
- A water exclusionary shoring system ("cut-off wall") to minimize groundwater pumping during construction
- Connection to PV panels on California Avenue Parking Garage provides clean energy

The construction contract was awarded to Swinerton Builders and work began on March 1st 2021. Completion is anticipated for late 2023.



Activities

Work Activities August 2023:

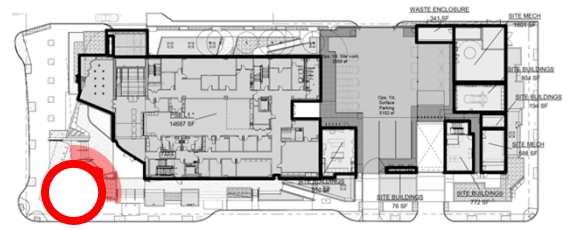
- Continued fire sprinkler and electrical installation for PV work in the garage [350 Sherman]
- Transformer delivered on 7/27/23
- Monopole Base Installation
- WGW water and fire Line
- Plaster installation at CMU wall on Jacaranda
- Site wall formwork and rebar on Jacaranda
- Silva Cell installation on Park
- Continue overhead communication installation
- Continue drywall on all levels

Upcoming Activities September 2023:

- Continue site wall formwork and rebar on Jacaranda
- Continue Silva Cell installation
- Continue overhead communication installation
- Monopole Tower Installation
- Continue Utility Yard waterproofing
- Targeting September 15 for permanent power

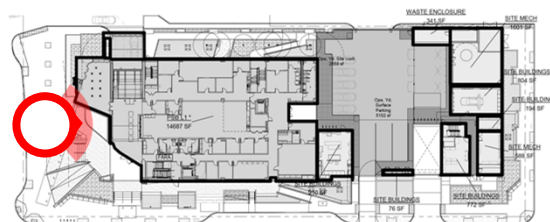
Completion is anticipated in Late 2023.

Project Photos



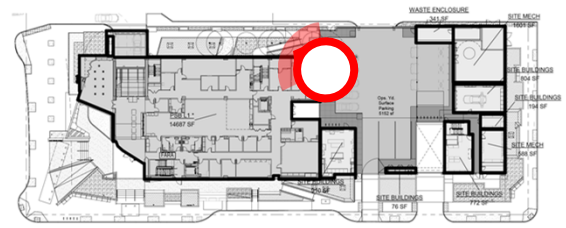
View from Sherman Ave and Birch St.

Project Photos



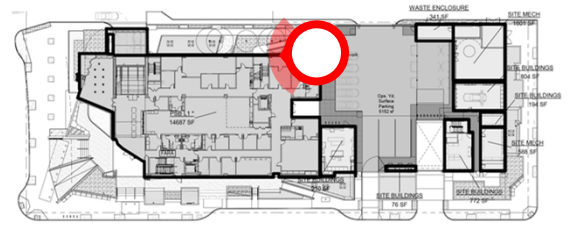
View from Birch St.

Project Photos



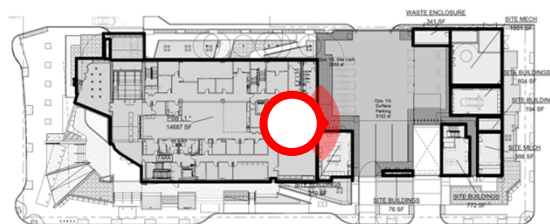
View of Jacaranda Plaster Walls.

Project Photos



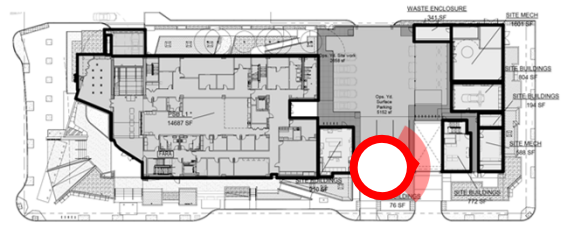
View of CMU plaster and site work on Jacaranda Rd.

Project Photos



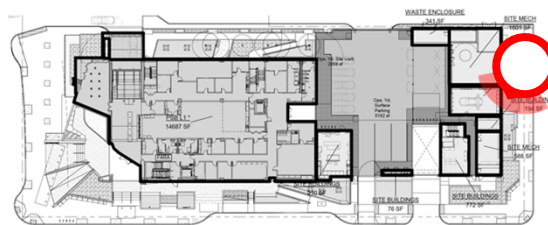
View of Utility Yard from Third Floor.

Project Photos



Waterproof flood testing.

Project Photos



Silva Cell installation on Park Ave.