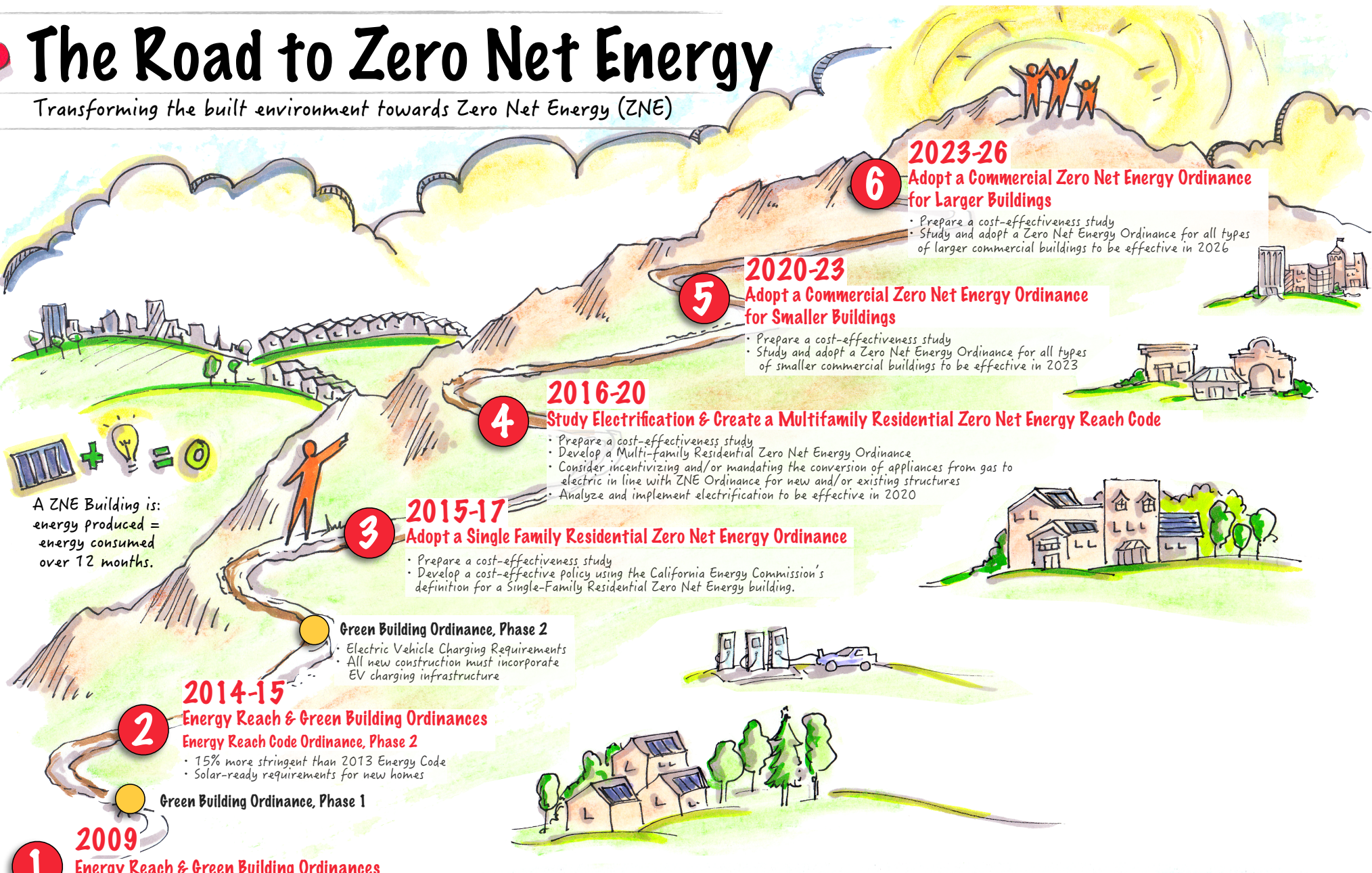


The Road to Zero Net Energy

Transforming the built environment towards Zero Net Energy (ZNE)



A ZNE Building is:
energy produced =
energy consumed
over 12 months.

1

2009

Energy Reach & Green Building Ordinances
Energy Reach Code Ordinance, Phase 1

- 15% more stringent than the 2008 Energy Code
- Energy Benchmarking & Monitoring

2

2014-15

Energy Reach & Green Building Ordinances
Energy Reach Code Ordinance, Phase 2

- 15% more stringent than 2013 Energy Code
- Solar-ready requirements for new homes

Green Building Ordinance, Phase 1

Green Building Ordinance, Phase 2

- Electric Vehicle Charging Requirements
- All new construction must incorporate EV charging infrastructure

3

2015-17

Adopt a Single Family Residential Zero Net Energy Ordinance

- Prepare a cost-effectiveness study
- Develop a cost-effective policy using the California Energy Commission's definition for a Single-Family Residential Zero Net Energy building.

4

2016-20

Study Electrification & Create a Multifamily Residential Zero Net Energy Reach Code

- Prepare a cost-effectiveness study
- Develop a Multi-family Residential Zero Net Energy Ordinance
- Consider incentivizing and/or mandating the conversion of appliances from gas to electric in line with ZNE Ordinance for new and/or existing structures
- Analyze and implement electrification to be effective in 2020

5

2020-23

Adopt a Commercial Zero Net Energy Ordinance for Smaller Buildings

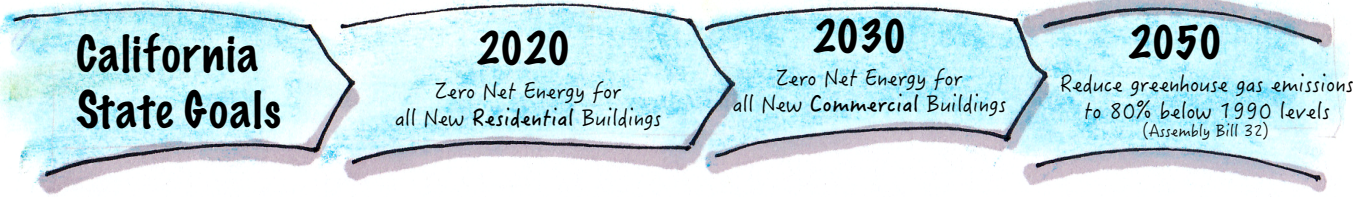
- Prepare a cost-effectiveness study
- Study and adopt a Zero Net Energy Ordinance for all types of smaller commercial buildings to be effective in 2023

6

2023-26

Adopt a Commercial Zero Net Energy Ordinance for Larger Buildings

- Prepare a cost-effectiveness study
- Study and adopt a Zero Net Energy Ordinance for all types of larger commercial buildings to be effective in 2026



California State Goals

2020

Zero Net Energy for all New Residential Buildings

2030

Zero Net Energy for all New Commercial Buildings

2050

Reduce greenhouse gas emissions to 80% below 1990 levels (Assembly Bill 32)



CITY OF
PALO ALTO

Development Services 2015